

3. Driver Installation

Introduction

There are motherboard drivers and utilities included in ACORP Bonus CD disc. You don't need to install all of them in order to boot your system. But after you finish the hardware installation, you have to install your operation system first (such as windows 98) before you can install any drivers or utilities. Please refer to your operation system installation guide.

Note: Please follow recommended procedure to install Windows 95 and Windows 98.

3.1 Auto-run Menu

You can use the auto-run menu of Bonus CD disc.
Choose the utility and driver and select model name.

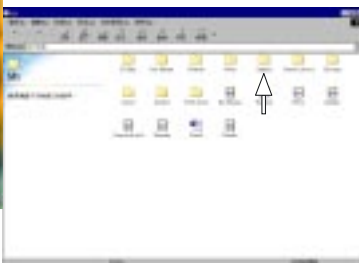


3.2 Installing Intel INF Driver

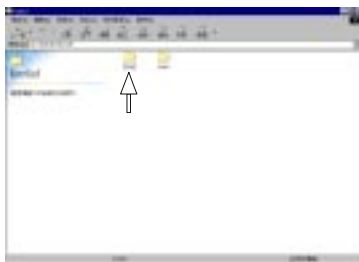
You can install the Intel inf driver (IDE Bus master (For Windows NT use), Intel ATAPI Vendor Support Driver, Intel AGP, IRQ Routing Driver (For Windows 98 use), Intel Registry (INF) Driver) from the Bonus Pack CD disc auto-run menu.



(1)
Click "Intel Driver" Item.



(2)
Click "Intelinf" Item.
(For Windows NT no Support)



(3)
Click "Disk1" Item.



(4)
Click "Setup".



(5)
Click "Next".

3.3 Installing Ultra ATA Driver

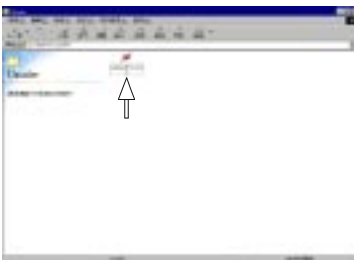
It is necessary to install Bus Master IDE drive to support ATA hard disk. You can find the Ultra ATA driver from the Bonus Pack CD disc auto-run menu.



(1)
Click "Intel Driver" Item.



(2)
Click "Uatadrv" Item.



(3)
Click "intelata603_multi".

Note: Installing this Bus Master IDE driver may cause Suspend to Hard Drive failure.

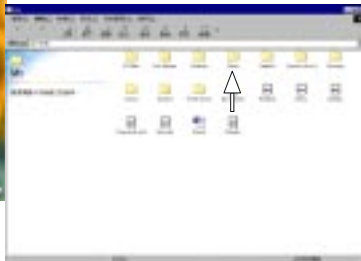
3.4 Installing Hardware Monitoring Utility

You can install Hardware Monitoring Utility to monitor CPU temperature, fans and system voltage. The hardware monitoring function is automatically implemented by the BIOS and utility software. No hardware installation is needed.



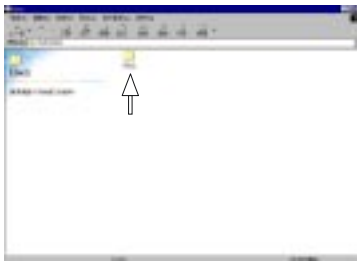
(1)

Click "Intel Driver" Item.



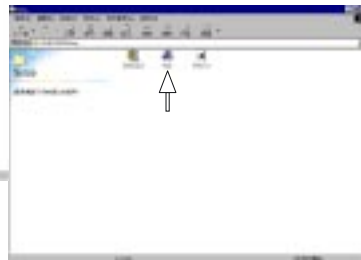
(2)

Click "HWM" Item.



(3)

Click "Setup" Item.



(4)

Click "Setup".

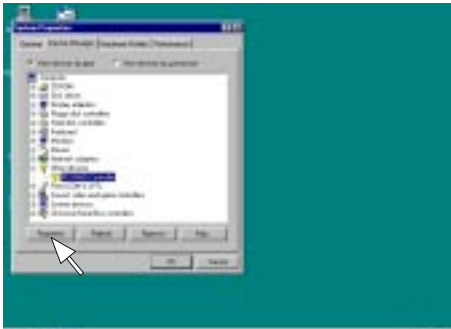


(5)

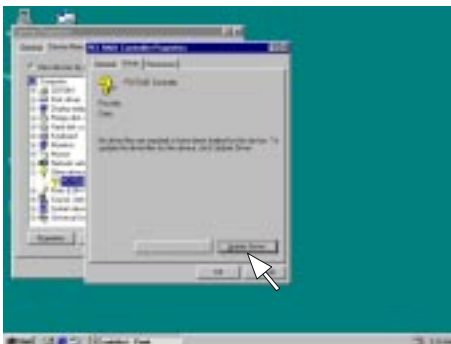
Click "OK".

3.5 Installing Onboard IDE RAID Driver

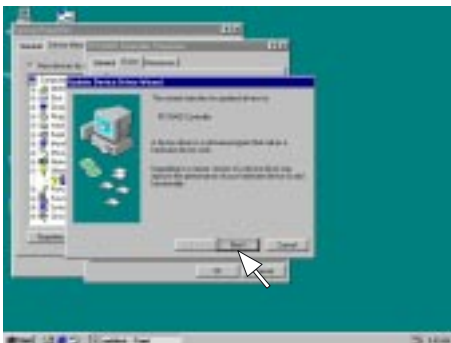
The onboard PROMISE FastTrak 100 Lite chipset provides DOS, Windows 98/98 SE/ME/NT/2000 driver for install. You can find the Onboard IDE RAID driver from the Bonus Pack CD disc auto-run menu.



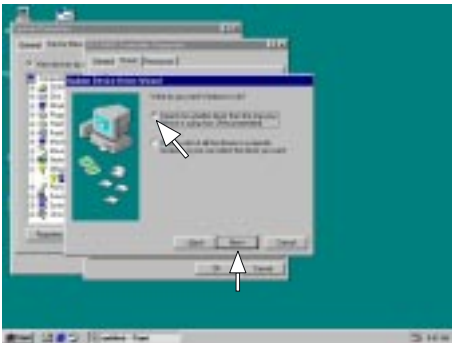
(1)
Click "Properties"
Item.



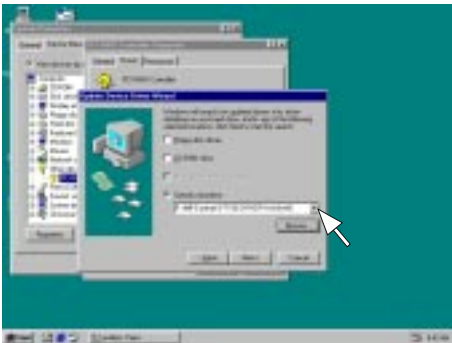
(2)
Click "Update
Driver" Item.



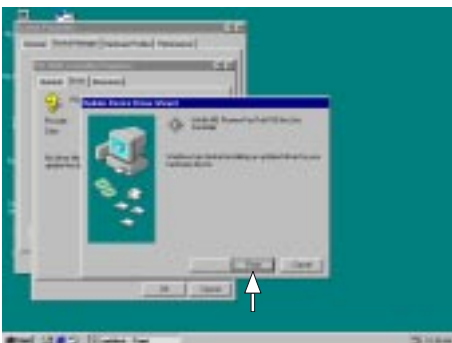
(3)
Click "Next" Item.



(4)
Click "Next" Item.



(5)
**Selection your system
environment follow
path :\\MB\\fasttrak\\
then
Click "Next" Item.**

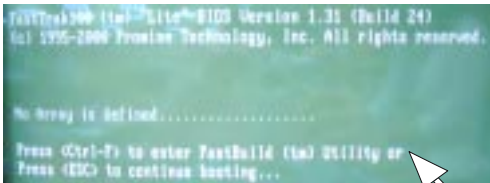


(6)
Click "finish" Item.

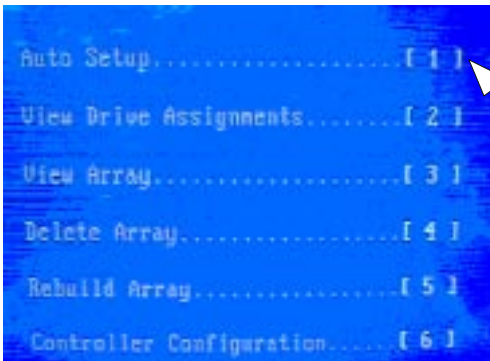
3.6 Installing Win2000 RAID Driver

How to install Win2000 RAID driver, please follow the procedure below to set up RAID driver.

1. Boot your system. If this is the first time you boot the Promise onboard BIOS, it will display the following screen.



2. Press <Ctrl-F> keys to display the FastBuild (tm) Utility Main Menu.
3. Press "1" to display Auto Setup Menu below. This is the fastest and easiest method to create your IDE RAID.

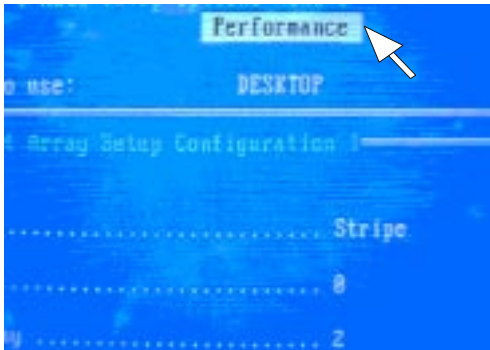


Creating Arrays Automatically

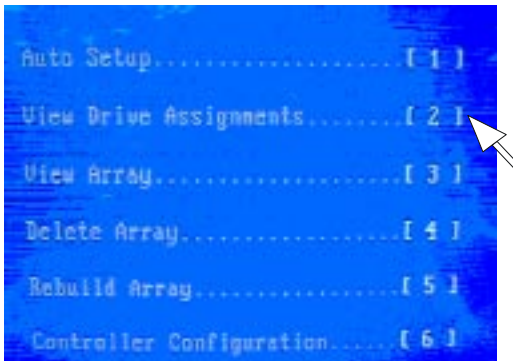
The Auto Setup <1> selection from the Main Menu can intuitively help create your disk array. It will assign all available drives appropriate for the disk array you are creating. After setting, use Ctrl-Y to Save selections. FastBuild will automatically build the array.

Optimize Array For

Select which you want, performance (RAID 0) or security (RAID 1) under the "Optimize Array For".



4. Press "2" to display View Drive Assignments Menu below.



View Drive Assignments

The View Drive Assignments <2> option in the Main displays which drives are assigned to a disk arrays or are unassigned.

Technology, Inc.

ts 1

Capacity (MB)	Assignment	Mode
19892	Array 1	H5
28629	Array 1	H5

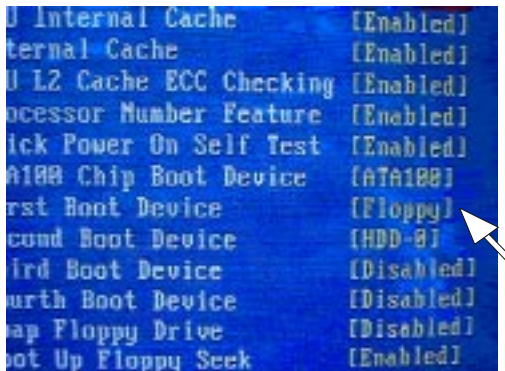
5. Press "3" to display View Array Menu below.

Auto Setup.....	[1]
View Drive Assignments.....	[2]
View Array.....	[3]
Delete Array.....	[4]
Rebuild Array.....	[5]
Controller Configuration.....	[6]

6. Then you will find the display below, if you select "performance" (RAID 0).

Array No	RAID Mode	Total Dv
Array 1	Stripe	2
Array 2	----	----
Array 3	----	----
Array 4	----	----

7. Save & reboot, then go into the BIOS setting to select the first boot device "Floppy" from "Advanced BIOS features" as follow.

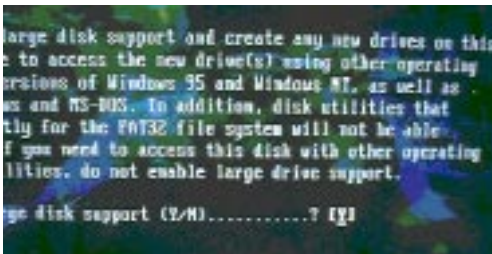


8. After reboot the system by bootable disk, modifying the "CONFIG.SYS" of the bootable disk as below and save it.

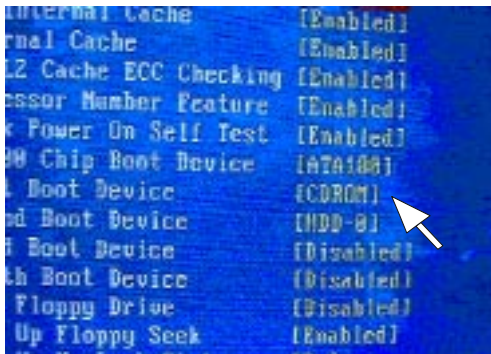
[CD]

```
device=himem.sys /testmem:off
device=oakcdrom.sys /D:mscd001
device=btdosm.sys
device=flashpt.sys
device=btcdrom.sys /D:mscd001
device=aspi2dos.sys
device=aspi8dos.sys
device=aspi4dos.sys
device=aspi8u2.sys
device=aspicd.sys /D:mscd001
DEVICE=FASTTRACK.SYS
```

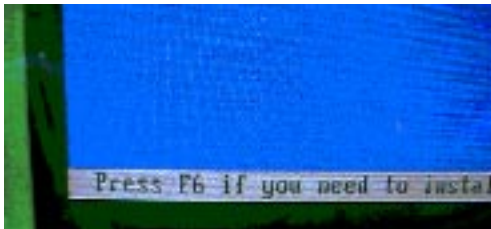
9. On the other hand, copying the files of "MB\FASTTRACK\FT100 DRIVER\TXTSETUP.OEM & FASTTRACK as well as the folder of "Win2000" from the attached CD to the other FDD.
10. Using the modified disk to boot the PC.
11. Running FDISK.



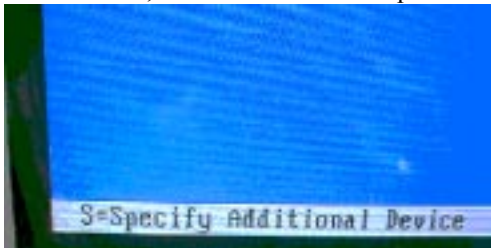
12. Separating and allocating the required volume of disk, and reboot the system then Format C:.
13. After that restart the system and set the CMOS from "Advanced BIOS features" as following chart.



14. Input the Win2000 CD in CD Drive and boot the system from CD-ROM. Also, put the FDD that include the "FastTrack" & "TXTSETUP" files and "WIN2000" folder, then press F6 button as soon as the following message appeared.



15. After that, continue to install OS procedures.



16. Press "S".



17. Selecting "Win2000 Promise..." then go back to install Win2000 continuously.