

## 4. BIOS CONFIGURATION

Award's BIOS ROM has a built-in Setup program that allows users to modify the basic system configuration. This type of information is stored in battery-backed CMOS SRAM so that it retains the Setup information when the power is turned off.

### 4.1. ENTERING SETUP

Power ON the computer and press <Del> immediately will allow you to enter Setup. If the message disappears before you respond and you still wish to enter Setup, restart the system to try again by turning it OFF then ON or pressing the "RESET" bottom on the system case. You may also restart by simultaneously press <Ctrl>, <Alt>, and <Del> keys.

### 4.2. CONTROL KEYS

Up arrow	Move to previous item
Down arrow	Move to next item
Left arrow	Move to the item in the left hand
Right arrow	Move to the item in the right hand
Esc key	Main Menu - Quit and not save changes into CMOS Status Page Setup Menu and Option Page Setup Menu - Exit current page and return to Main Menu
PgUp key	Increase the numeric value or make changes
PgDn key	Decrease the numeric value or make changes
F1 key	General help, only for Status Page Setup Menu and Option Page Setup Menu
F2 key	Reserved
F3 key	Reserved
F4 key	Reserved
F5 key	Restore the previous CMOS value from CMOS, only for Option Page Setup Menu
F6 key	Load the default CMOS value from Fail-Saft default table, only for Option Page Setup Menu
F7 key	Load Optimized defaults
F8 key	Reserved
F9 key	Reserved
F10 key	Save all the CMOS changes and exit

### 4.3. GETTING HELP

#### 4.3.1. Main Menu

The on-line description of the highlighted setup function is displayed at the bottom of the screen.

#### 4.3.2. Status Page Setup Menu / Option Page Setup Menu

Press F1 to pop up a small help window that describes the appropriate keys to use and the possible selections for the highlighted item. To exit the Help Window press <Esc>.

### 4.4. THE MAIN MENU

Once you enter Award BIOS CMOS Setup Utility, the Main Menu (Figure 4.1) will appear on the screen. The Main Menu allows you to select from nine setup functions and two exit choices. Use arrow keys to select among the items and press <Enter> to accept or enter the sub-menu.

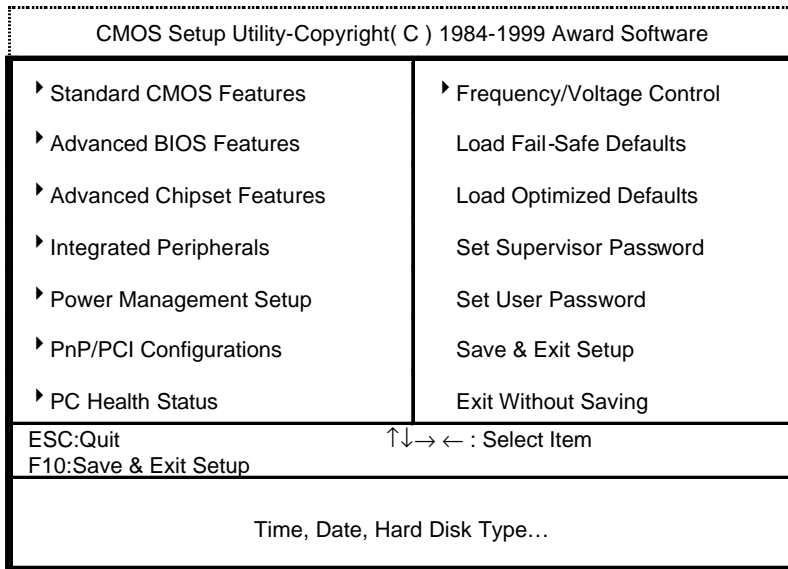


Figure 4.1: Main Menu

- Standard CMOS Features  
This setup page includes all the items in standard compatible BIOS.
- Advanced BIOS Features  
This setup page includes all the items of Award special enhanced features.
- Advanced Chipset Features  
This setup page includes all the items of chipset special features.
- Integrated Peripherals  
This setup page includes all onboard peripherals.
- Power Management Setup  
This setup page includes all the items of Green function features.
- PnP/PCI Configurations  
This setup page includes all the configurations of PCI & PnP ISA resources.
- PC Health Status  
This setup page is the System auto detect Temperature, voltage , fan, speed.
- Frequency/Voltage Control  
This setup page is control CPU' s clock and frequency ratio.
- Load Fail-Safe Defaults  
Fail-Safe Defaults indicates the value of the system parameters which the system would be in safe configuration.
- Load Optimized Defaults  
Optimized Defaults indicates the value of the system parameters which the system would be in best performance configuration.

- Set Supervisor password  
Change, set, or disable password. It allows you to limit access to the system and Setup, or just to Setup.
- Set User password  
Change, set, or disable password. It allows you to limit access to the system.
- Save & Exit Setup  
Save CMOS value settings to CMOS and exit setup.
- Exit Without Saving  
Abandon all CMOS value changes and exit setup.

#### 4.5. STANDARD CMOS FEATURES MENU

The items in Standard CMOS Setup Menu (Figure 4.2) are divided into 9 categories. Each category includes no, one or more than one setup items. Use the arrows to highlight the item and then use the <PgUp> or <PgDn> keys to select the value you want in each item.

CMOS Setup Utility-Copyright( C ) 1984-1999 Award Software Standard CMOS Features		
Date (mm:dd:yy)	Mon , Mar 27 2000	Item Help
Time (hh:mm:ss)	2 : 31 : 24	Menu Level ▶
▶ IDE Primary Master	Press Enter None	Change the Day, month, Year and century
▶ IDE Primary Slave	Press Enter None	
▶ IDE Secondary Master	Press Enter None	
▶ IDE Secondary Slave	Press Enter None	
Drive A	1.44M, 3.5 in.	
Drive B	None	
Floppy 3 Mode Support	Disabled	
Video	EGA / VGA	
Halt On	All, But Keyboard	
Base Memory	640K	
Extended Memory	129024K	
Total Memory	130048K	

↑↓→ ← Move Enter:Select +/-/PU/PD:Value F10:Save ESC:Exit F1:General Help  
F5:Previous Values F6:Fail-Safe Defaults F7:Optimized Defaults

Figure 4.2: Standard CMOS Features

- Date

The date format is <week>, <month> <day> <year>.

week	The week, from Sun to Sat, determined by the BIOS and is display-only
month	The month, Jan. Through Dec.
day	The day, from 1 to 31 (or the maximum allowed in the month)
year	The year, from 1994 through 2079

- Time

The times format in <hour> <minute> <second>. The time is calculated base on the 24-hour military-time clock. For example, 1 p.m. is 13:00:00.

- IDE Primary Master, Slave / Secondary Master, Slave

The category identifies the types of hard disk from drive C to F that has been installed in the computer. There are three types: auto type, manual definable type and none type user type is user-definable; Auto type which will automatically detect HDD type.

Note that the specifications of your drive must match with the drive table. The hard disk will not work properly if you enter improper information for this category.

If you select Manual type, related information will be asked to enter to the following items. Enter the information directly from the keyboard and press <Enter>. Such information should be provided in the documentation form your hard disk vendor or the system manufacturer.

CYLS.	Number of cylinders
HEADS	number of heads
PRECOMP	write precomp
LANDZONE	Landing zone
SECTORS	number of sectors

If a hard disk has not been installed select NONE and press <Enter>.

- Drive A type / Drive B type

The category identifies the types of floppy disk drive A or drive B that has been installed in the computer.

None	No floppy drive installed
360K, 5.25 in.	5.25 inch PC-type standard drive; 360K byte capacity.
1.2M, 5.25 in.	5.25 inch AT-type high-density drive; 1.2M byte capacity (3.5 inch when 3 Mode is Enabled).
720K, 3.5 in.	3.5 inch double-sided drive; 720K byte capacity
1.44M, 3.5 in.	3.5 inch double-sided drive; 1.44M byte capacity.
2.88M, 3.5 in.	3.5 inch double-sided drive ; 2.88M byte capacity.

- Floppy3 Mode Support (for Japan Area)

Disabled	Normal Floppy Drive.
Drive A	Drive A is 3 mode Floppy Drive.
Drive B	Drive B is 3 mode Floppy Drive.
Both	Drive A & B are 3 mode Floppy Drives.

- Video

The category detects the type of adapter used for the primary system monitor that must match your video display card and monitor. Although secondary monitors are supported, you do not have to select the type in setup.

EGA/VGA	Enhanced Graphics Adapter/Video Graphics Array. For EGA, VGA, SVGA, or PGA monitor adapters
CGA 40	Color Graphics Adapter, power up in 40 column mode
CGA 80	Color Graphics Adapter, power up in 80 column mode
MONO	Monochrome adapter, includes high resolution monochrome adapters

- Halt on

The category determines whether the computer will stop if an error is detected during power up.

NO Errors	The system boot will not stop for any error that may be detected and you will be prompted
All Errors	Whenever the BIOS detects a non-fatal error the system will be stopped
All, But Keyboard	The system boot will not stop for a keyboard error; it will stop for all other errors
All, But Diskette	The system boot will not stop for a disk error; it will stop for all other errors
All, But Disk/Key	The system boot will not stop for a keyboard or disk error; it will stop for all other errors

- Memory

The category is display-only which is determined by POST (Power On Self Test) of the BIOS.

**Base Memory**

The POST of the BIOS will determine the amount of base (or conventional) memory installed in the system.

The value of the base memory is typically 512 K for systems with 512 K memory installed on the motherboard, or 640 K for systems with 640 K or more memory installed on the motherboard.

**Extended Memory**

The BIOS determines how much extended memory is present during the POST.

This is the amount of memory located above 1 MB in the CPU's memory address map.



### 4.6. Advanced BIOS Features

CMOS Setup Utility-Copyright( C ) 1984-1999 Award Software Advanced BIOS Features		
Virus Warning	Disabled	Item Help
First Boot Device	Floppy	Menu Level ▸
Second Boot Device	HDD-0	Allows you to
Third Boot Device	LS/ZIP	choose the VIRUS
Boot Up Floppy Seek	Enabled	Warning feature
Boot Up NumLock Status	ON	For IDE Hard disk
Typematic Rate Setting	Disabled	Boot sector
Typematic Rate (Chars/Sec)	6	Protection. If this
Typematic Delay (Msec)	250	Function is enable
Security Option	Setup	And someone
HDD S.M.A.R.T. Capability	Disabled	Attempt to write
Report No FDD For WIN 95	No	Data into this area
		, BIOS will show
		A warning
		Message on
		Screen and alarm
		beep

↑↓→ ← Move Enter:Select +/-/PU/PD:Value F10:Save ESC:Exit F1:General Help  
F5:Previous Values F6:Fail-Safe Defaults F7:Optimized Defaults

Figure 4.3: Advanced BIOS Features

- Virus Warning

If it is set to enable, the category will flash on the screen when there is any attempt to write to the boot sector or partition table of the hard disk drive. The system will halt and the following error message will appear in the mean time. You can run anti-virus program to locate the problem.

Default value is Disabled.

Enabled	Activate automatically when the system boots up causing a warning message to appear when anything attempts to access the boot sector or hard disk partition table
Disabled	No warning message to appear when anything attempts to access the boot sector or hard disk partition table

- First / Second / Third Boot device

The default value is Floppy / HDD-0 / LS/ZIP.

Floppy	Select your boot device priority by Floppy
LS/ZIP	Select your boot device priority by LS/ZIP
HDD-0~3	Select your boot device priority by HDD-0~3
SCSI	Select your boot device priority by SCSI
CDROM	Select your boot device priority by CDROM
Disable	Disable this function
LAN	Select your boot device priority by LAN

- Boot Up Floppy Seek

During POST, BIOS will determine the floppy disk drive installed is 40 or 80 tracks. 360 K type is 40 tracks 720 K, 1.2 M and 1.44 M are all 80 tracks. The default value is Enabled.

Enabled	BIOS searches for floppy disk drive to determine it is 40 or 80 tracks. Note that BIOS can not tell from 720 K, 1.2 M or 1.44 M drive type as they are all 80 tracks
Disabled	BIOS will not search for the type of floppy disk drive by track number. Note that there will not be any warning message if the drive installed is 360 K

- Boot Up NumLock Status

The default value is On.

On	Keypad is number keys.
Off	Keypad is arrow keys.

- Typematic Rate Setting

The default value is Disabled.

Enabled	Enable Keyboard Typematic rate setting.
Disabled	Disable Keyboard Typematic rate setting.

- Typematic Rate (Chars / Sec.)

The default value is 6.

6-30	Set the maximum Typematic rate from 6 chars. Per second to 30 characters. Per second.
------	---

- Typematic Delay (Msec.)

The default value is 250.

250-1000	Set the time delay from first key to repeat the same key in to computer.
----------	--

- Security Option

This category allows you to limit access to the system and Setup, or just to Setup. The default value is Setup.

System	The system can not boot and can not access to Setup page will be denied if the correct password is not entered at the prompt
Setup	The system will boot, but access to Setup will be denied if the correct password is not entered at the prompt

- HDD S.M.A.R.T. Capability

The default value is Disable.

Enable	Enable HDD S.M.A.R.T. Capability
Disable	Disable HDD S.M.A.R.T. Capability

- Report No FDD For WIN 95

The default value is No.

No	Assign IRQ6 For FDD.
Yes	FDD Detect IRQ6 Automatically.

### 4.7. Advanced Chipset Features

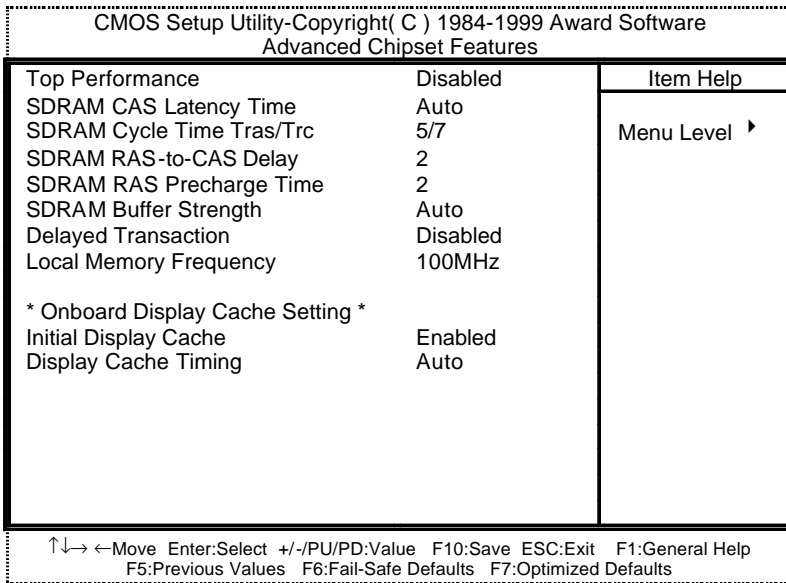


Figure 4.4: Advanced Chipset Features

- Top Performance

The default value is Disabled.

Disabled	Disabled Top Performance Function.
Enabled	Enabled Top Performance Function.

- SDRAM CAS latency Time

The default value is Auto

3	For 67 / 83 MHz SDRAM DIMM module.
2	For 100 MHz SDRAM DIMM module.
Auto	Set SDRAM CAS latency Time to Auto

- SDRAM Cycle Time Tras/Trc

The default value is 5/7

6/8	Set DRAM Tras/Trc Cycle time is 6/8 SCLKs.
5/7	Set DRAM Tras/Trc Cycle time is 5/7 SCLKs.

- SDRAM RAS to CAS Delay

The default value is 2

3	Set SDRAM RAS# to CAS# delay 3 SCLKs.
2	Set SDRAM RAS# to CAS# delay 2 SCLKs.

- SDRAM RAS Precharge Time

The default value is 2.

3	Set SDRAM RAS# Precharge is 3.
2	Set SDRAM RAS# Precharge is 2.

- SDRAM Buffer Strength

The default value is Auto

Auto	Auto detect SDRAM buffer strength. <b>(Default Value)</b> .
Auto-1	Decrease SDRAM buffer strength.
Auto+1	Increase SDRAM buffer strength.

- Delayed Transaction

The default value is Disabled.

Disabled	Normal operation.
Enabled	For slow speed ISA device in system.

- Local Memory Frequency

The default value is 100MHz.

100MHz	Set Display Cache used 100MHz.
133MHz	Set Display Cache used 133MHz.

**\*Note: The “Local Memory Frequency 133MHz” function is only available when motherboard use GMCH 82810E chipset.**

- Initialize Display Cache

The default value is Enabled.

Disabled	Disabled Initialize Display Cache.
Enabled	Enabled Initialize Display Cache.

- Display Cache Timing

The default value is Auto.

Fast	Set Display Cache Timing to Fast.
Auto	Set Display Cache Timing to Auto.
Normal	Set Display Cache Timing to Normal.

### 4.8. Integrated Peripherals

CMOS Setup Utility-Copyright( C ) 1984-1999 Award Software		
Integrated Peripherals		
		Item Help
On-Chip Primary PCI IDE	Enabled	
On-Chip Secondary PCI IDE	Enabled	
IDE Primary Master PIO	Auto	Menu Level ▶
IDE Primary Slave PIO	Auto	
IDE Secondary Master PIO	Auto	
IDE Secondary Slave PIO	Auto	
IDE Primary Master UDMA	Auto	
IDE Primary Slave UDMA	Auto	
IDE Secondary Master UDMA	Auto	
IDE Secondary Slave UDMA	Auto	
USB Controller	Enabled	
USB Keyboard Support	Disabled	
Init Display First	PCI Slot	
AC97 Audio	Auto	
AC97 Modem	Auto	
IDE HDD Block Mode	Enabled	
POWER ON Function	BUTTON ONLY	
<b>*KB Power ON Password</b>	<b>Enter</b>	
Onboard FDC Controller	Enabled	
Onboard Serial Port 1	Auto	
Onboard Serial Port 2	Auto	
UART Mode Select	Normal	
<b>*RxD, TxD Active</b>	<b>Hi,Lo</b>	
<b>*IR Transmittiion delay</b>	<b>Enabled</b>	
Onboard Parallel Port	378/IRQ7	
Parallel Port Mode	SPP	
<b>*EPP Mode Select</b>	<b>EPP1.7</b>	
Game Port Address	201	
Midi Port Address	330	
<b>*Midi Port IRQ</b>	<b>10</b>	

↑↓←→ Move Enter:Select +/-/PU/PD:Value F10:Save ESC:Exit F1:General Help  
 F5:Previous Values F6:Fail-Safe Defaults F7:Optimized Defaults

Figure 4.5: Integrated Peripherals

- On-Chip Primary PCI IDE

The default value is Enabled.

Enabled	Enable onboard 1st channel IDE port.
Disabled	Disable onboard 1st channel IDE port.

- On-Chip Secondary PCI IDE

The default value is Enabled.

Enabled	Enable onboard 2nd channel IDE port.
Disabled	Disable onboard 2nd channel IDE port.

- IDE Primary Master PIO (for onboard IDE 1st channel).

The default value is Auto.

Auto	BIOS will automatically detect the IDE HDD Accessing mode.
Mode0~4	Manually set the IDE Accessing mode.

- IDE Primary Slave PIO (for onboard IDE 1st channel).

The default value is Auto.

Auto	BIOS will automatically detect the IDE HDD Accessing mode.
Mode0~4	Manually set the IDE Accessing mode.

- IDE Secondary Master PIO (for onboard IDE 2nd channel).

The default value is Auto.

Auto	BIOS will automatically detect the IDE HDD Accessing mode.
Mode0~4	Manually set the IDE Accessing mode.



- IDE Secondary Slave PIO (for onboard IDE 2nd channel).

The default value is Auto.

Auto	BIOS will automatically detect the IDE HDD Accessing mode.
Mode0~4	Manually set the IDE Accessing mode.

- IDE Primary Master UDMA.

The default value is Auto.

Auto	BIOS will automatically detect the IDE HDD Accessing mode.
Disabled	Disable UDMA function.

- IDE Primary Slave UDMA.

The default value is Auto.

Auto	BIOS will automatically detect the IDE HDD Accessing mode.
Disabled	Disable UDMA function.

- IDE Secondary Master UDMA.

The default value is Auto.

Auto	BIOS will automatically detect the IDE HDD Accessing mode.
Disabled	Disable UDMA function.

- IDE Secondary Slave UDMA.

The default value is Auto.

Auto	BIOS will automatically detect the IDE HDD Accessing mode.
Disabled	Disable UDMA function.

- USB Controller

The default value is Enabled.

Enabled	Enable USB Controller.
Disabled	Disable USB Controller.

- USB Keyboard Support

The default value is Disabled.

Enabled	Enable USB Keyboard Support.
Disabled	Disable USB Keyboard Support.

- Init Display First

The default value is PCI Slot.

PCI Slot	Set Init Display First to PCI Slot.
Onboard	Set Init Display First to Onboard AGP.

- AC97 Audio

The default value is Auto.

Enabled	Enabled AC' 97 Audio.
Auto	BIOS will automatically detect the AC' 97 Audio.
Disabled	Disabled AC' 97 Audio.

- AC97 Modem

The default value is Auto.

Enabled	Enabled AC' 97 Modem.
Auto	BIOS will automatically detect the AC' 97 Modem.
Disabled	Disabled AC' 97 Modem.

- IDE HDD Block Mode

The default value is Enabled.

Enabled	Enable IDE HDD Block Mode
Disabled	Disable IDE HDD Block Mode

- POWER ON Function (Optional)

The default value is BUTTON ONLY.

Password	Enter from 1 to 5 characters to set the Keyboard Power On Password.
Mouse Left	Double click twice on PS/2 left bottom.
Mouse Right	Double click twice on PS/2 right bottom.
BUTTON ONLY	If your keyboard have "POWER Key" button, you can press the key to power on your system.
Keyboard 98	Windows 98 keyboard "Power" key.

- Onboard FDC Controller

The default value is Enabled.

Enabled	Enable onboard FDC port.
Disabled	Disable onboard FDC port.

- Onboard Serial Port 1

The default value is Auto.

Auto	BIOS will automatically setup the port 1 address.
3F8/IRQ4	Enable onboard Serial port 1 and address is 3F8.
2F8/IRQ3	Enable onboard Serial port 1 and address is 2F8.
3E8/IRQ4	Enable onboard Serial port 1 and address is 3E8.
2E8/IRQ3	Enable onboard Serial port 1 and address is 2E8.
Disabled	Disable onboard Serial port 1.

- Onboard Serial Port 2

The default value is Auto.

Auto	BIOS will automatically setup the port 2 address.
3F8/IRQ4	Enable onboard Serial port 2 and address is 3F8.
2F8/IRQ3	Enable onboard Serial port 2 and address is 2F8.
3E8/IRQ4	Enable onboard Serial port 2 and address is 3E8.
2E8/IRQ3	Enable onboard Serial port 2 and address is 2E8.
Disabled	Disable onboard Serial port 2.

- UART Mode Select

(This item allows you to determine which Infra Red(IR) function of Onboard I/O chip)

The default value is Normal

ASKIR	Onboard I/O chip supports ASKIR.
IrDA	Onboard I/O chip supports IrDA.
Normal	Onboard I/O chip supports Normal.

- RxD , TxD Active

The default value is Hi,Lo.

Hi, Hi	RxD set Hi, TxD set Hi
Hi, Lo	RxD set Hi, TxD set Lo
Lo, Hi	RxD set Lo,TxD set Hi
Lo, Lo	RxD set Lo,TxD set Lo

- IR Transmittiion delay

The default value Enabled.

Enabled	Set IR Transmittiion delay Enabled
Disabled	Set IR Transmittiion delay Disabled

- Onboard Parallel Port

The default value is 378/IRQ7.

378/IRQ7	Enable onboard LPT port and address is 378/IRQ7.
278/IRQ5	Enable onboard LPT port and address is 278/IRQ5.
Disabled	Disable onboard LPT port.
3BC/IRQ7	Enable onboard LPT port and address is 3BC/IRQ7.

- Parallel Port Mode

The default value is SPP.

SPP	Using Parallel port as Standard Printer Port.
EPP	Using Parallel port as Enhanced Parallel Port.
ECP	Using Parallel port as Extended Capabilities Port.
ECP+EPP	Using Parallel port as ECP & EPP mode.

- EPP Mode Select

The default value is EPP 1.7.

EPP 1.9	EPP Version is 1.9.
EPP 1.7	EPP Version is 1.7.

- Game Port Address

The default value is 201.

Disabled	Disabled On Board IDE
201	Set onboard game port is 201.
209	Set onboard game port is 209.

- Midi Port Address

The default value is 330.

Disabled	Disabled On Board Midi Port.
300	Set On Board Midi Port is 300.
330	Set On Board Midi Port is 330.

- Midi Port IRQ

The default value is 10.

5	Set 5 for Midi Port IRQ
10	Set 10 for Midi Port IRQ

### 4.9. POWER MANAGEMENT SETUP

CMOS Setup Utility-Copyright( C ) 1984-1999 Award Software Power Management Setup		
ACPI Suspend Type	S1(PowerOn Suspend)	Item Help
Video Off Method	DPMS	
Video Off In Suspend	Yes	Menu Level ▶
Suspend Type	Stop Grant	
MODEM Use IRQ	4	
Suspend Mode	Disabled	
HDD Power Down	Disabled	
Soft-Off by PWR-BTTN	Instant-off	
Power LED in Suspend	Blinking	
AC BACK Function	Memory	
Wake-Up by PCI card	Enabled	
ModemRingOn/WakeOnLan	Enabled	
FAN Off In Suspend	Enabled	
USB KB/Mouse Wake From S3	Disabled	
CPU Thermal-Throttling	50%	
Resume by Alarm	Disabled	
* Date(of Month) Alarm	0	
* Time(hh:mm:ss) Alarm	0 0 0	
** Reload Global Timer Events **		
Primary IDE 0	Disabled	
Primary IDE 1	Disabled	
Secondary IDE 0	Disabled	
Secondary IDE 1	Disabled	
FDD,COM,LPT Port	Enabled	
PCI PIRQ[A-D]#	Enabled	

↑↓→ ← Move Enter:Select +/-/PU/PD:Value F10:Save ESC:Exit F1:General Help  
F5:Previous Values F6:Fail-Safe Defaults F7:Optimized Defaults

Figure 4.6: Power Management Setup

- ACPI Suspend Type

The default value is S1 (PowerOn Suspend).

S1(PowerOn Suspend)	Set ACPI Suspend type is S1.
S3(Suspend to RAM)	Set ACPI Suspend type is S3.

- Video off Method

The default value is DPMS.

V/H SYNC+Blank	BIOS will turn off V/H-SYNC when gets into Green mode for Green monitor power saving.
Blank Screen	BIOS will only black monitor when gets into Green mode.
DPMS	BIOS will use DPMS Standard to control VGA card. (The Green type VGA card will turn off V/H-SYNC automatically.)

- Video Off In Suspend

The default value is Yes.

Yes	Enabled video off in suspend.
No	Disabled video off in suspend.

- Suspend Type

The default value is Stop Grant.

Stop Grant	Set Suspend type is stop grant.
PwrOn Suspend	Set Suspend type is Power on suspend.

- MODEM Use IRQ

The default value is 4.

NA	Set MODEM Use IRQ to NA.
3	Set MODEM Use IRQ to 3.
4	Set MODEM Use IRQ to 4.
5	Set MODEM Use IRQ to 5.
7	Set MODEM Use IRQ to 7.
9	Set MODEM Use IRQ to 9.
10	Set MODEM Use IRQ to 10.
11	Set MODEM Use IRQ to 11.

- Suspend Mode

The default value is Disable.

Disabled	Disable Suspend Mode.
1 Min - 1 Hour	Setup the timer to enter Suspend Mode.

- HDD Power Down

The default value is Disable.

Disable	Disable HDD Power Down mode function.
1-15 Mns.	Enable HDD Power Down mode between 1 to 15 mins.

- Soft-off by PWR -BTTN

The default value is Instant-off.

Instant-off	Soft switch ON/OFF for POWER ON/OFF
Delay 4 Sec.	Soft switch ON 4sec. for POWER OFF.

- Power LED in Suspend

The default value is BLINKING.

Blinking	Set Power LED in Suspend at BLINKING mode.
On	Set Power LED in Suspend at ON mode.
Off/Dual	Set Power LED in Suspend at OFF/DUAL color mode.

- AC Back Function

The default value is Memory.

Memory	This function depends on computer status
Soft-Off	Set System Soft-Off Status.
Full-On	Set System Full-On Status.

- Wake-Up by PCI card

The default value is Enabled.

Disabled	Disabled this function.
Enabled	Enabled wake-up by PCI card.

- ModemRingOn / WakeOnLan

The default value is Enabled.

Disabled	Disable these functions.
Enabled	Enable these functions.



- FAN Off In Suspend

The default value is Enabled.

Disabled	Disable this function.
Enabled	Stop CPU FAN when entering Suspend mode.

- USB KB/Mouse Wake From S3

The default value is Disabled.

Disabled	Disabled USB KB/Mouse Wake From S3 function.
Enabled	Enabled USB KB/Mouse Wake From S3 function

- CPU Thermal-Throttling

The default value is 50%.

87.5%	Monitor CPU Temp. will cause system slow down CPU Duty Cycle to 87.5%.
75.0%	Monitor CPU Temp. will cause system slow down CPU Duty Cycle to 75.0%.
62.5%	Monitor CPU Temp. will cause system slow down CPU Duty Cycle to 62.5%.
50.0%	Monitor CPU Temp. will cause system slow down CPU Duty Cycle to 50.0%.
37.5%	Monitor CPU Temp. will cause system slow down CPU Duty Cycle to 37.5%.
25.0%	Monitor CPU Temp. will cause system slow down CPU Duty Cycle to 25.0%.
12.5%	Monitor CPU Temp. will cause system slow down CPU Duty Cycle to 12.5 %.

- Resume by Alarm

The default value is Disabled.

Disabled	Disable this function.
Enabled	Enable alarm function to POWER ON system.

If the default value is Enabled.

Date ( of Month) Alarm :	0~31
Time ( hh: mm: ss) Alarm :	(0~23) : (0~59) : (0~59)

- Primary IDE 0/1

The default value is Disabled.

Disabled	Disable this function.
Enabled	Enable monitor Primary IDE 0/1 for Green event.

- Secondary IDE 0/1

The default value is Disabled.

Disabled	Disable this function.
Enabled	Enable monitor Secondary IDE 0/1 for Green event.

- FDC/COM/LPT Port

The default value is Enabled.

Disabled	Disable this function.
Enabled	Enable monitor FDC/COM/LPT for Green event.

- PCI PIRQ[A-D] #

The default value is Enabled.

Enabled	Monitor PCI PIRQ[A-D] IRQ Active.
Disabled	Ignore PCI PIRQ[A-D] IRQ Active.

### 4.10. PnP/PCI Configurations

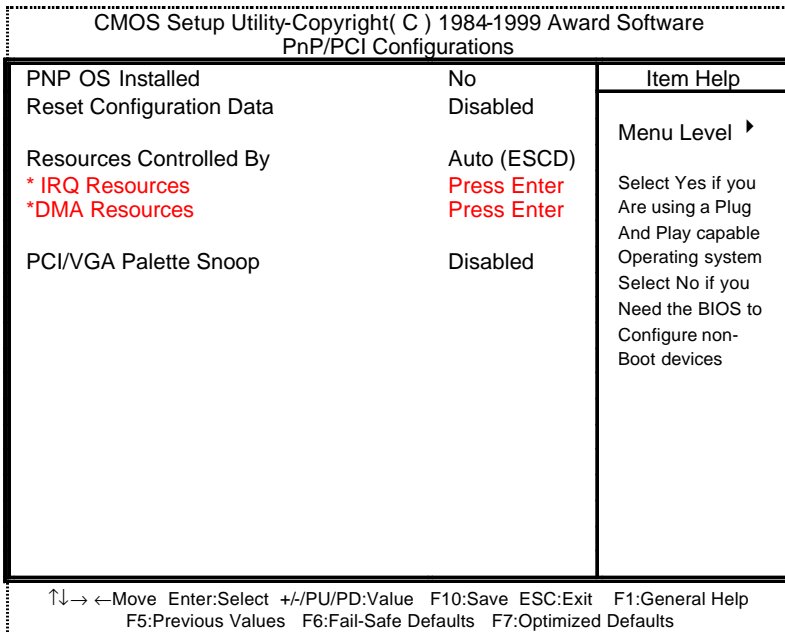


Figure 4.7: PnP/PCI Configuration

- PNP OS Installed

The default value is No.

Yes	Enable PNP OS Installed function.
No	Disable PNP OS Installed function.

- Reset Configuration Data

The default value is Disabled.

Disabled	Disable this function.
ESCD	Enable clear PnP information in ESCD.
DMI	Enable clear PnP information in DMI.
BOTH	Enable clear PnP information in ESCD and DMI.

- Resources Controlled by

The default value is Auto (ESCD)

Manual	User can set the PnP resource (I/O Address, IRQ & DMA channels) used by legacy ISA DEVICE.
Auto(ESCD)	BIOS automatically use these PnP rescuers.

- IRQ (3,4,5,7,9, 10,11,12,14,15),DMA(0,1,3,5,6,7) assigned to

The default value is "Legacy ISA" or "PCI/ISA PnP".

Legacy ISA	The resource is used by Legacy ISA device.
PCI/ISA PnP	The resource is used by PCI/ISA PnP device (PCI or ISA).

- Reserved Memory Base

The default value is N/A.

N/A	Disable the MEM. block using.
C800 ~ DC00	Select the MEM. block starting address.

- PCI/VGA Palette Snoop

The default value is Disabled.

Enabled	For having Video Card on ISA Bus and VGA Card on PCI Bus.
Disabled	For VGA Card only.

### 4.11. PC Health Status

CMOS Setup Utility-Copyright( C ) 1984-1999 Award Software		
PC Health Status		
		Item Help
Reset Case Open Status	Disabled	
Case Opened	No	
Current CPU Temperature	0°C/32°F	Menu Level ▶
CPU FAN Fail Alarm	5487 RPM	
Power FAN Fail Alarm	0 RPM	
System FAN Fail Alarm	0 RPM	
VCORE	2.01 V	
VGTL	1.48 V	
VCC3	3.45 V	
+ 5V	5.02 V	
+12V	12.16 V	
- 12V	-11.70 V	
- 5V	- 5.09 V	
VBAT	3.00 V	
5VSB	5.40 V	
CPU Warning Temperature	70°C/158°F	
Shutdown Temperature	75°C/167°F	
CPU FAN Fail Alarm	Disabled	
Power FAN Fail Alarm	Disabled	
System FAN Fail Alarm	Disabled	

↑↓ → ← Move Enter:Select +/-PU/PD:Value F10:Save ESC:Exit F1:General Help  
 F5:Previous Values F6:Fail-Safe Defaults F7:Optimized Defaults

Figure 4.8: PC Health Status

- Reset Case Open Status
- Case Opened  
 If the case is closed, "Case Opened" will show "No".  
 If the case have been opened, "Case Opened" will show "Yes".  
 If you want to reset "Case Opened" value, set "Reset Case Open Status" to "Enabled" and save CMOS, your computer will restart.
- Current CPU Temperature (°C / °F)  
 Detect CPU Temp. automatically.
- CPU FAN / Power FAN / System FAN Alarm (RPM)  
 Detect Fan speed status automatically.

- Current Voltage (V) VCORE / VGTL/ VCC3 / ±12V / ±5V /VBAT /5VSB

Detect system' s voltage status automatically.

- CPU Warning Temperature (°C / °F)

The default value is 70°C /158°F

65°C / 149°F	Monitor CPU Temp. at 65°C / 149°F
70°C / 158°F	Monitor CPU Temp. at 70°C / 158°F
75°C / 167°F	Monitor CPU Temp. at 75°C / 167°F
Disabled	Disabled this function.

- Shutdown Temp. (°C / °F)

(This function will be effective only for the operating systems that support ACPI Function.)

The default value is 75°C / 167°F

Disabled	Normal Operation
65°C / 149°F	Monitor CPU Temp. at 65°C / 149°F, if Temp. > 65°C / 149°F system will automatically power off .
70°C / 158°F	Monitor CPU Temp. at 70°C / 158°F, if Temp. > 70°C / 158°F system will automatically power off .
75°C / 167°F	Monitor CPU Temp. at 75°C / 167°F, if Temp. > 75°C / 167°F system will automatically power off .

- Fan Fail Alarm

CPU / POWER / SYSTEM

Disabled	Fan Fail Alarm Function Disabled.
Enabled	Fan Fail Alarm Function Enabled.

### 4.12. Frequency/Voltage Control

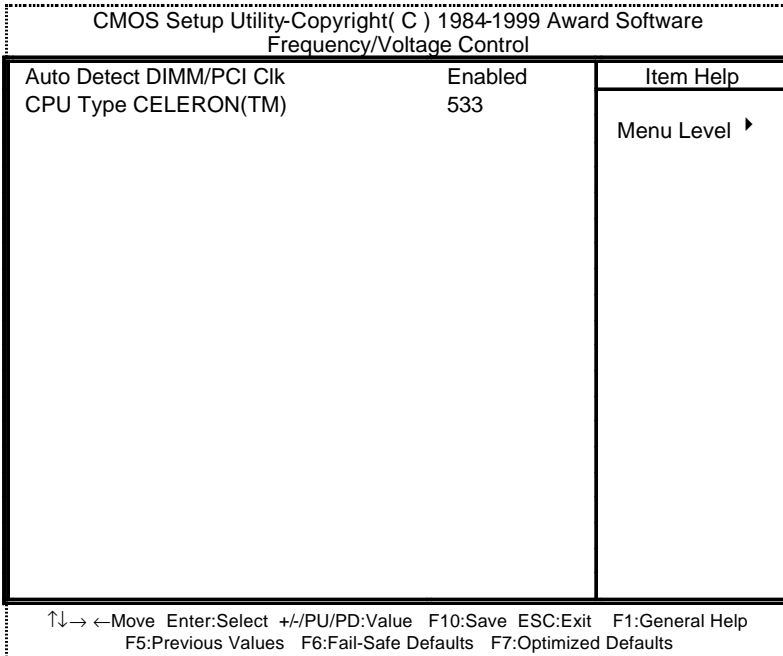


Figure 4.9: Frequency/Voltage Control

- Auto Detect DIMM/PCI Clk

The default value is Enabled.

Disabled	Disabled Auto Detect DIMM/PCI Clk
Enabled	Enabled Auto Detect DIMM/PCI Clk

- CPU Type CELERON(TM)

1. System Bus Speed :66MHz

200 / 233 / 266 / 300 / 333 / 366 / 400 / 433 / 466 / 500 / 533

2. System Bus Speed : 100MHz

300 / 350 / 400 / 450 / 500 / 550 / 600 / 650 / 700 / 750 / 800

3. System Bus Speed : 133MHz

400 / 466 / 533 / 600 / 666 / 733 / 800 / 866 / 933 / 1000 / 1066



### 4.13. Load Fail-Safe Defaults

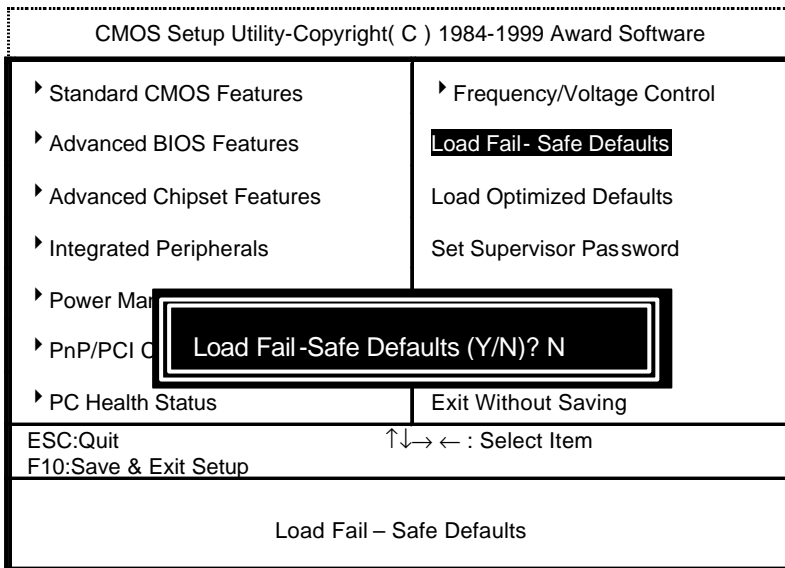


Figure 4.10: Load Fail-Safe Defaults

- Load Fail-Safe Defaults

Fail-Safe defaults contain the most appropriate values of the system parameters that allow minimum system performance.

#### 4.14. Load Optimized Defaults

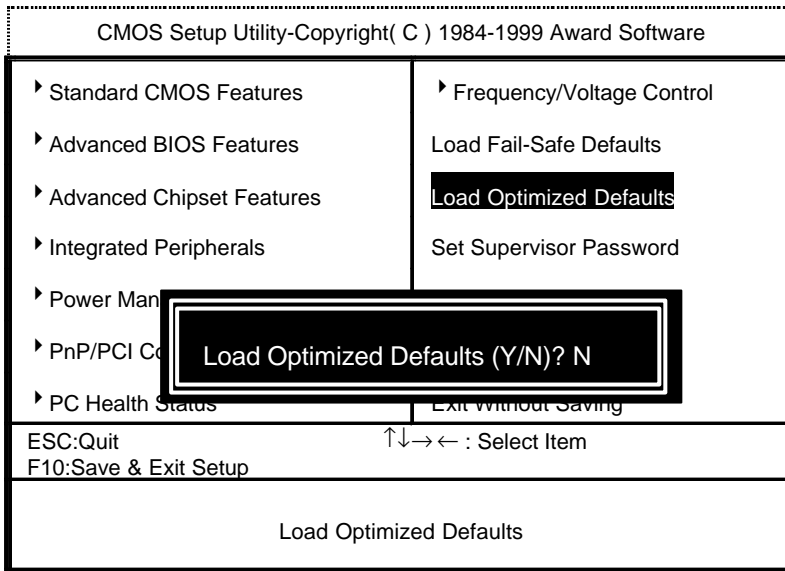


Figure 4.11: Load Optimized Defaults

- Load Optimized Defaults

Selecting this field loads the factory defaults for BIOS and Chipset Features which the system automatically detects.

#### 4.15. Set Supervisor / User Password

When you select this function, the following message will appear at the center of the screen to assist you in creating a password.

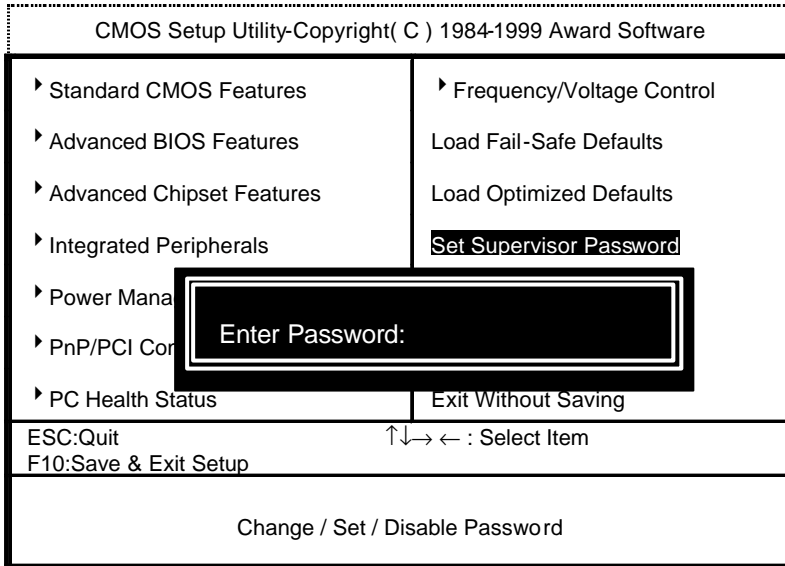


Figure 4.12: Password Setting

Type the password, up to eight characters, and press <Enter>. The password typed now will clear the previously entered password from CMOS memory. You will be asked to confirm the password. Type the password again and press <Enter>. You may also press <Esc> to abort the selection and not enter a password.

To disable password, just press <Enter> when you are prompted to enter password. A message "PASSWORD DISABLED" will appear to confirm the password being disabled. Once the password is disabled, the system will boot and you can enter Setup freely.

If you select "System" at "Security Option" in BIOS Features Setup Menu, you will be prompted for the password every time the system is rebooted or any time you try to enter Setup Menu. If you select "Setup" at "Security Option" in BIOS Features Setup Menu, you will be prompted only when you try to enter Setup.

#### 4.16. Save & Exit Setup

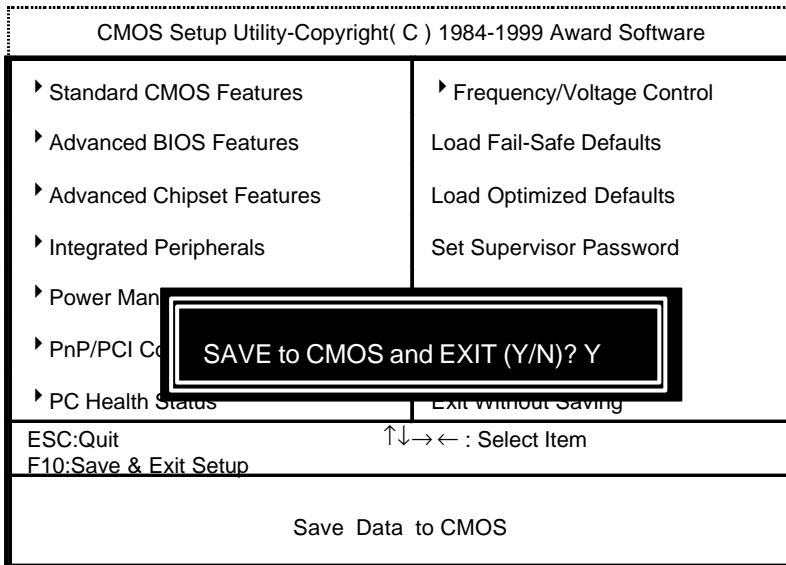


Figure 4.13: Save & Exit Setup

Type "Y" will quit the Setup Utility and save the user setup value to RTC CMOS.

Type "N" will return to Setup Utility.

#### 4.17. Exit Without Saving

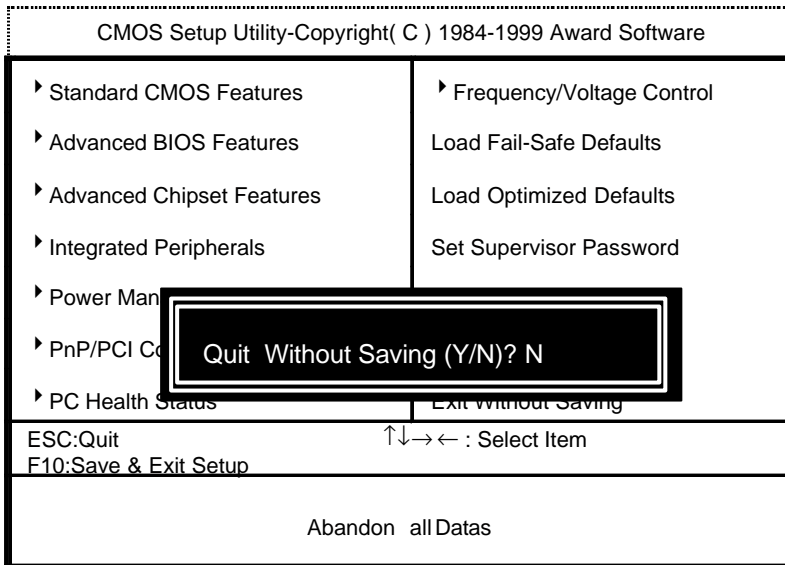


Figure 4.14: Exit Without Saving

Type "Y" will quit the Setup Utility without saving to RTC CMOS.

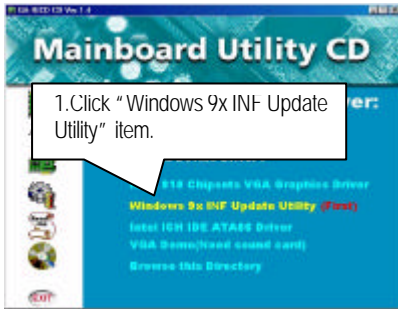
Type "N" will return to Setup Utility.



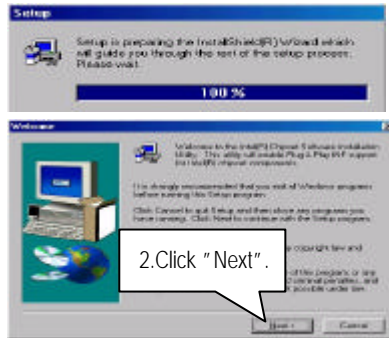
## Appendix A: Intel 810 Chipset Driver Installation

### A. Windows 9x INF Update Utility

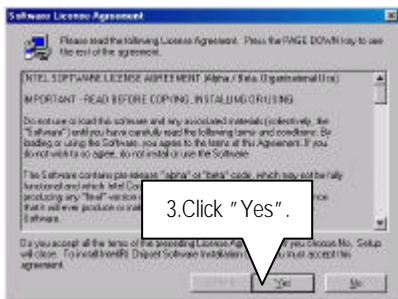
Insert the support CD that came with your motherboard into your CD-ROM drive or double-click the CD drive icon in **My Computer** to bring up the setup screen.



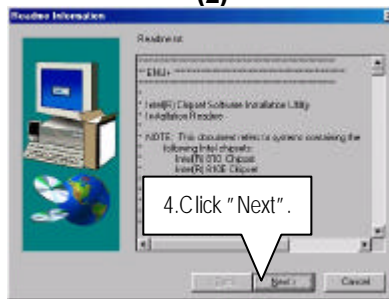
(1)



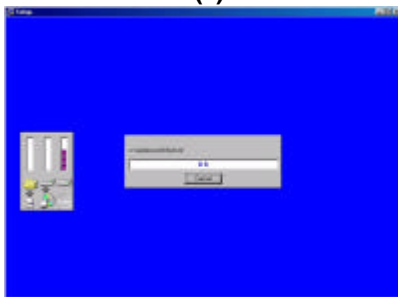
(2)



(3)



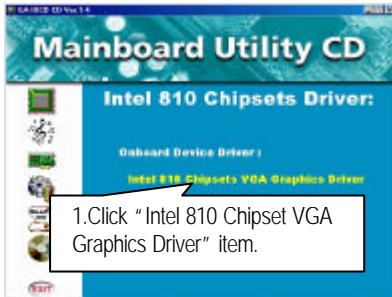
(4)



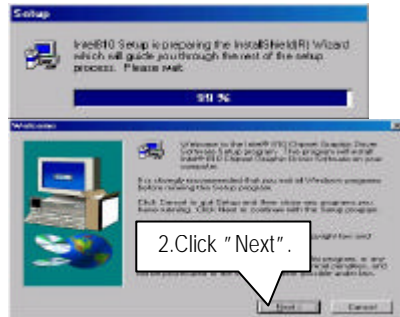
(5)

### B: Intel 810 Chipset VGA Graphics Driver Installation

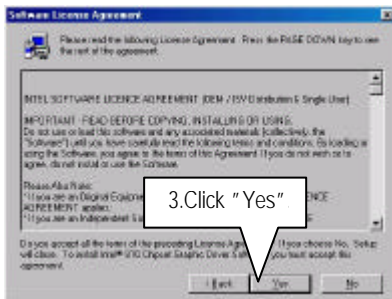
Insert the support CD that came with your motherboard into your CD-ROM drive or double-click the CD drive icon in **My Computer** to bring up the setup screen.



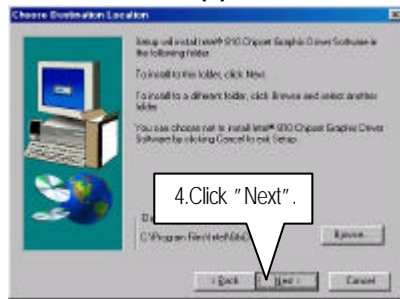
(1)



(2)



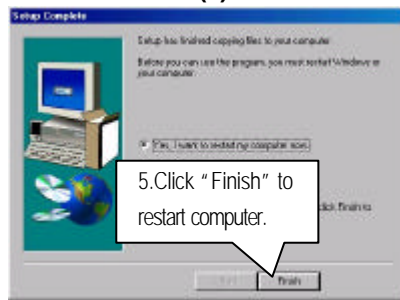
(3)



(4)



(5)

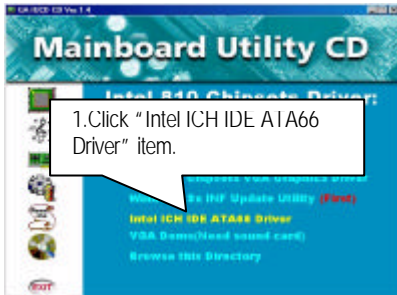


(6)

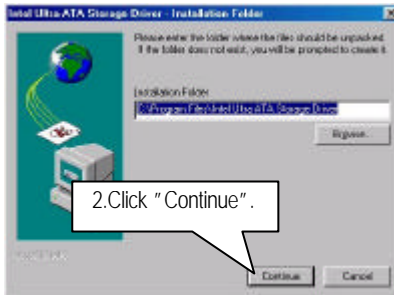


### C. Intel ICH IDE ATA66 Driver Installation

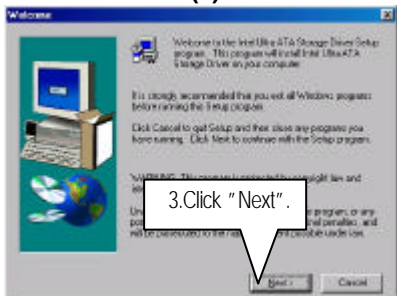
Insert the support CD that came with your motherboard into your CD-ROM drive or double-click the CD drive icon in **My Computer** to bring up the setup screen.



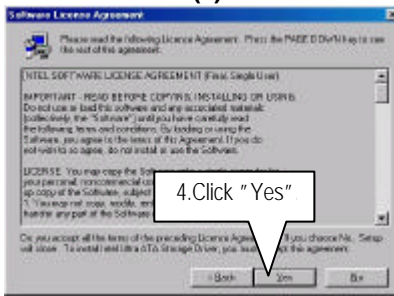
(1)



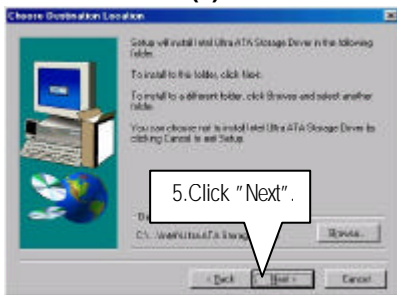
(2)



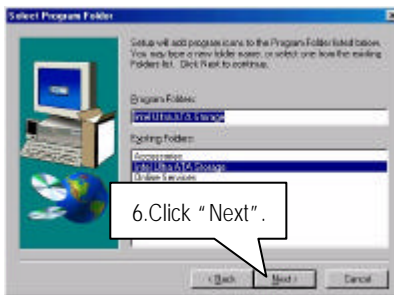
(3)



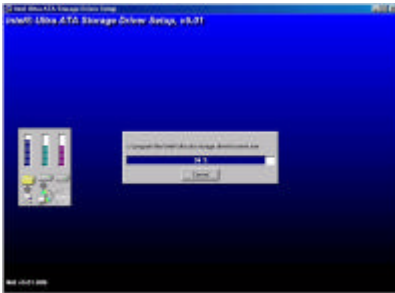
(4)



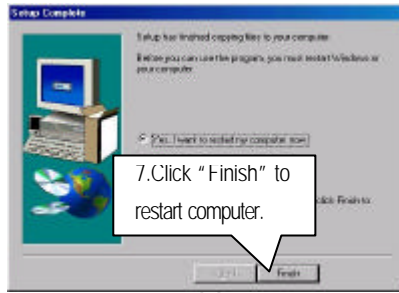
(5)



(6)



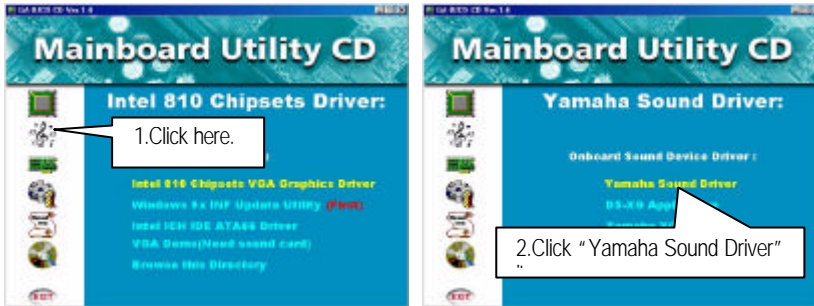
(7)



(8)

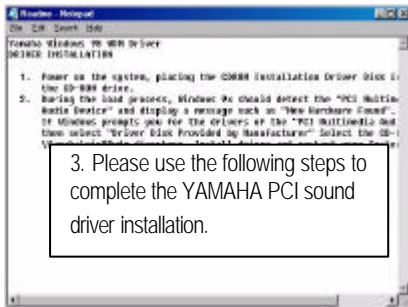
### Appendix B: YAMAHA Sound Driver Installation

Insert the support CD that came with your motherboard into your CD-ROM drive or double-click the CD drive icon in **My Computer** to bring up the setup screen.



(1)

(2)



(3)

## Appendix C: BIOS Flash Procedure

BIOS update procedure:

- ✓ Please check your BIOS vendor (AMI or AWARD) on the motherboard.
- ✓ It is recommended you copy the AWDFlash.exe or AMIFlash.exe in driver CD (D:\>Utility\BIOSFlash) and the BIOS binary files into the directory you made in your hard disk. 【i.e:C:\>Utility\ (C:\>Utility : denotes the driver and the directory where you put the flash utilities and BIOS file in.)】
- ✓ Restart your computer into MS-DOS mode or command prompt only for Win95/98, go into the directory where the new BIOS file are located use the utility AWDFlash.exe or AMIFlash.exe to update the BIOS.
- ✓ Type the following command once you have enter the directory where all the files are located  
C:\utility\ AWDFlash or AMIFlash <filename of the BIOS binary file intended for flashing>
- ✓ Once the process is finished, reboot the system

● Note : Please download the newest BIOS from our website ([www.gigabyte.com.tw](http://www.gigabyte.com.tw)) or contact your local dealer for the file.

**Appendix D: Acronyms**

Acron.	Meaning
ACPI	Advanced Configuration and Power Interface
POST	Power-On Self Test
LAN	Local Area Network
ECP	Extended Capabilities Port
APM	Advanced Power Management
DMA	Direct Memory Access
MHz	Megahertz
ESCD	Extended System Configuration Data
CPU	Central Processing Unit
SMP	Symmetric Multi-Processing
USB	Universal Serial Bus
OS	Operating System
ECC	Error Checking and Correcting
IDE	Integrated Dual Channel Enhanced
SCI	Special Circumstance Instructions
LBA	Logical Block Addressing
EMC	Electromagnetic Compatibility
BIOS	Basic Input / Output System
SMI	System Management Interrupt
IRQ	Interrupt Request
NIC	Network Interface Card
AGP	Accelerated Graphics Port
S.E.C.C.	Single Edge Contact Cartridge
LED	Light Emitting Diode
EPP	Enhanced Parallel Port
CMOS	Complementary Metal Oxide Semiconductor
I/O	Input / Output
ESD	Electrostatic Discharge
OEM	Original Equipment Manufacturer
SRAM	Static Random Access Memory
VID	Voltage ID
DMI	Desktop Management Interface
MIDI	Musical Interface Digital Interface
IOAPIC	Input Output Advanced Programmable Input Controller
DIMM	Dual Inline Memory Module
DRAM	Dynamic Random Access Memory

To be continued...

Acor.	Meaning
PCI	Peripheral Component Interconnect
PAC	PCI A.G.P. Controller
AMR	Audio Modem Riser
RIMM	Rambus in-line Memory Module
DRM	Dual Retention Mechanism
ISA	Industry Standard Architecture
MTH	Memory Translator Hub
CRIMM	Continuity RIMM

**DECLARATION OF CONFORMITY**  
Per FCC Part 2, Section 2.1077(a)

**FCC**

Responsible Party Name: G.B.T. INC.  
Address: 18365 Valley Blvd., Suite#A  
LA Puente, CA 91744  
Phone/Fax No: (818) 854-9338 / (818) 854-9339

I hereby declare that the product  
Product Name: Mother Board  
Model Number: GA-6WMM7

Conforms to the following specifications:  
FCC Part 15, Subpart B, Section 15.107(a) and Section 15.109(a).  
Class B Digital Device.

**Supplementary Information:**  
This device complies with part 5 of the FCC Rules. Operation is subject to the following two conditions: (1) This device may not cause harmful interference, and (2) this device must accept any interference received, including interference that may cause undesired operation.

Representative Person's Name: Eric Lu  
Signature: Eric Lu  
Date: May 7, 1999

### FCC Compliance Statement:

This equipment has been tested and found to comply with limits for a Class B digital device, pursuant to Part 15 of the FCC rules. These limits are designed to provide reasonable protection against harmful interference in residential installations. This equipment generates, uses, and can radiate radio frequency energy, and if not installed and used in accordance with the instructions, may cause harmful interference to radio communications. However, there is no guarantee that interference will not occur in a particular installation. If this equipment does cause

interference to radio or television equipment reception, which can be determined by turning the equipment off and on, the user is encouraged to try to correct the interference by one or more of the following measures:

- Reorient or relocate the receiving antenna
- Move the equipment away from the receiver
- Plug the equipment into an outlet on a circuit different from that to which the receiver is connected
- Consult the dealer or an experienced radio/television technician for additional suggestions

You are cautioned that any change or modifications to the equipment not expressly approved by the party responsible for compliance could void Your authority to operate such equipment.

This device complies with Part 15 of the FCC Rules. Operation is subjected to the following two conditions 1) this device may not cause harmful interference and 2) this device must accept any interference received, including interference that may cause undesired operation.

## Declaration of Conformity

We, Manufacturer/Importer  
(full address)

**G.B.T. Technology Trading GmbH**  
Ausschlagler Weg 41, 1F, 20537 Hamburg, Germany

declare that the product  
(description of the apparatus, system, installation to which it refers)

**Mother Board**  
GA-6WMM7

is in conformity with  
(reference to the specification under which conformity is declared)  
in accordance with 89/336 EEC-EMC Directive

- |   |  |   |   |
|---|--|---|---|
| <input type="checkbox"/> EN 55011                     | Limits and methods of measurement of radio disturbance characteristics of industrial, scientific and medical (ISM) high frequency equipment                | <input type="checkbox"/> EN 61000-3-2*            | Disturbances in supply systems caused by household appliances and similar electrical equipment "Harmonics"            |
| <input type="checkbox"/> EN 55013                     | Limits and methods of measurement of radio disturbance characteristics of broadcast receivers and associated equipment                                     | <input checked="" type="checkbox"/> EN 60555-2    |   |
| <input type="checkbox"/> EN 55014                     | Limits and methods of measurement of radio disturbance characteristics of household electrical appliances, portable tools and similar electrical apparatus | <input checked="" type="checkbox"/> EN 61000-3-3* | Disturbances in supply systems caused by household appliances and similar electrical equipment "Voltage fluctuations" |
| <input type="checkbox"/> EN 55015                     | Limits and methods of measurement of radio disturbance characteristics of fluorescent lamps and luminaries   | <input checked="" type="checkbox"/> EN 50081-1    | Generic emission standard Part 1: Residual, commercial and light industry   |
| <input type="checkbox"/> EN 55020                     | Immunity from radio interference of broadcast receivers and associated equipment   | <input checked="" type="checkbox"/> EN 50082-1    | Generic immunity standard Part 1: Residual, commercial and light industry   |
| <input checked="" type="checkbox"/> EN 55022          | Limits and methods of measurement of radio disturbance characteristics of information technology equipment   | <input type="checkbox"/> EN 55081-2               | Generic emission standard Part 2: Industrial environment  |
| <input type="checkbox"/> DIN VDE 0855 part 10 part 12 | Cabled distribution systems; Equipment for receiving and/or distribution from sound and television signals   | <input type="checkbox"/> EN 55082-2               | Generic immunity standard Part 2: Industrial environment  |
| <input checked="" type="checkbox"/> CE marking        |  | <input type="checkbox"/> ENV 55104                | Immunity requirements for household appliances tools and similar apparatus  |
|   |  | <input type="checkbox"/> EN 50091- 2              | EMC requirements for uninterruptible power systems (UPS)  |



(EC conformity marking)

The manufacturer also declares the conformity of above mentioned product with the actual required safety standards in accordance with LVD 73/23 EEC

- |                                   |   |                                     |   |
|-----------------------------------|---|-------------------------------------|---|
| <input type="checkbox"/> EN 60065 | Safety requirements for mains operated electronic and related apparatus for household and similar general use | <input type="checkbox"/> EN 60950   | Safety for information technology equipment including electrical business equipment |
| <input type="checkbox"/> EN 60335 | Safety of household and similar electrical appliances   | <input type="checkbox"/> EN 50091-1 | General and Safety requirements for uninterruptible power systems (UPS)             |

Manufacturer/Importer

Signature : Rex Lin

(Stamp)

Date : May. 7, 1999

Name : Rex Lin



