

4. BIOS CONFIGURATION

Award's BIOS ROM has a built-in Setup program that allows users to modify the basic system configuration.

This type of information is stored in battery-backed CMOS SRAM so that it retains the Setup information when the power is turned off.

4.1. ENTERING SETUP

Power ON the computer and press immediately will allow you to enter Setup.

The other way to enter Setup is to power on the computer, when the below message appears briefly at the bottom of the screen during the POST (Power On Self Test), press Key or simultaneously press <Ctrl>, <Alt>, and <Esc> keys.

- **Press DEL to enter SETUP.**

If the message disappears before you respond and you still wish to enter Setup, restart the system to try again by turning it OFF then ON or pressing the "RESET" bottom on the system case.

You may also restart by simultaneously press <Ctrl>, <Alt>, and keys.

4.2. CONTROL KEYS

Up arrow	Move to previous item.
Down arrow	Move to next item.
Left arrow	Move to the item in the left hand.
Right arrow	Move to the item in the right hand.
Esc key	Main Menu - Quit and not save changes into CMOS Status Page Setup Menu and Option Page Setup Menu - Exit current page and return to Main Menu.
PgUp key	Increase the numeric value or make changes.
PgDn key	Decrease the numeric value or make changes.
F1 key	General help, only for Status Page Setup Menu and Option Page Setup Menu.
F2 key	Change color from total 16 colors.
F3 key	Calendar, only for Status Page Setup Menu.
F4 key	Reserved.
F5 key	Restore the previous CMOS value from CMOS, only for Option Page Setup Menu.
F6 key	Load the default CMOS value from BIOS default table, only for Option Page Setup Menu.
F7 key	Load the default.
F8 key	Reserved.
F9 key	Reserved.
F10 key	Save all the CMOS changes, only for Main Menu.

4.3. GETTING HELP

4.3.1. Main Menu

The on-line description of the highlighted setup function is displayed at the bottom of the screen.

4.3.2. Status Page Setup Menu / Option Page Setup Menu

Press F1 to pop up a small help window that describes the appropriate keys to use and the possible selections for the highlighted item. To exit the Help Window press <Esc>.

4.4. THE MAIN MENU

Once you enter Award BIOS CMOS Setup Utility, the Main Menu (Figure 4.1) will appear on the screen.

The Main Menu allows you to select setup functions and exit choices. Use arrow keys to select among the items and press <Enter> to accept or enter the sub-menu.



Figure 4.1: Main Menu

- Standard CMOS setup

This setup page includes all the items in a standard compatible BIOS.

- BIOS features setup

This setup page includes all the items of Award special enhanced features.

- **Chipset features setup**
This setup page includes all the items of chipset special features.
- **Power management setup**
This setup page includes all the items of Green function features.
- **PNP/PCI configuration**
This setup page includes all the items of PNP/PCI configuration features.
- **Load BIOS defaults**
BIOS defaults indicates the most appropriate value of the system parameter which the system would be in safe configuration.
- **Load Performance defaults**
Performance Defaults indicates the value of the system parameters which the system would be in best performance configuration.
- **Integrated Peripherals**
This setup page includes all the items of peripherals features.
- **Supervisor Password**
Change, set, or disable password. It allows you to limit access to the system and Setup, or just to Setup.
- **User Password**
Change, set, or disable password. It allows you to limit access to the system.
- **IDE HDD auto detection**
Automatically configure hard disk parameter.
- **Save & exit setup**
Save CMOS value changes to CMOS and exit setup.
- **Exit without save**
Abandon all CMOS value changes and exit setup.

4.5. STANDARD CMOS SETUP MENU

The items in Standard CMOS Setup Menu (Figure 4.2) are divided into 9 categories. Each category includes no, one or more than one setup items. Use the arrows to highlight the item and then use the <PgUp> or <PgDn> keys to select the value you want in each item.



Figure 4.2: Standard CMOS Setup Menu

- **Date**

The date format is <day>, <date> <month> <year>. Press <F3> to show the calendar.

Day	The day, from Sun to Sat, determined by the BIOS and is display-only
Date	The date, from 1 to 31 (or the maximum allowed in the month)
Month	The month, Jan. through Dec.
Year	The year, from 1994 through 2079

- **Time**

The time format is <hour> <minute> <second>.

The time is calculated base on the 24-hour military-time clock.

For example, 1 p.m. is 13:00:00.

- Primary HDDs / Secondary HDDs

The category identify the types of hard disk from drive C to drive F

4 devices that has been installed in the computer.

There are three options for definable type; User, Auto and None .

Type User is user-definable; and type Auto means automatically detecting HDD's type and None means No IDE HDD installed.

If you select Type User, related information is asked to be entered to the following items.

Enter the information directly from the keyboard and press <Enter>.

Those information should be provided in the documentation from your hard disk vendor or the system manufacturer.

CYLS.	number of cylinders
HEADS	number of heads
PRECOMP	write precomp
LANDZONE	landing zone
SECTORS	number of sectors

If a hard disk has not been installed select NONE and press <Enter>.

- Drive A type / Drive B type

The category identify the types of floppy disk drive A or drive B that has been installed in the computer.

None	No floppy drive installed
360K, 5.25 in.	5-1/4 inch PC-type standard drive; 360 kilobyte capacity.
1.2M, 5.25 in.	5-1/4 inch AT-type high-density drive; 1.2 megabyte capacity (3-1/2 inch when 3 Mode is Enabled).
720K, 3.5 in.	3-1/2 inch double-sided drive; 720 kilobyte capacity
1.44M, 3.5 in.	3-1/2 inch double-sided drive; 1.44 megabyte capacity.
2.88M, 3.5 in.	3-1/2 inch double-sided drive; 2.88 megabyte capacity.

- Video

The category detects the type of adapter used for the primary system monitor that must match your video display card and monitor.

Although secondary monitors are supported, you do not have to select the type in setup.

EGA/VGA	Enhanced Graphics Adapter/Video Graphics Array. For EGA, VGA, SVGA, or VGA monitor adapters
CGA 40	Color Graphics Adapter, power up in 40 column mode
CGA 80	Color Graphics Adapter, power up in 80 column mode
MONO	Monochrome adapter, includes high resolution monochrome adapters

- Halt on

The category determines whether the computer will stop if an error is detected during power up.

NO Errors	The system boot will not be stopped for any error that may be detected
All Errors	Whenever the BIOS detects a non-fatal error, the system will be stopped and you will be prompted
All, But Keyboard	The system boot will not stop for a keyboard error; it will stop for all other errors
All, But Diskette	The system boot will not stop for a disk error; it will stop for all other errors
All, But Disk/Key	The system boot will not stop for a keyboard or disk error; it will stop for all other errors

- Memory

The category is display-only which is determined by POST (Power On Self Test) of the BIOS.

Base Memory

The POST of the BIOS will determine the amount of base (or conventional) memory installed in the system.

The value of the base memory is typically 512 K for systems with 512 K memory installed on the motherboard, or 640 K for systems with 640 K or more memory installed on the motherboard.

Extended Memory

The BIOS determines how much extended memory is present during the POST.

This is the amount of memory located above 1 MB in the CPU's memory address map.

Expanded Memory

Expanded Memory is memory defined by the Lotus / Intel / Microsoft (LIM) standard as EMS.

Many standard DOS applications can not utilize memory above 640, the Expanded Memory Specification (EMS) swaps memory which not utilized by DOS with a section, or frame, so these applications can access all of the system memory.

Memory can be swapped by EMS is usually 64K within 1 MB or memory above 1 MB, depends on the chipset design.

Expanded memory device driver is required to use memory as Expanded Memory.

Other Memory

This refers to the memory located in the 640 to 1024 address space. This is memory that can be used for different applications.

DOS uses this area to load device drivers to keep as much base memory free for application programs. Most use for this area is Shadow RAM.

4.6. BIOS FEATURES SETUP

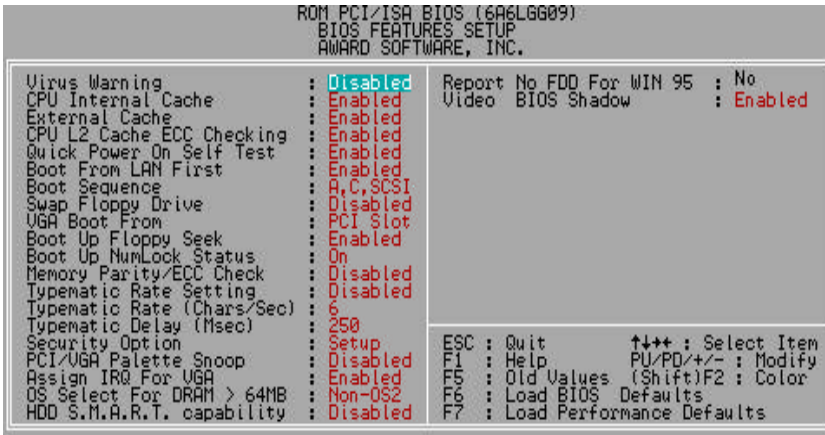


Figure 4.3: BIOS Features Setup

- Virus Warning

This category flashes on the screen. During and after the system boots up, any attempt to write to the boot sector or partition table of the hard disk drive will halt the system and the following error message will appear, in the mean time, you can run anti-virus program to locate the problem.

The default value is Disabled.

Enabled	Activate automatically when the system boots up causing a warning message to appear when anything attempts to access the boot sector or hard disk partition table.
Disabled	No warning message appears when anything attempts to access the boot sector or hard disk partition table.

- CPU Internal Cache / External Cache

These two categories speed up memory access. However, it depends on CPU / chipset design.

The default value is Enabled.

Enabled	Enable cache function.
Disabled	Disable cache function.

- CPU L2 Cache ECC Checking

The default value is Enabled.

Enabled	Enable CPU L2 Cache ECC Checking
Disabled	Disable CPU L2 Cache ECC Checking

- Quick Power On Self Test

This category speeds up Power On Self Test (POST) after you power on the computer. If it set to Enable, BIOS will skip some check items during POST.

The default value is Enabled.

Enabled	Enable quick POST.
Disabled	Normal POST.

- Boot From LAN First

The default value is Enabled.

Enabled	Enable Boot From LAN First
Disabled	Disable Boot From LAN First
Auto	Auto detect Boot From LAN First

☞ You can set "Auto" or "Enabled" to boot from LAN first.

- Boot Sequence

This category determines which drive computer searches first for the disk operating system (i.e., DOS). Default value is A, C, SCSI.

X1, X2, X3	System will first search for X1 disk drive then X2 disk drive and then X3 disk drive.
------------	---

- Swap Floppy Drive

The default value is Disabled.

Enabled	Floppy A & B will be swapped under DOS.
Disabled	Floppy A & B will be normal definition.

- VGA Boot From

The default value is PCI Slot

AGP	System will boot from AGP Display Card
PCI Slot	System will boot from PCI Slot VGA Card

- Boot Up Floppy Seek

During POST, BIOS will determine the floppy disk drive installed is 40 or 80 tracks. 360 K type is 40 tracks 720 K, 1.2 M and 1.44 M are all 80 tracks. The default value is Enabled.

Enabled	BIOS searches for floppy disk drive to determine it is 40 or 80 tracks. Note that BIOS can not tell from 720 K, 1.2 M or 1.44 M drive type as they are all 80 tracks
Disabled	BIOS will not search for the type of floppy disk drive by track number. Note that there will not be any warning message if the drive installed is 360 K

- Boot Up NumLock Status

The default value is On.

On	Keypad is number keys.
Off	Keypad is arrow keys.

- Memory Parity/ECC Check

The default value is Disabled.

Enabled	Enabled Memory Parity/ECC Check Function.
Disabled	Disabled Memory Parity/ECC Check Function.

- Typematic Rate Setting

The default value is Disabled.

Enabled	Enable Keyboard Typematic rate setting.
Disabled	Disable Keyboard Typematic rate setting.

- Typematic Rate (Chars / Sec.)

The default value is 6.

6-30	Set the maximum Typematic rate from 6 chars. Per second to 30 characters. Per second.
------	---

- Typematic Delay (Msec.)

The default value is 250.

250-1000	Set the time delay from first key to repeat the same key in to computer.
----------	--

- Security option

The default value is Setup.

Setup	The system will boot and access to Setup will be denied if the correct password is not entered at the prompt.
System	The system will not boot and access to Setup will be denied if the correct password is not entered at the prompt.

- **To disable security, select PASSWORD SETTING at Main Menu and then you will be asked to enter password. If the user does not type anything and just press <Enter>, it will disable security. Once the security is disabled, the system will boot and you can enter Setup freely.**

- PCI/VGA Palette Snoop

The default value are Disabled.

Enabled	For having Video Card on ISA Bus and VGA Card on PCI Bus.
Disabled	For VGA Card only.

- Assign IRQ For VGA

The default value is Enabled.

Enabled	Assign IRQ For VGA
Disabled	Not assign IRQ For VGA

- OS Select For DRAM>64MB

The default value is Non-OS2.

Non-OS2	Using non-OS2 operating system.
OS2	Using OS2 operating system and DRAM>64MB.

- HDD S.M.A.R.T. Capability

The default value is Disable.

Enable	Enable HDD S.M.A.R.T. Capability
Disable	Disable HDD S.M.A.R.T. Capability

- Report No FDD For WIN 95

The default value is No.

No	Assign IRQ6 For FDD.
Yes	FDD Detect IRQ6 Automatically.

- Video BIOS Shadow

It determines whether video BIOS will copied to RAM, however, it is optional from chipset design. Video Shadow will increase the video speed.

The default value is Enable.

Enabled	Video shadow is enabled.
Disabled	Video shadow is disabled.

4.7. CHIPSET FEATURES SETUP

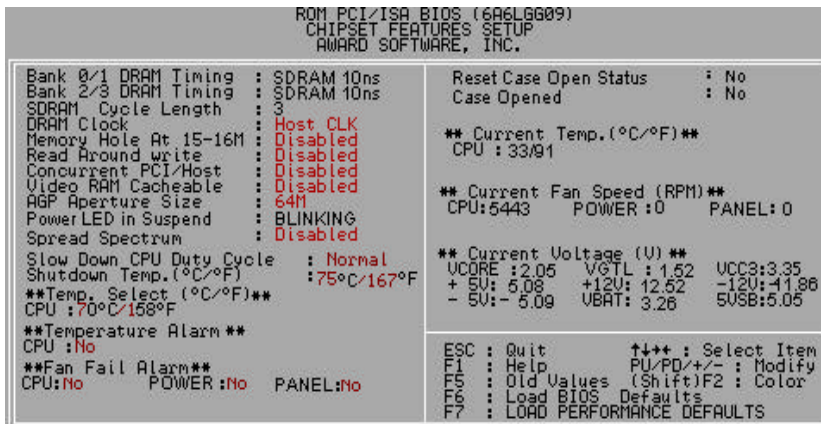


Figure 4.4: Chipset Features Setup

- Bank 0/1 DRAM Timing

The default value is SDRAM 10ns.

SDRAM 10ns	For SDRAM 10ns DRAM timing operation.
Turbo	For Turbo DRAM timing operation.

- Bank 2/3 DRAM Timing

The default value is SDRAM 10ns.

SDRAM 10ns	For SDRAM 10ns DRAM timing operation.
Turbo	For Turbo DRAM timing operation.

- SDRAM Cycle Length

The default value is 3.

3	For Slower SDRAM DIMM module.
2	For Fastest SDRAM DIMM module.

- DRAM Clock

The default value is Host CLK.

Host CLK	Set DRAM CLK equal to Host CLK.
66MHz	Set DRAM CLK to 66MHz.

- Memory Hole AT 15-16M

The default value is Disabled.

15M-16M	Set Address=15-16MB relocate to ISA BUS.
Disabled	Normal Setting.

- Read Around write

The default value is Disabled.

Enabled	When set Enabled this feature speeds up data read performance.
Disabled	Normal operation.

- Concurrent PCI/Host

The default value is Disabled.

Enabled	Enabled Concurrent PCI/Host.
Disabled	Disabled Concurrent PCI/Host.

- Video RAM Cacheable

The default value is Disabled

Disabled	Disable this function.
Enabled	Enable this function to get better VGA performance; while some brands of VGA must be disabled this function (e.g.ET4000W32P).

- AGP Aperture Size

The default value is 64MB.

64MB	Set AGP Aperture Size to 64MB.
32MB	Set AGP Aperture Size to 32MB.
16MB	Set AGP Aperture Size to 16MB.
8MB	Set AGP Aperture Size to 8MB.
4MB	Set AGP Aperture Size to 4MB.
128MB	Set AGP Aperture Size to 128MB.

- Spread Spectrum

The default value is Disabled.

Disabled	Normal
0.5%(CNTR)	Set Spread Spectrum 0.5%(CNTR)

- Power LED in Suspend

The default value is BLINKING.

BLINKING	Set Power LED in Suspend at BLINKING mode.
ON	Set Power LED in Suspend at ON mode.
OFF/DUAL	Set Power LED in Suspend at OFF/DUAL mode.

- Slow Down CPU Duty Cycle (Optional)

The default value is Normal.

Normal	Normal Operation
12.5%~75.0%	Monitor CPU Temp. will cause system slow down CPU Duty Cycle to 12.5%~75.0%.

- Shutdown Temp. (°C / °F) (Optional)

(This function will be effective only for the operating systems that support ACPI Function.)

The default value is 75°C / 167°F

Disabled	Normal Operation
60°C / 140°F	Monitor CPU Temp. at 60°C / 140°F, if Temp. > 60°C / 140°F system will automatically power off .
65°C / 149°F	Monitor CPU Temp. at 65°C / 149°F, if Temp. > 65°C / 149°F system will automatically power off .
70°C / 158°F	Monitor CPU Temp. at 70°C / 158°F, if Temp. > 70°C / 158°F system will automatically power off .
75°C / 167°F	Monitor CPU Temp. at 75°C / 167°F, if Temp. > 75°C / 167°F system will automatically power off .

- Temp. Select (°C / °F) (Optional)

The default value is 70°C / 158°F

65°C / 149°F	Monitor CPU Temp. at 65°C / 149°F
70°C / 158°F	Monitor CPU Temp. at 70°C / 158°F
75°C / 167°F	Monitor CPU Temp. at 75°C / 167°F
80°C / 176°F	Monitor CPU Temp. at 80°C / 176°F
85°C / 185°F	Monitor CPU Temp. at 85°C / 185°F
90°C / 194°F	Monitor CPU Temp. at 90°C / 194°F
95°C / 203°F	Monitor CPU Temp. at 95°C / 203°F

- Temperature Alarm (Optional)

The default value is No

No	When CPU Temp. overheat, then system won't alarm.
Yes	When CPU Temp. overheat, then system will alarm.

- Fan Fail Alarm (Optional)

CPU/POWER/PANEL

No	Fan Fail Alarm Function Disabled.
Yes	Fan Fail Alarm Function Enabled.

- Reset Case Open Status (Optional)
- Case Opened (Optional)

If the case is closed, "Case Opened" will show "No".
If the case have been opened, "Case Opened" will show "Yes" .
If you want to reset "Case Opened" value, set "Reset Case Open Status" to "Yes" and save CMOS, your computer will restart.
- Current Temp. (°C / °F) (Optional)

Detect Temp. automatically.
- Current FAN Speed (RPM) (Optional)

Detect Fan speed status automatically.
- Current Voltage (v) V_{CORE} / V_{GTL} / V_{CC3} / ±12V / ±5V / V_{BAT} / 5V_{SB} (Optional)

Detect system' s voltage status automatically.

4.8. POWER MANAGEMENT SETUP

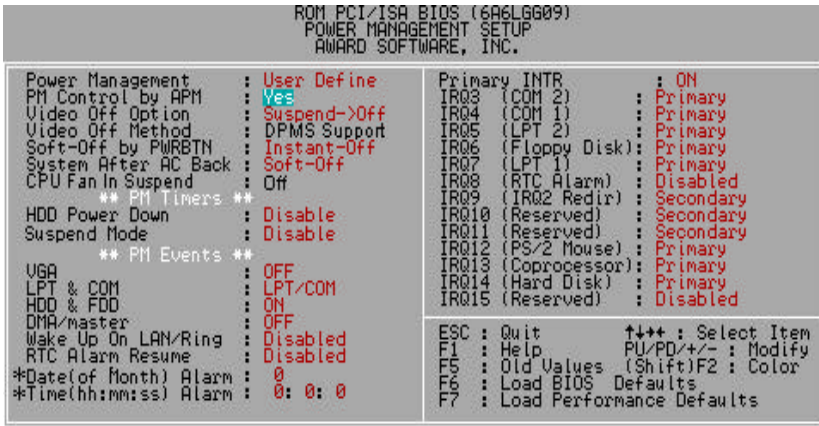


Figure 4.5: Power Management Setup

* These two items will show up when “Resume by Alarm” is enabled.

- Power Management

The default value is User Define.

User Define	For configuring our own power management features.
Min Saving	Enable Green function.
Man Saving	Disable Green function.

- PM Control by APM

The default value is Yes.

Yes	Enabled software APM function.
No	Disabled software APM function.

- Video off Option

The default value is Suspend->Off.

Suspend->Off	Set Video off if system enter Suspend Mode.
Always On	Set Video always on.
All Modes->Off	Set Video All Modes.

- Video Off Method

The default value is DPMS Support.

V/H SYNC + Blank	BIOS will turn off V/H-SYNC when gets into Green mode for Green monitor power saving.
Blank Screen	BIOS will only black monitor when gets into Green mode.
DPMS Support	BIOS will use DPMS Standard to control VGA card. (The Green type VGA card will turn of V/H-SYNC automatically.)

- Soft-off by PWRBTN

The default value is Instant-off.

Instant-off	Soft switch ON/OFF for power ON/OFF.
Delay 4 sec	Soft switch on 4sec for power OFF.

- System After AC Back

The default value is Soft-Off.

Memory	This function depends on computer status
Soft-Off	Set System Soft-Off Status.
Full-On	Set System Full-On Status.

- CPU FAN In Suspend

The default value is Off.

On	Disable this function.
Off	Stop CPU FAN when entering Suspend mode.

- HDD Power Down

The default value is Disabled.

Disabled	Disabled HDD Power Down mode function.
1-15 mins.	Enabled HDD Power Down mode between 1 to 15 mins.

- Suspend Mode

The default value is Disabled.

Disabled	Disabled Suspend Mode.
1 min - 1 Hour	Setup the timer to enter Suspend Mode.

- VGA

The default value is OFF.

OFF	Disable monitor VGA activity.
ON	Enable monitor VGA activity.

- LPT & COM

The default value is LPT/COM.

LPT/COM	Enabled LPT/COM Ports Activity.
NONE	Normal Operation.
LPT	Enabled LPT Ports Activity.
COM	Enabled COM Ports Activity.

- HDD & FDD

The default value is ON.

ON	Enabled HDD & FDD Ports Activity
OFF	Disabled HDD & FDD Ports Activity

- DMA/master

The default value is OFF.

ON	Don't detect DMA/master PM event.
OFF	Normal Operation.

- Wake Up On LAN/Ring

The default value is Disabled.

Enabled	Enable Wake Up On LAN/Ring
Disabled	Disable Wake Up On LAN/Ring

- RTC Alarm Resume

The default value is Disabled.

Disabled	Disable this function.
Enabled	Enable alarm function to POWER ON system.

If the "RTC Alarm Resume" is Enabled.

Date (of Month) Alarm :	0~31
Time (hh: mm: ss) Alarm :	(0~23) : (0~59) : (0~59)

- Primary INTR

The default value is ON.

ON	Primary INTR function is on.
OFF	Normal Operation.

- IRQ [3-7,9-15]

The default value is Primary/Secondary/Disabled.

Disabled	Disable this function.
Primary	The resource is used by Primary device .
Secondary	The resource is used by Secondary device .

4.9. PNP/PCI CONFIGURATION

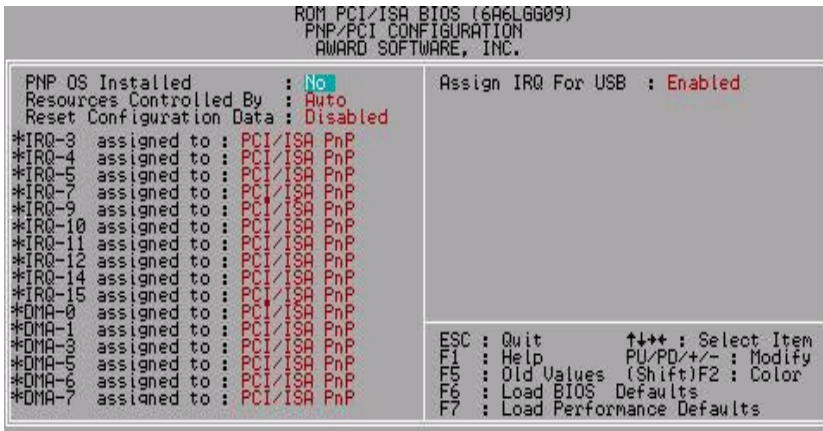


Figure 4.6: PCI Slot Configuration

*These item will show up when “Resources Controlled By :Manual” is select.

- PNP OS Installed

The default value is No.

Yes	Enable PNP OS Installed function.
No	Disable PNP OS Installed function.

- Resources Controlled by

The default value is Auto.

Manual	User can set the PnP resource (I/O Address, IRQ & DMA channels) used by legacy ISA DEVICE.
Auto	BIOS automatically use these PnP rescuers.

- Reset Configuration Data

The default value is Disabled.

Disabled	Disable this function.
Enabled	Enable clear PnP information in ESCD.

- IRQ (3,4,5,7,9,10,11,12,14,15), DMA(0,1,3,5,6,7) assigned to

The default value is "PCI/ISA PnP".

PCI/ISA PnP	The resource is used by PCI/ISA PnP device (PCI or ISA).
-------------	--

- Assign IRQ For USB

The default value is Enabled.

Enabled	Assign a specific IRQ for USB
Disabled	No IRQ is assigned for USB

4.10. LOAD BIOS DEFAULTS



Figure 4.7: Load BIOS Defaults

- Load BIOS Defaults

To load BIOS defaults value to CMOS SRAM, enter "Y". If not, enter "N".

4.11. LOAD PERFORMANCE DEFAULTS



Figure 4.8: Load Performance Defaults

- Load Performance Defaults

To load Performance defaults value to CMOS SRAM, enter "Y". If not, enter "N".

4.12. INTEGRATED PERIPHERALS

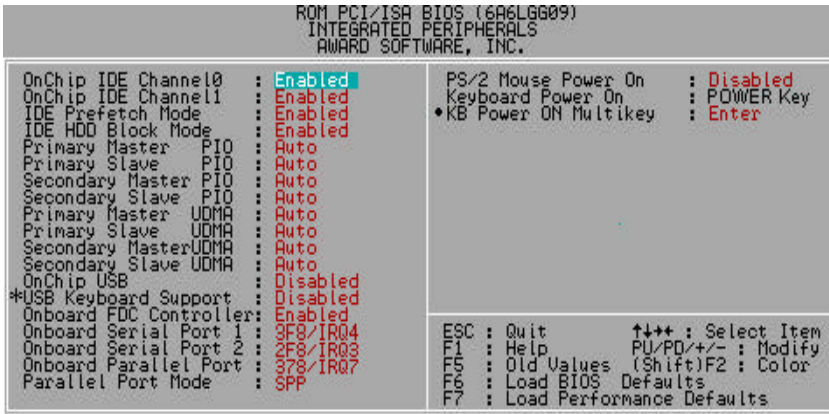


Figure 4.9: Integrated peripherals

*When OnChip USB select “Enabled”, “USB Keyboard Support” will show up.

- This item will show up when “Keyboard Power On: Multikey” is selected.

- OnChip IDE Channel 0

The default value is Enabled.

Enabled	Enable onboard 1st channel IDE port.
Disabled	Disable onboard 1st channel IDE port.

- OnChip IDE Channel 1

The default value is Enabled.

Enabled	Enable onboard 1st channel IDE port.
Disabled	Disable onboard 1st channel IDE port.

- IDE Prefetch Mode

The default value is Enabled.

Enabled	Enabled IDE Prefetch Mode.
Disabled	Disabled IDE Prefetch Mode.

- IDE HDD Block Mode

The default value is Enabled.

Enabled	Enable IDE HDD Block Mode
Disabled	Disable IDE HDD Block Mode

- Primary Master PIO (for onboard IDE 1st channel).

The default value is Auto.

Auto	BIOS will automatically detect the IDE HDD Accessing mode.
Mode0~4	Manually set the IDE Accessing mode.

- Primary Slave PIO (for onboard IDE 1st channel).

The default value is Auto.

Auto	BIOS will automatically detect the IDE HDD Accessing mode.
Mode0~4	Manually set the IDE Accessing mode.

- Secondary Master PIO (for onboard IDE 2nd channel).

The default value is Auto.

Auto	BIOS will automatically detect the IDE HDD Accessing mode.
Mode0~4	Manually set the IDE Accessing mode.

- Secondary Slave PIO (for onboard IDE 2nd channel).

The default value is Auto.

Auto	BIOS will automatically detect the IDE HDD Accessing mode.
Mode0~4	Manually set the IDE Accessing mode.

- Primary Master UDMA.

The default value is Auto.

Auto	BIOS will automatically detect the IDE HDD Accessing mode.
Disabled	Disable UDMA function.

- Primary Slave UDMA.

The default value is Auto.

Auto	BIOS will automatically detect the IDE HDD Accessing mode.
Disabled	Disable UDMA function.

- Secondary Master UDMA.

The default value is Auto.

Auto	BIOS will automatically detect the IDE HDD Accessing mode.
Disabled	Disable UDMA function.

- Secondary Slave UDMA.

The default value is Auto.

Auto	BIOS will automatically detect the IDE HDD Accessing mode.
Disabled	Disable UDMA function.

- OnChip USB

The default value is Disabled

Enabled	Enabled OnChip USB Controller.
Disabled	Disabled OnChip USB Controller.

- USB Keyboard Support

The default value is Disabled.

Enabled	Enabled USB Keyboard Support.
Disabled	Disabled USB Keyboard Support.

- Onboard FDC Controller

The default value is Enabled.

Enabled	Enable onboard FDC port.
Disabled	Disable onboard FDC port.

- Onboard Serial Port 1

The default value is 3F8/IRQ4.

Auto	BIOS will automatically setup the port 1 address.
3F8/IRQ4	Enable onboard Serial port 1 and address is 3F8.
2F8/IRQ3	Enable onboard Serial port 1 and address is 2F8.
3E8/IRQ4	Enable onboard Serial port 1 and address is 3E8.
2E8/IRQ3	Enable onboard Serial port 1 and address is 2E8.
Disabled	Disable onboard Serial port 1.

- Onboard Serial Port 2

The default value is 2F8/IRQ3.

Auto	BIOS will automatically setup the port 2 address.
3F8/IRQ4	Enable onboard Serial port 2 and address is 3F8.
2F8/IRQ3	Enable onboard Serial port 2 and address is 2F8.
3E8/IRQ4	Enable onboard Serial port 2 and address is 3E8.
2E8/IRQ3	Enable onboard Serial port 2 and address is 2E8.
Disabled	Disable onboard Serial port 2.

- Onboard Parallel port

The default value is 378/IRQ7.

378/IRQ7	Enable onboard LPT port and address is 378/IRQ7.
278/IRQ5	Enable onboard LPT port and address is 278/IRQ5.
3BC/IRQ7	Enable onboard LPT port and address is 3BC/IRQ7.
Disabled	Disable onboard LPT port.

- Parallel Port Mode

The default value is SPP.

SPP	Using Parallel port as Standard Printer Port.
EPP	Using Parallel port as Enhanced Parallel Port.
ECP	Using Parallel port as Extended Capabilities Port.
ECP+EPP	Using Parallel port as ECP & EPP mode.

- PS/2 Mouse Power on

The default value is Disabled.

Disabled	Disable PS/2 Mouse Power on .
DbIClick	Double click twice on PS/2 left or right bottom.

- Keyboard Power on

The default value is POWER Key.

POWER Key	If your keyboard have "POWER Key" button, you can press the key to power on your system.
Disabled	Disable Keyboard Power on .
Multikey	Enter multikey combination to Power on system.

- KB Power ON Multikey

Enter	Enter from 1 to 5 characters to set the Keyboard Power On Password.
-------	---

4.13. SUPERVISOR / USER PASSWORD

When you select this function, the following message will appear at the center of the screen to assist you in creating a password.



Figure 4.10: Password Setting

Type the password, up to eight characters, and press <Enter>. The password typed now will clear previously entered password from CMOS memory.

You will be asked to confirm the password. Type the password again and press <Enter>. You may also press <Esc> to abort the selection and not enter a password.

To disable password, just press <Enter> when you are prompted to enter password. A message will confirm the password being disabled.

Once the password is disabled, the system will boot and you can enter Setup freely.

PASSWORD DISABLED

If you select System at Security Option of BIOS Features Setup Menu, you will be prompted for the password every time the system is rebooted or any time you try to enter Setup.

If you select Setup at Security Option of BIOS Features Setup Menu, you will be prompted only when you try to enter Setup.

4.14. IDE HDD AUTO DETECTION

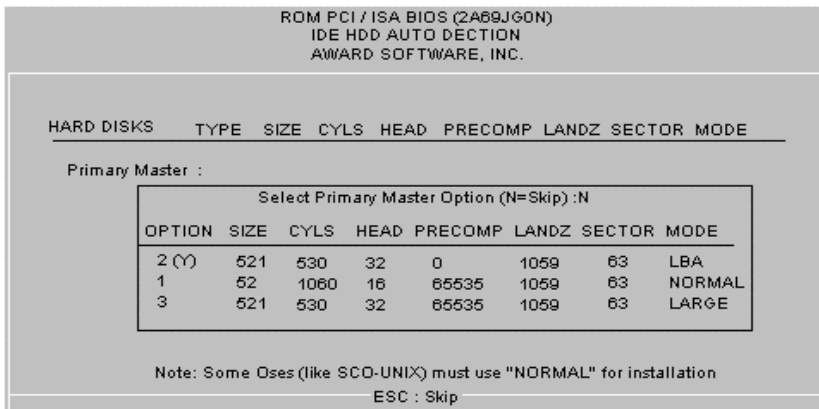


Figure 4.11: IDE HDD Auto Detection

Type "Y" will accept the H.D.D. parameter reported by BIOS.

Type "N" will keep the old H.D.D. parameter setup. If the hard disk cylinder NO. is over 1024, then the user can select LBA mode or LARGE mode for DOS partition larger than 528 MB.

4.15. SAVE & EXIT SETUP



Figure 4.12: Save & Exit Setup

Type "Y" will quit the Setup Utility and save the user setup value to RTC CMOS SRAM.

Type "N" will return to Setup Utility.

4.16. EXIT WITHOUT SAVING



Figure 4.13: Exit Without Saving

Type "Y" will quit the Setup Utility without saving to RTC CMOS SRAM.

Type "N" will return to Setup Utility.

APPENDIX A : Bugs & Limitations

1. For some SDRAM Modules, when you are running Winstone 99 (Business Winstone 99) under the Windows NT4.0 operating system, the following error message may appear:

“ mtrun-exe-Bad image: The application or DLL C:\WINNT\System \MSVCRi40.DLL is not a valid Windows NT image. Please check this against your installation diskette.”

APPENDIX B: VIA Chipset Driver Installation

When loading the VIA drivers for the system, the Windows version should be OSR 2.1 or later or Windows 98 Bata3 or later.

If your system version is Win95 or OSR 2.0, You must use the **USB support update** (make sure the update language is the same with your system language) to upgrade your system to OSR 2.1.

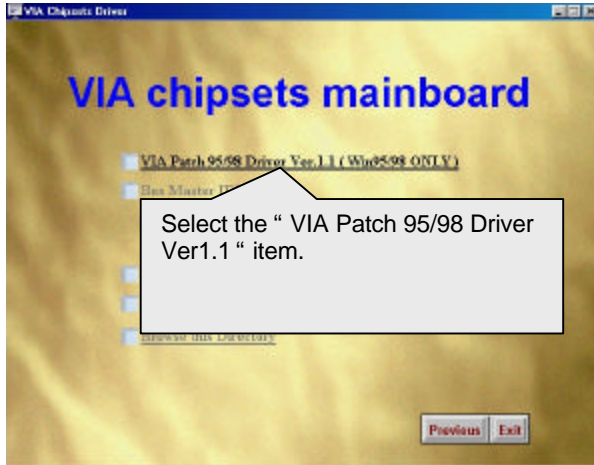
☛ You can find the **USB support update** in the **April 1997 MSDN Disc1\OSR2\USBSUPP**.



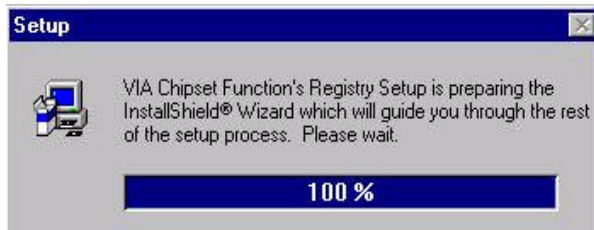
A.1 VIA Patch 95/98 Driver Ver1.1 (Win95/98 ONLY)

Step By Step Installation

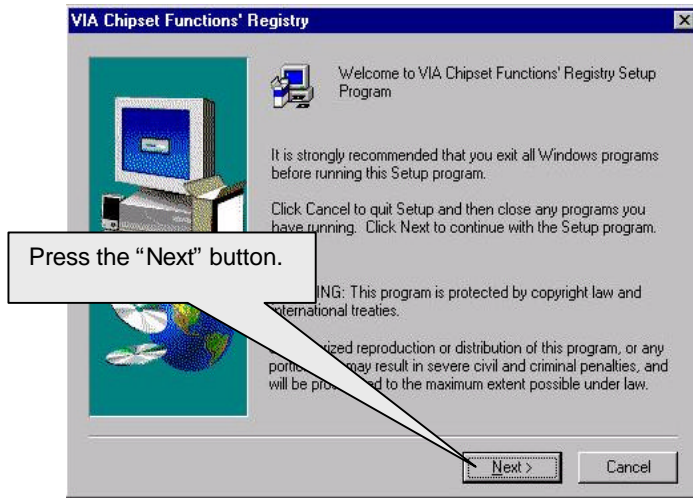
Step 1:



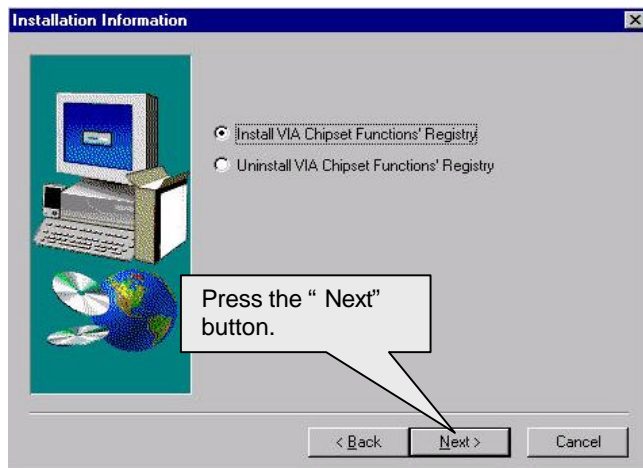
Step 2:



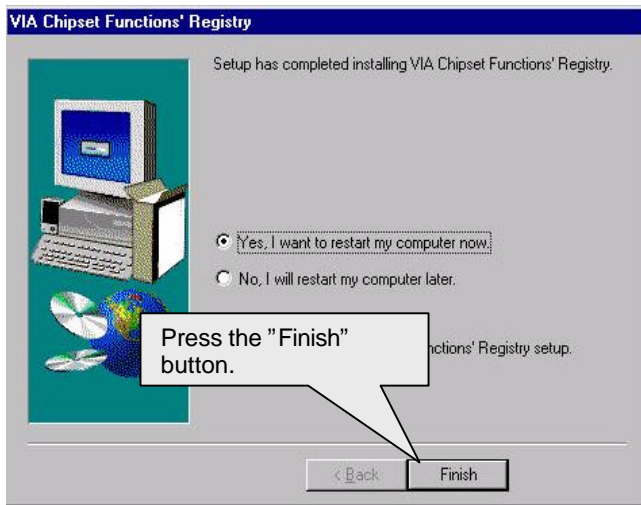
Step 3:



Step 4:



Step 5:



Step 6:

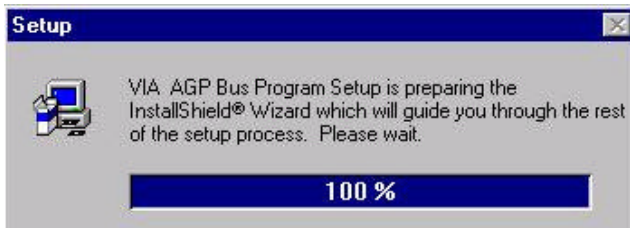
System will restart and start up using the VIA chipset driver.

A.2 VIA AGP Driver Ver.3.2 (Win95/98 ONLY)

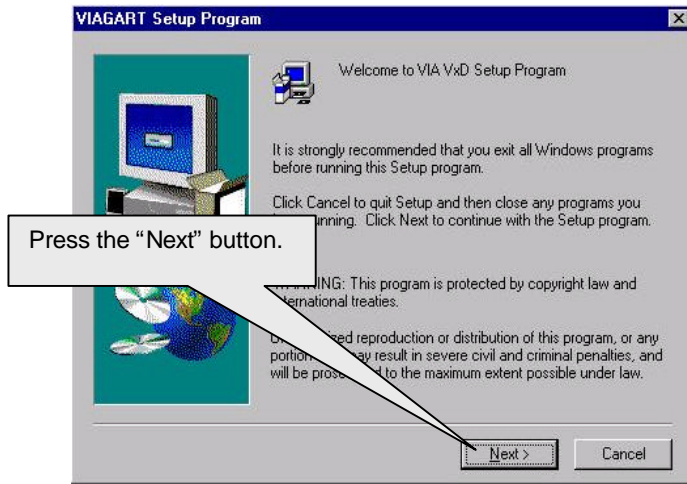
Step 1:



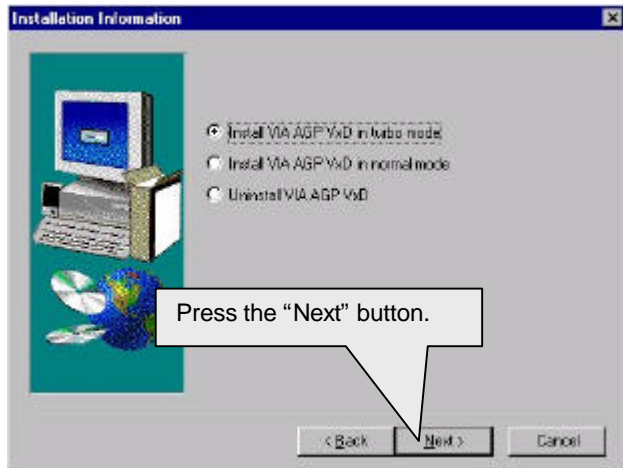
Step 2:



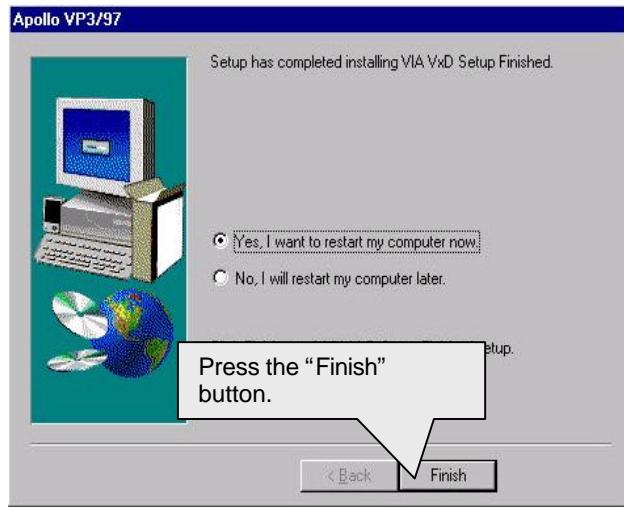
Step 3:



Step 4:



Step 5:

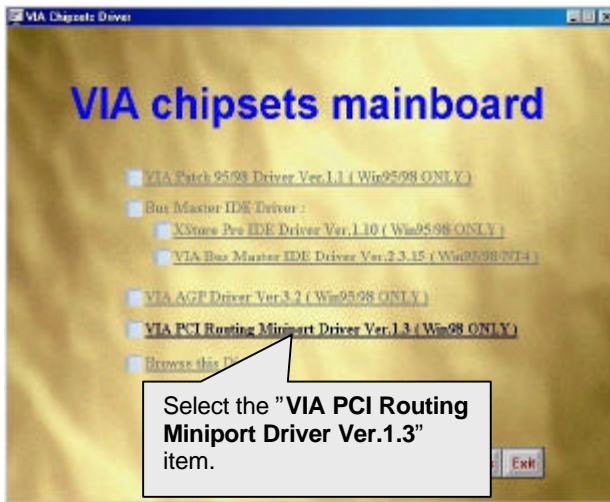


Step 6:

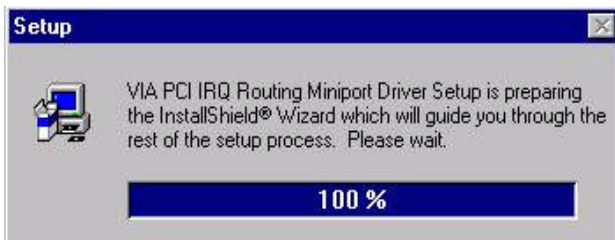
System will restart and start up using the VIA chipset driver.

A.3 VIA PCI Routing Miniport Driver Ver.1.3 (Win98 ONLY)

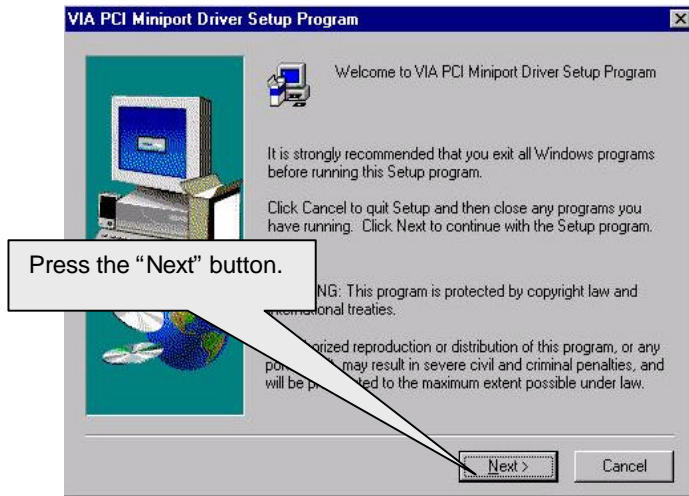
Step 1:



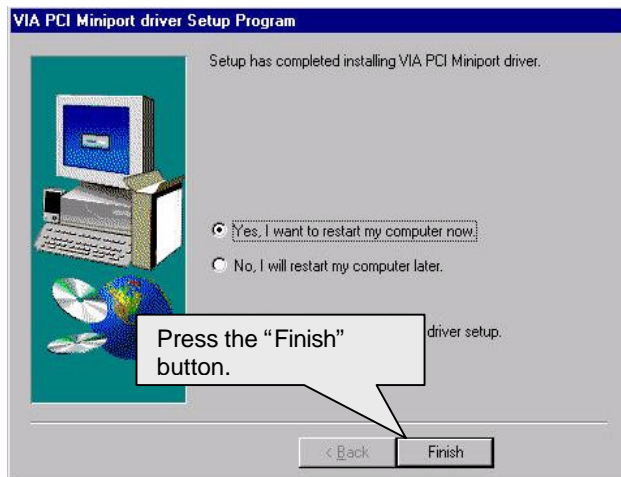
Step 2:



Step 3:



Step 4:

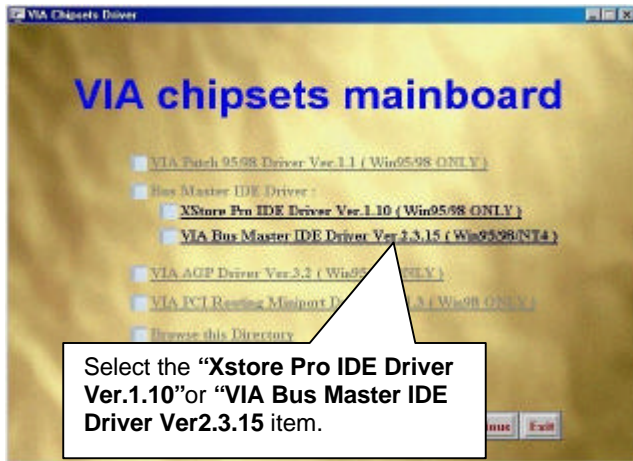


Step 5:

System will restart and start up using the VIA chipset driver.

A.4 Bus Master IDE Driver

We support two kinds of high performance IDE Bus master (Ultra DMA) Drivers. You could install one of them to enable the DMA operation of your hard disk/CD-ROM drives.



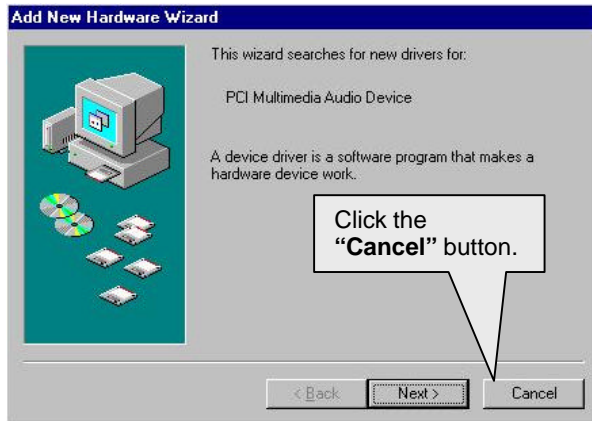
APPENDIX C: Audio Driver Installation

A.1. ESS Solo-1 PCI sound driver installation:

This manual assumes that your CD-ROM device drive letter is D:

When starting Windows 95/98, the operation system will detect that you have a new PCI Multimedia Audio Device, and the **Add New Hardware Wizard** will show up.

STEP 1:



After the system finishes loading. You must insert the **UUCD** Installation CD disk into your CD-ROM, then you can see the AUTORUN window. If it does not show up, please run “D:\Setup.exe”

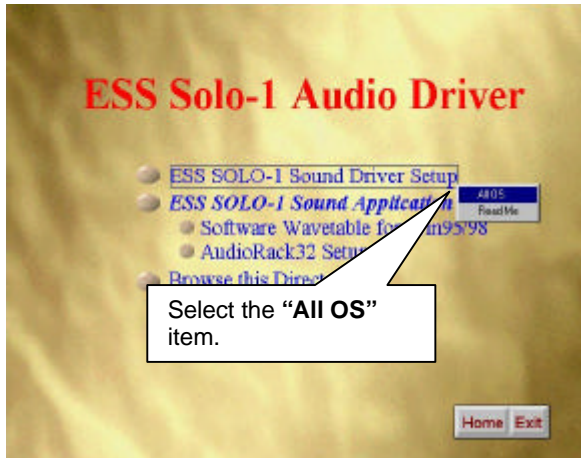
STEP 2:



STEP 3:



STEP 4:

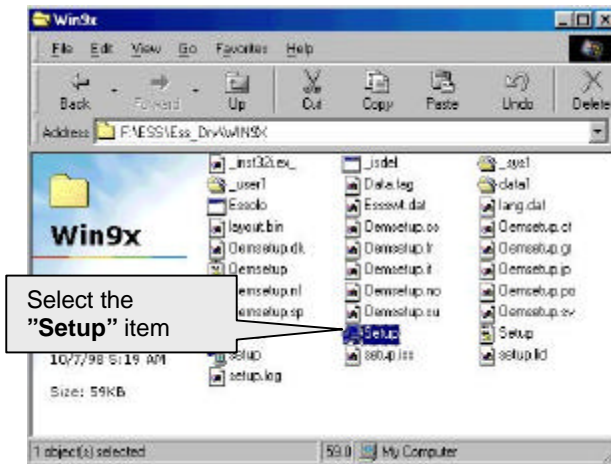


Please select the Operation System you want to install.
(Ex.If you are using windows 98, select the Win9x file folder.
If you are using Windows NT4.0, select the Nt4.0 file folder.)

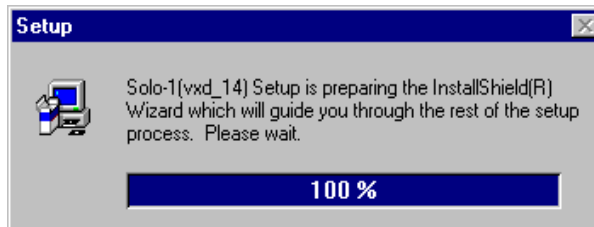
STEP 5:



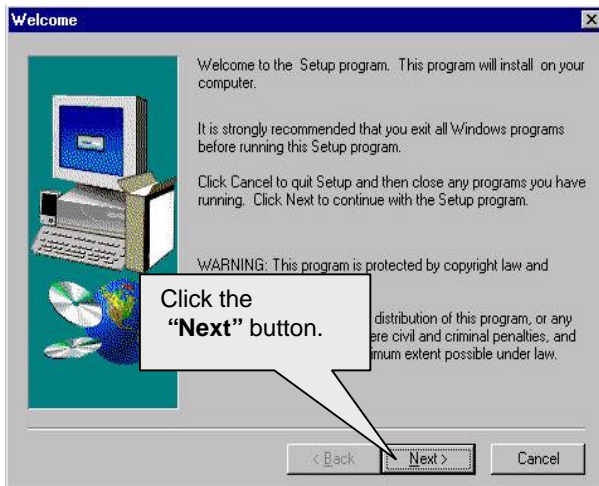
STEP 6:



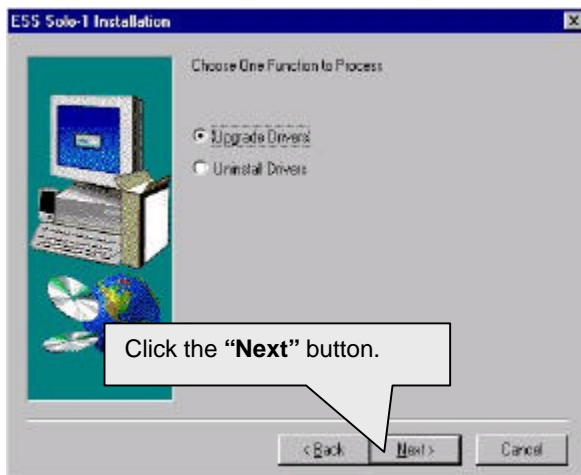
STEP 7:



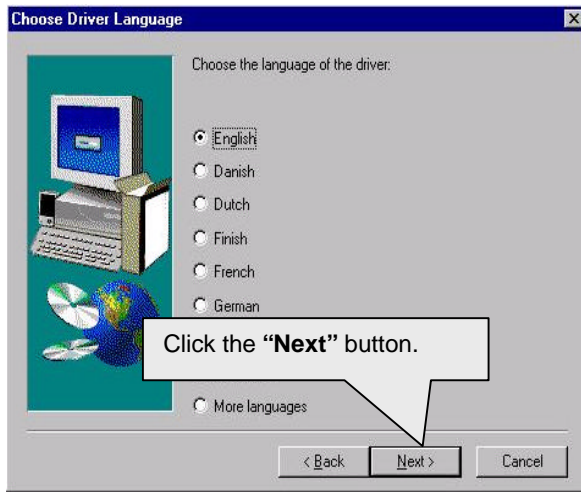
STEP 8:



STEP 9:



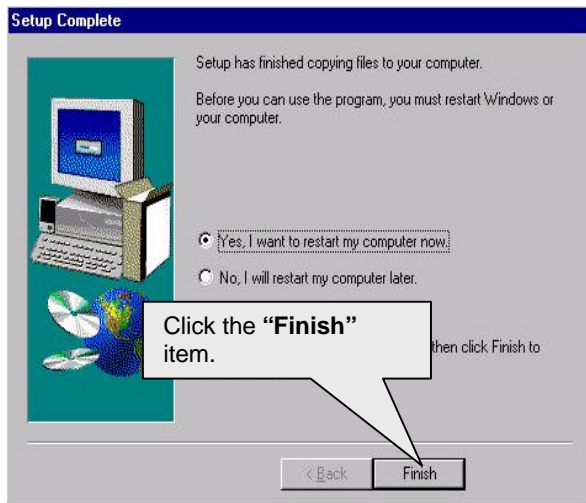
STEP 10:



STEP 11:

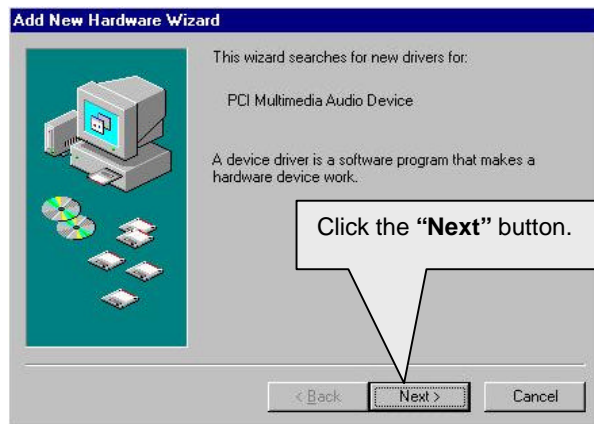


STEP 12:

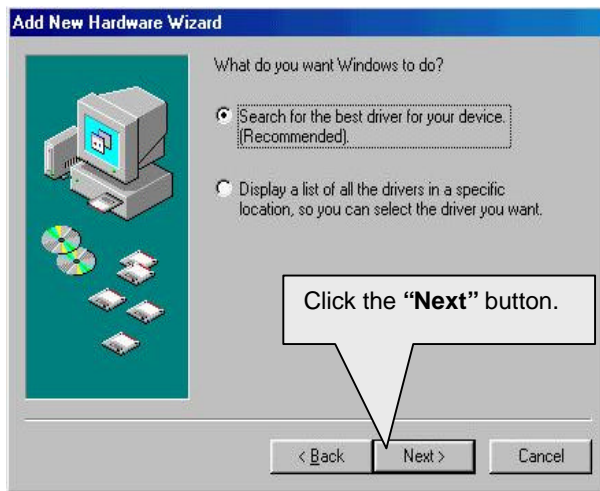


When restarting Windows95/98, the operation system will detect that you have "PCI Multimedia Audio Device", and the **Add New Hardware Wizard** will show up. Please follow the steps below:

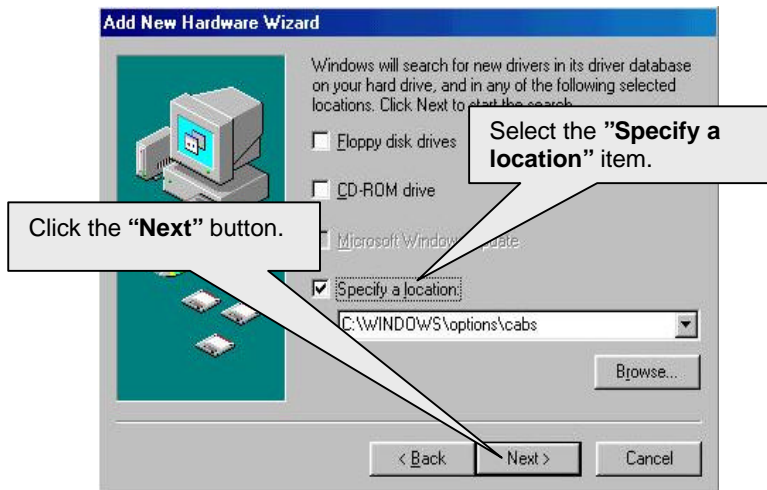
STEP 13:



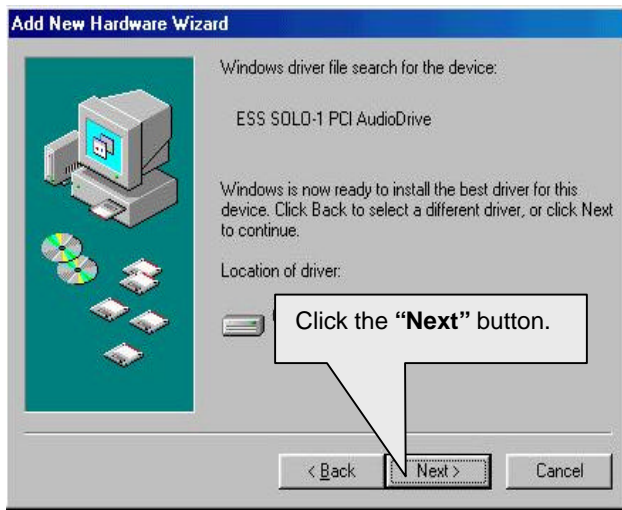
STEP 14:



STEP 15:



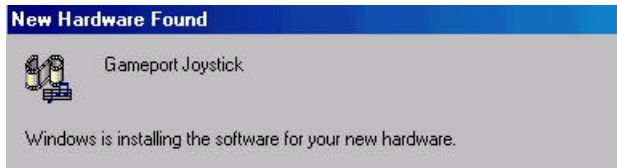
STEP 16:



STEP 17:



STEP 18:

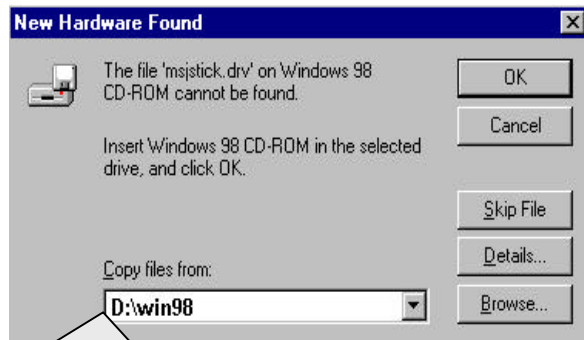


STEP 19:




Click "OK" button

STEP 20:



Please insert Windows 98 CD-ROM and type the path "D:\win98" then click "OK".

Then the sound driver installation is completed.

DECLARATION OF CONFORMITY <small>Per FCC Part 2 Section 2.1077(a)</small>	
	
Responsible Party Name: G.B.T. INC.	
Address: 18365 Valley Blvd., Suite#A LA Puente, CA 91744	
Phone/Fax No: (818) 854-9338 / (818) 854-9339	
hereby declares that the product:	
Product Name: Mother Board	
Model Number: GA-6VM76VMTA	
Conforms to the following specifications:	
FCC Part 15, Subpart B, Section 15.107(a) and Section 15.109(a). Class B Digital Device	
Supplementary Information:	
<small>This device complies with part 15 of the FCC Rules. Operation is subject to the following two conditions: (1) This device may not cause harmful interference, and (2) this device must accept any interference received, including interference that may cause undesired operation.</small>	
Representative Person's Name:	ERIC LU
Signature:	Eric Lu
Date:	Mar. 4, 1999

FCC Compliance Statement:

This equipment has been tested and found to comply with limits for a Class B digital device, pursuant to Part 15 of the FCC rules. These limits are designed to provide reasonable protection against harmful interference in residential installations. This equipment generates, uses, and can radiate radio frequency energy, and if not installed and used in accordance with the instructions, may cause harmful interference to radio communications. However, there is no guarantee that interference will not occur in a particular installation. If this equipment does cause interference to radio or television equipment reception, which can be determined by turning the

equipment off and on, the user is encouraged to try to correct the interference by one or more of the following measures:

- Reorient or relocate the receiving antenna
- Move the equipment away from the receiver
- Plug the equipment into an outlet on a circuit different from that to which the receiver is connected
- Consult the dealer or an experienced radio/television technician for additional suggestions

You are cautioned that any change or modifications to the equipment not expressly approve by the party responsible for compliance could void Your authority to operate such equipment.

This device complies with Part 15 of the FCC Rules. Operation is subjected to the following two conditions 1) this device may not cause harmful interference and 2) this device must accept any interference received, including interference that may cause undesired operation.

Declaration of Conformity

We, Manufacturer/Importer
(full address)

G.B.T. Technology Trading GMBH
Ausschlagler Weg 41, 1F, 20537 Hamburg, Germany

declare that the product
(description of the apparatus, system, installation to which it refers)

Mother Board
GA-6VM7/6VM7A

is in conformity with
(reference to the specification under which conformity is declared)
in accordance with 89/336 EEC-EMC Directive

- | | | | |
|---|--|--|--|
| <input type="checkbox"/> EN 55011 | Limits and methods of measurement of radio disturbance characteristics of industrial, scientific and medical (ISM) high frequency equipment | <input type="checkbox"/> EN 61000-3-2*
<input checked="" type="checkbox"/> EN60555-2 | Disturbances in supply systems caused by household appliances and similar electrical equipment "Harmonics" |
| <input type="checkbox"/> EN55013 | Limits and methods of measurement of radio disturbance characteristics of broadcast receivers and associated equipment | <input type="checkbox"/> EN61000-3-3*
<input checked="" type="checkbox"/> EN60555-3 | Disturbances in supply systems caused by household appliances and similar electrical equipment "Voltage fluctuations" |
| <input type="checkbox"/> EN 55014 | Limits and methods of measurement of radio disturbance characteristics of household electrical appliances, portable tools and similar electrical apparatus | <input checked="" type="checkbox"/> EN 50081-1
<input checked="" type="checkbox"/> EN 50082-1 | Generic emission standard Part 1: Residual, commercial and light industry
Generic immunity standard Part 1: Residual, commercial and light industry |
| <input type="checkbox"/> EN 55015 | Limits and methods of measurement of radio disturbance characteristics of fluorescent lamps and luminaries | <input type="checkbox"/> EN 55081-2 | Generic emission standard Part 2: Industrial environment |
| <input type="checkbox"/> EN 55020 | Immunity from radio interference of broadcast receivers and associated equipment | <input type="checkbox"/> EN 55082-2 | Generic immunity standard Part 2: Industrial environment |
| <input checked="" type="checkbox"/> EN 55022 | Limits and methods of measurement of radio disturbance characteristics of information technology equipment | <input type="checkbox"/> ENV 55104 | Immunity requirements for household appliances tools and similar apparatus |
| <input type="checkbox"/> DIN VDE 0855
<input type="checkbox"/> part 10
<input type="checkbox"/> part 12 | Cabled distribution systems; Equipment for receiving and/or distribution from sound and television signals | <input type="checkbox"/> EN 50091- 2 | EMC requirements for uninterruptible power systems (UPS) |

CE marking



The manufacturer also declares the conformity of above mentioned product with the actual required safety standards in accordance with LVD 73/23 EEC

- | | | | |
|-----------------------------------|---|-------------------------------------|---|
| <input type="checkbox"/> EN 60065 | Safety requirements for mains operated electronic and related apparatus for household and similar general use | <input type="checkbox"/> EN 60950 | Safety for information technology equipment including electrical business equipment |
| <input type="checkbox"/> EN 60335 | Safety of household and similar electrical appliances | <input type="checkbox"/> EN 50091-1 | General and Safety requirements for uninterruptible power systems (UPS) |

Manufacturer/Importer

Signature : Rex Lin

Date : Mar, 4, 1999

Name : Rex Lin

(Stamp)

