

4. BIOS CONFIGURATION

Award's BIOS ROM has a built-in Setup program that allows users to modify the basic system configuration. This type of information is stored in battery-backed CMOS SRAM so that it retains the Setup information when the power is turned off.

4.1. ENTERING SETUP

Power ON the computer and press immediately will allow you to enter Setup. If the message disappears before you respond and you still wish to enter Setup, restart the system to try again by turning it OFF then ON or pressing the "RESET" bottom on the system case. You may also restart by simultaneously press <Ctrl>, <Alt>, and keys.

4.2. CONTROL KEYS

| | |
|-------------|---|
| Up arrow | Move to previous item |
| Down arrow | Move to next item |
| Left arrow | Move to the item in the left hand |
| Right arrow | Move to the item in the right hand |
| Esc key | Main Menu - Quit and not save changes into CMOS Status Page Setup Menu and Option Page Setup Menu - Exit current page and return to Main Menu |
| PgUp key | Increase the numeric value or make changes |
| PgDn key | Decrease the numeric value or make changes |
| F1 key | General help, only for Status Page Setup Menu and Option Page Setup Menu |
| F2 key | Change color from total 16 colors |
| F3 key | Reserved |
| F4 key | Reserved |
| F5 key | Restore the previous CMOS value from CMOS, only for Option Page Setup Menu |
| F6 key | Load the default CMOS value from BIOS default table, only for Option Page Setup Menu |
| F7 key | Load the default |
| F8 key | Reserved |
| F9 key | Reserved |
| F10 key | Save all the CMOS changes, only for Main Menu |

4.3. GETTING HELP

4.3.1. Main Menu

The on-line description of the highlighted setup function is displayed at the bottom of the screen.

4.3.2. Status Page Setup Menu / Option Page Setup Menu

Press F1 to pop up a small help window that describes the appropriate keys to use and the possible selections for the highlighted item. To exit the Help Window press <Esc>.

4.4. THE MAIN MENU

Once you enter Award BIOS CMOS Setup Utility, the Main Menu (Figure 4.1) will appear on the screen. The Main Menu allows you to select from nine setup functions and two exit choices. Use arrow keys to select among the items and press <Enter> to accept or enter the sub-menu.



Figure 4.1: Main Menu

- Standard CMOS setup
This setup page includes all the items in standard compatible BIOS.
- BIOS features setup
This setup page includes all the items of Award special enhanced features.

- Chipset features setup
This setup page includes all the items of chipset special features.
- Power management setup
This setup page includes all the items of Green function features.
- PNP/PCI configuration
This setup page includes all the configurations of PCI & PnP ISA resources.
- Load BIOS defaults
Bios Defaults indicates the value of the system parameters which the system would be in safe configuration.
- Load Performance defaults
Performance Defaults indicates the value of the system parameters which the system would be in best performance configuration.
- Integrated peripherals
This setup page includes all onboard peripherals.
- Supervisor password
Change, set, or disable password. It allows you to limit access to the system and Setup, or just to Setup.
- User password
Change, set, or disable password. It allows you to limit access to the system.
- IDE HDD auto detection
Automatically configure hard disk parameters.
- Save & exit setup
Save CMOS value settings to CMOS and exit setup.
- Exit without saving
Abandon all CMOS value changes and exit setup.

4.5. STANDARD CMOS SETUP MENU

The items in Standard CMOS Setup Menu (Figure 4.2) are divided into 9 categories. Each category includes no, one or more than one setup items. Use the arrows to highlight the item and then use the <PgUp> or <PgDn> keys to select the value you want in each item.



Figure 4.2: Standard CMOS Setup Menu

- Date

The date format is <day>, <month> <date> <year>.

| | |
|-------|--|
| day | The day, from Sun to Sat, determined by the BIOS and is display-only |
| month | The month, Jan. Through Dec. |
| date | The date, from 1 to 31 (or the maximum allowed in the month) |
| year | The year, from 1994 through 2079 |

- Time

The times format in <hour> <minute> <second>. The time is calculated base on the 24-hour military-time clock. For example, 1 p.m. is 13:00:00.

- Primary HDDs / Secondary HDDs

The category identifies the types of hard disk from drive C to F that has been installed in the computer. There are two types: auto type, and user definable type. User type is user-definable; Auto type which will automatically detect HDD type.

Note that the specifications of your drive must match with the drive table. The hard disk will not work properly if you enter improper information for this category.

If you select User Type, related information will be asked to enter to the following items. Enter the information directly from the keyboard and press <Enter>. Such information should be provided in the documentation form your hard disk vendor or the system manufacturer.

| | |
|----------|---------------------|
| CYLS. | Number of cylinders |
| HEADS | number of heads |
| PRECOMP | write precomp |
| LANDZONE | Landing zone |
| SECTORS | number of sectors |

If a hard disk has not been installed select NONE and press <Enter>.

- Drive A type / Drive B type

The category identifies the types of floppy disk drive A or drive B that has been installed in the computer.

| | |
|----------------|---|
| None | No floppy drive installed |
| 360K, 5.25 in. | 5.25 inch PC-type standard drive; 360K byte capacity. |
| 1.2M, 5.25 in. | 5.25 inch AT-type high-density drive; 1.2M byte capacity (3.5 inch when 3 Mode is Enabled). |
| 720K, 3.5 in. | 3.5 inch double-sided drive; 720K byte capacity |
| 1.44M, 3.5 in. | 3.5 inch double-sided drive; 1.44M byte capacity. |
| 2.88M, 3.5 in. | 3.5 inch double-sided drive; 2.88M byte capacity. |

- Floppy 3 Mode Support (for Japan Area)

| | |
|----------|---------------------------------------|
| Disabled | Normal Floppy Drive. |
| Drive A | Drive A is 3 mode Floppy Drive. |
| Drive B | Drive B is 3 mode Floppy Drive. |
| Both | Drive A & B are 3 mode Floppy Drives. |

- Video

The category detects the type of adapter used for the primary system monitor that must match your video display card and monitor. Although secondary monitors are supported, you do not have to select the type in setup.

| | |
|---------|---|
| EGA/VGA | Enhanced Graphics Adapter/Video Graphics Array. For EGA, VGA, SVGA, or PGA monitor adapters |
| CGA 40 | Color Graphics Adapter, power up in 40 column mode |
| CGA 80 | Color Graphics Adapter, power up in 80 column mode |
| MONO | Monochrome adapter, includes high resolution monochrome adapters |

- Halt on

The category determines whether the computer will stop if an error is detected during power up.

| | |
|-------------------|---|
| NO Errors | The system boot will not stop for any error that may be detected and you will be prompted |
| All Errors | Whenever the BIOS detects a non-fatal error the system will be stopped |
| All, But Keyboard | The system boot will not stop for a keyboard error; it will stop for all other errors |
| All, But Diskette | The system boot will not stop for a disk error; it will stop for all other errors |
| All, But Disk/Key | The system boot will not stop for a keyboard or disk error; it will stop for all other errors |

- **Memory**

The category is display-only which is determined by POST (Power On Self Test) of the BIOS.

Base Memory

The POST of the BIOS will determine the amount of base (or conventional) memory installed in the system.

The value of the base memory is typically 512 K for systems with 512 K memory installed on the motherboard, or 640 K for systems with 640 K or more memory installed on the motherboard.

Extended Memory

The BIOS determines how much extended memory is present during the POST.

This is the amount of memory located above 1 MB in the CPU's memory address map.

Expanded Memory

Expanded Memory in memory defined by the Lotus / Intel / Microsoft (LIM) standard as EMS.

Many standard DOS applications can not utilize memory above 640 K; the Expanded Memory Specification (EMS) swaps memory, which not utilized by DOS with a section, or frame, so these applications, can access all of the system memory.

Memory can be swapped by EMS is usually 64 K within 1 MB or memory above 1 MB, depends on the chipset design.

Expanded memory device driver is required to use memory as Expanded Memory.

Other Memory

This refers to the memory located in the 640 K to 1024 K address space. This is memory that can be used for different applications.

DOS uses this area to load device drivers to keep as much base memory free for application programs. Most use for this area is Shadow RAM.

4.6. BIOS FEATURES SETUP



Figure 4.3: BIOS Features Setup

- Virus Warning

If it is set to enable, the category will flash on the screen when there is any attempt to write to the boot sector or partition table of the hard disk drive. The system will halt and the following error message will appear in the mean time. You can run anti-virus program to locate the problem.

Default value is Disabled.

| | |
|----------|---|
| Enabled | Activate automatically when the system boots up causing a warning message to appear when anything attempts to access the boot sector or hard disk partition table |
| Disabled | No warning message to appear when anything attempts to access the boot sector or hard disk partition table |

- CPU Internal Cache / External Cache

These two categories speed up memory access. However, it depends on CPU / chipset design. The default value is Enabled.

| | |
|----------|---------------|
| Enabled | Enable cache |
| Disabled | Disable cache |

- CPU L2 Cache ECC Checking

The default value is Enabled.

| | |
|----------|-----------------------------------|
| Enabled | Enable CPU L2 Cache ECC Checking |
| Disabled | Disable CPU L2 Cache ECC Checking |

- Quick Power On Self Test

This category speeds up Power On Self Test (POST) after you power on the computer. If it is set to Enable, BIOS will shorten or skip some check items during POST.

The default value is Enabled.

| | |
|----------|-------------------|
| Enabled | Enable quick POST |
| Disabled | Normal POST |

- Boot From LAN First

The default value is Enabled.

| | |
|----------|-------------------------------------|
| Auto | Enable Boot From LAN First Function |
| Enabled | Enable Boot From LAN First |
| Disabled | Disable Boot From LAN First |

☞ You can set "Auto" or "Enabled" to boot from LAN first.

- Boot Sequence

This category determines which drive computer searches first for the disk operating system (i.e., DOS). Default value is A, C, SCSI.

| | |
|------------|---|
| X1, X2, X3 | System will first search for X1 disk drive then X2 disk drive and then X3 disk drive. |
|------------|---|

- Swap Floppy Drive

The default value is Disabled.

| | |
|----------|--|
| Enabled | Floppy A & B will be swapped under DOS |
| Disabled | Floppy A & B will be normal definition |

- VGA Boot From

The default value is PCI Slot

| | |
|----------|---|
| AGP | System will boot from AGP Display Card |
| PCI Slot | System will boot from PCI Slot VGA Card |

- Boot Up Floppy Seek

During POST, BIOS will determine the floppy disk drive installed is 40 or 80 tracks. 360 K type is 40 tracks 720 K, 1.2 M and 1.44 M are all 80 tracks. The default value is Enabled.

| | |
|----------|--|
| Enabled | BIOS searches for floppy disk drive to determine it is 40 or 80 tracks. Note that BIOS can not tell from 720 K, 1.2 M or 1.44 M drive type as they are all 80 tracks |
| Disabled | BIOS will not search for the type of floppy disk drive by track number. Note that there will not be any warning message if the drive installed is 360 K |

- Boot Up NumLock Status

The default value is On.

| | |
|-----|-----------------------|
| On | Keypad is number keys |
| Off | Keypad is arrow keys |

- Memory Parity/ECC Check

The default value is Disabled.

| | |
|----------|-----------------------------------|
| Enabled | Enabled Memory Parity/ECC Check. |
| Disabled | Disabled Memory Parity/ECC Check. |

- Typematic Rate Setting

The default value is Disabled.

| | |
|----------|--|
| Enabled | Enable Keyboard Typematic rate setting. |
| Disabled | Disable Keyboard Typematic rate setting. |

- Typematic Rate (Chars / Sec.)

The default value is 6.

| | |
|------|---|
| 6-30 | Set the maximum Typematic rate from 6 chars. Per second to 30 characters. Per second. |
|------|---|

- Typematic Delay (Msec.)

The default value is 250.

| | |
|----------|--|
| 250-1000 | Set the time delay from first key to repeat the same key in to computer. |
|----------|--|

- Security Option

This category allows you to limit access to the system and Setup, or just to Setup. The default value is Setup.

| | |
|--------|--|
| System | The system can not boot and can not access to Setup page will be denied if the correct password is not entered at the prompt |
| Setup | The system will boot, but access to Setup will be denied if the correct password is not entered at the prompt |

- PCI/VGA Palette Snoop

The default value is Disabled.

| | |
|----------|---|
| Enabled | For having Video Card on ISA Bus and VGA Card on PCI Bus. |
| Disabled | For VGA Card only. |

- Assign IRQ For VGA

The default value is Enabled.

| | |
|----------|------------------------|
| Enabled | Assign IRQ For VGA |
| Disabled | Not assign IRQ For VGA |

- OS Select For DRAM>64MB

The default value is Non-OS2.

| | |
|---------|---|
| Non-OS2 | Using non-OS2 operating system. |
| OS2 | Using OS2 operating system and DRAM>64MB. |

- HDD S.M.A.R.T. Capability

The default value is Disabled.

| | |
|----------|------------------------------------|
| Enabled | Enabled HDD S.M.A.R.T. Capability |
| Disabled | Disabled HDD S.M.A.R.T. Capability |

- Report No FDD For WIN 95

The default value is No.

| | |
|-----|--------------------------------|
| No | Assign IRQ6 For FDD. |
| Yes | FDD Detect IRQ6 Automatically. |

- Video BIOS Shadow

The default value is Enabled.

| | |
|----------|--------------------------|
| Enabled | Video shadow is enabled |
| Disabled | Video shadow is disabled |

4.7. CHIPSET FEATURES SETUP

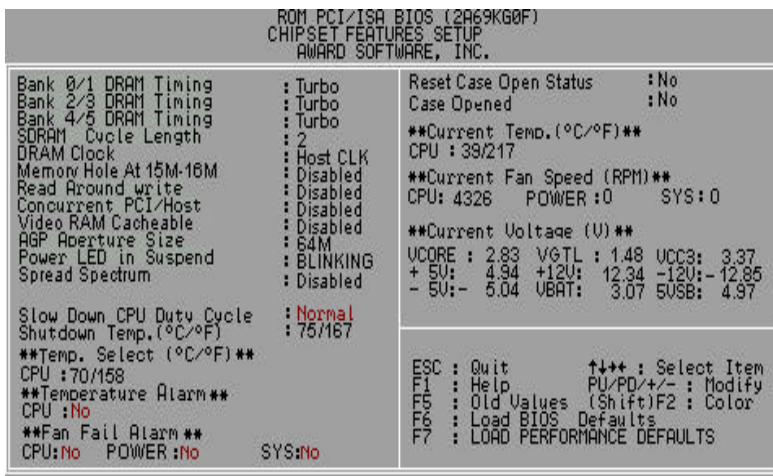


Figure 4.4: Chipset Features Setup

- Bank 0/1, 2/3 , 4/5 DRAM Timing

The default value is Turbo.

| | |
|------------|---------------------------------------|
| Turbo | For Turbo DRAM timing operation. |
| SDRAM 10ns | For SDRAM 10ns DRAM timing operation. |

- SDRAM Cycle Length

The default value is 2.

| | |
|---|--------------------------------|
| 3 | For Slower SDRAM DIMM module. |
| 2 | For Fastest SDRAM DIMM module. |

- DRAM Clock

The default value is Host CLK.

| | |
|----------|-----------------------------|
| Host CLK | Set DRAM Clock to Host CLK. |
| 66 MHz | Set DRAM Clock to 66 MHz. |

- Memory Hole At 15M-16M

The default value is Disabled.

| | |
|----------|---------------------------------------|
| Disabled | Normal Setting. |
| 15M-16M | Set Address=15~16MB remap to ISA BUS. |

- Read Around write

The default value is Disabled.

| | |
|----------|--|
| Enabled | When set Enabled this feature speeds up data read performance. |
| Disabled | Normal operation. |

- Concurrent PCI/Host

The default value is Disabled.

| | |
|----------|-------------------------------|
| Enabled | Enabled Concurrent PCI/Host. |
| Disabled | Disabled Concurrent PCI/Host. |

- Video RAM Cacheable

The default value is Disabled.

| | |
|----------|---|
| Disabled | Disable this function. |
| Enabled | Enable this function to get better VGA performance; while some brands of VGA must be disabled this function (e.g.ET4000W32P). |

- AGP Aperture Size

The default value is 64MB.

| | |
|-------|---------------------------------|
| 4MB | Set AGP Aperture Size to 4MB. |
| 8MB | Set AGP Aperture Size to 8MB. |
| 16MB | Set AGP Aperture Size to 16MB. |
| 32MB | Set AGP Aperture Size to 32MB. |
| 64MB | Set AGP Aperture Size to 64MB. |
| 128MB | Set AGP Aperture Size to 128MB. |

- Power LED In Suspend

The default value is BLINKING.

| | |
|-----------|---------------------------------------|
| OFF/ DUAL | Set Power LED In Suspend to OFF/DUAL. |
| ON | Set Power LED In Suspend to ON. |
| BLINKING | Set Power LED In Suspend to BLINKING. |

- Spread Spectrum

The default value is Disabled.

| | |
|----------|-------------------------------|
| Disabled | Disabled this function |
| Enabled | Enabled Clock Spread Spectrum |

- Slow Down CPU Duty Cycle (Optional)

The default value is Normal.

| Normal | Normal Operation |
|-------------|--|
| 12.5%~75.0% | Monitor CPU Temp. will cause system slow down CPU Duty Cycle to 12.5%~75.0%. |

- Shutdown Temp. (°C / °F) (Optional)

(This function will be effective only for the operating systems that support ACPI Function.)

The default value is 75°C / 167°F

| Disabled | Normal Operation |
|--------------|--|
| 65°C / 149°F | Monitor CPU Temp. at 65°C / 149°F, if Temp. > 65°C / 149°F system will automatically power off . |
| 70°C / 158°F | Monitor CPU Temp. at 70°C / 158°F, if Temp. > 70°C / 158°F system will automatically power off . |
| 75°C / 167°F | Monitor CPU Temp. at 75°C / 167°F, if Temp. > 75°C / 167°F system will automatically power off . |
| 80°C / 176°F | Monitor CPU Temp. at 80°C / 176°F, if Temp. > 80°C / 176°F system will automatically power off . |
| 85°C / 185°F | Monitor CPU Temp. at 85°C / 185°F, if Temp. > 85°C / 185°F system will automatically power off . |
| 90°C / 194°F | Monitor CPU Temp. at 90°C / 194°F, if Temp. > 90°C / 194°F system will automatically power off . |
| 95°C / 203°F | Monitor CPU Temp. at 95°C / 203°F, if Temp. > 95°C / 203°F system will automatically power off . |

- Temp. Select (°C / °F) (Optional)

The default value is 70°C / 158°F

| | |
|--------------|-----------------------------------|
| 65°C / 149°F | Monitor CPU Temp. at 65°C / 149°F |
| 70°C / 158°F | Monitor CPU Temp. at 70°C / 158°F |
| 75°C / 167°F | Monitor CPU Temp. at 75°C / 167°F |
| 80°C / 176°F | Monitor CPU Temp. at 80°C / 176°F |
| 85°C / 185°F | Monitor CPU Temp. at 85°C / 185°F |
| 90°C / 194°F | Monitor CPU Temp. at 90°C / 194°F |
| 95°C / 203°F | Monitor CPU Temp. at 95°C / 203°F |

- Temperature Alarm (Optional)

The default value is No

| | |
|-----|---|
| No | When CPU Temp. overheat, then system won't alarm. |
| Yes | When CPU Temp. overheat, then system will alarm. |

- Fan Fail Alarm (Optional)

CPU/POWER/SYS.

| | |
|-----|-----------------------------------|
| No | Fan Fail Alarm Function Disabled. |
| Yes | Fan Fail Alarm Function Enabled. |

- Reset Case Open Status (Optional)

- Case Opened (Optional)

If the case is closed, "Case Opened" will show "No".

If the case have been opened, "Case Opened" will show "Yes" .

If you want to reset "Case Opened" value, set "Reset Case Open Status" to "Yes" and save CMOS, your computer will restart.

- Current Temp. (°C / °F) (Optional)

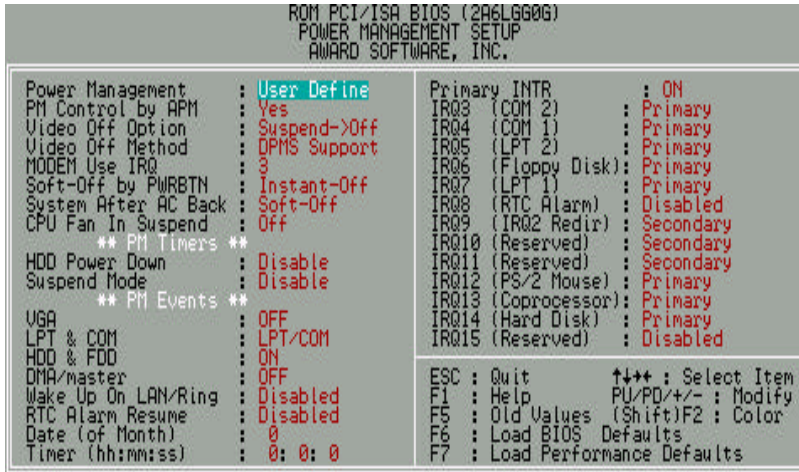
Detect Temp. automatically.

- Current FAN Speed (RPM) (Optional)

Detect Fan speed status automatically.

- Current Voltage (v) V_{CORE} / V_{GTL} / V_{CC3} / ±12V / ±5V / V_{BAT} / V_{SVB} (Optional)

Detect system's voltage status automatically.



4.8. POWER MANAGEMENT SETUP

Figure 4.5: Power Management Setup

* These two items will show up when “RTC Alarm Resume ” is enabled.

- Power Management

The default value is User Define.

| | |
|-------------|---------------------------------------|
| User Define | Set Power Management to User Define . |
| Min Saving | Set Power Management to Min Saving . |
| Max Saving | Set Power Management to Max Saving . |

- PM Control by APM

The default value is Yes.

| | |
|-------|--------------------------------|
| * Yes | Enable software APM function. |
| * No | Disable software APM function. |

- Video Off Option

The default value is Suspend->Off.

| | |
|----------------|---|
| Suspend->Off | Set Video Off Option to Suspend->Off. |
| All Modes->Off | Set Video Off Option to All Modes->Off. |
| Always On | Set Video Off Option to Always On. |

- Video off Method

The default value is DPMS Support.

| | |
|----------------|--|
| V/H SYNC+Blank | BIOS will turn off V/H-SYNC when gets into Green mode for Green monitor power saving. |
| Blank Screen | BIOS will only black monitor when gets into Green mode. |
| DPMS Support | BIOS will use DPMS Standard to control VGA card. (The Green type VGA card will turn off V/H-SYNC automatically.) |

- MODEM Use IRQ

The default value is 3.

| | |
|----|--------------------------|
| NA | Set MODEM Use IRQ to NA. |
| 3 | Set MODEM Use IRQ to 3. |
| 4 | Set MODEM Use IRQ to 4. |
| 5 | Set MODEM Use IRQ to 5. |
| 7 | Set MODEM Use IRQ to 7. |
| 9 | Set MODEM Use IRQ to 9. |
| 10 | Set MODEM Use IRQ to 10. |
| 11 | Set MODEM Use IRQ to 11. |

- Soft-off by PWRBTN

The default value is Instant-Off.

| | |
|--------------|-------------------------------------|
| Instant-off | Soft switch ON/OFF for POWER ON/OFF |
| Delay 4 Sec. | Soft switch ON 4sec. for POWER OFF. |

- System After AC Back

The default value is Soft-Off.

| | |
|----------|--|
| Memory | This function depends on computer status |
| Soft-Off | Set System Soft-Off Status. |
| Full-On | Set System Full-On Status. |

- CPU FAN In Suspend

The default value is Off.

| | |
|-----|--|
| Off | Disabled this function. |
| On | Stop CPU FAN when entering Suspend mode. |

- HDD Power Down

The default value is Disable.

| | |
|------------|--|
| Disable | Disable HDD Power Down mode function. |
| 1-15 mins. | Enable HDD Power Down mode between 1 to 15 mins. |

- Suspend Mode

The default value is Disable.

| | |
|-----------------|--|
| Disable | Disable Suspend Mode. |
| 10 Sec - 1 Hour | Setup the timer to enter Suspend Mode. |

- VGA

The default value is OFF.

| | |
|-----|-------------------------------|
| OFF | Disable monitor VGA activity. |
| ON | Enable monitor VGA activity. |

- LPT & COM

The default value is LPT/COM.

| | |
|---------|---------------------------------|
| LPT/COM | Enabled LPT/COM Ports Activity. |
| NONE | Normal Operation. |
| LPT | Enabled LPT Ports Activity. |

| | |
|-----|-----------------------------|
| COM | Enabled COM Ports Activity. |
|-----|-----------------------------|

- HDD & FDD

The default value is ON.

| | |
|-----|-----------------------------------|
| ON | Enabled HDD & FDD Ports Activity |
| OFF | Disabled HDD & FDD Ports Activity |

- DMA/master

The default value is OFF.

| | |
|-----|-----------------------------------|
| ON | Don't detect DMA/master PM event. |
| OFF | Normal Operation. |

- Wake Up On LAN/Ring

The default value is Disabled.

| | |
|----------|------------------------------|
| Disabled | Disabled this function. |
| Enabled | Enabled Wake Up On LAN/Ring. |

- RTC Alarm Resume

The default value is Disabled.

| | |
|----------|---|
| Disabled | Disable this function. |
| Enabled | Enable alarm function to POWER ON system. |

If the "RTC Alarm Resume" is Enabled.

| | |
|----------------------------|--------------------------|
| Date (of Month) Alarm : | 0~31 |
| Time (hh: mm: ss) Alarm : | (0~23) : (0~59) : (0~59) |

- Primary INTR

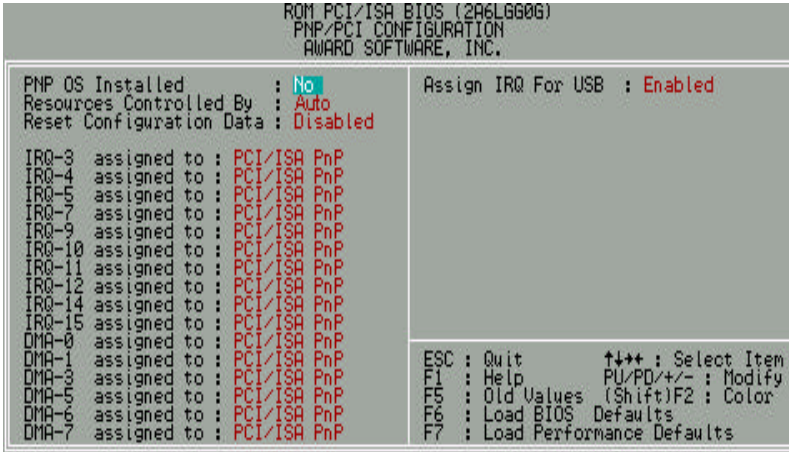
The default value is ON.

| | |
|-----|--------------------------------|
| OFF | Disable this function. |
| ON | Enabled Primary INTR Function. |

- IRQ [3-7,9-15]

The default value is Primary/Secondary/Disabled.

| | |
|-----------|--|
| Disabled | Disable this function. |
| Primary | The resource is used by Primary device . |
| Secondary | The resource is used by Secondary device . |



4.9. PNP/PCI CONFIGURATION

Figure 4.6: PCI Slot Configuration

- IRQ[3.4.5.7.9.10.11.12.14.15] & DMA[1.3.5.6.7] These items will show up when “Resources Controlled By” is Manual.

- PNP OS Installed

The default value is No.

| | |
|-----|------------------------------------|
| Yes | Enable PNP OS Installed function. |
| No | Disable PNP OS Installed function. |

- Resources Controlled by

The default value is Auto.

| | |
|--------|--|
| Manual | User can set the PnP resource (I/O Address, IRQ & DMA channels) used by legacy ISA DEVICE. |
| Auto | BIOS automatically use these PnP rescuers. |

- Reset Configuration Data

The default value is Disabled.

| | |
|----------|---------------------------------------|
| Disabled | Disable this function. |
| Enabled | Enable clear PnP information in ESCD. |

- IRQ (7,12,14,15) & IRQ (3,4,5,9,10,11,DMA(0,1,3,5,6,7)) assigned to

The default value is PCI/ISA PnP.

| | |
|-------------|--|
| Legacy ISA | The resource is used by Legacy ISA device. |
| PCI/ISA PnP | The resource is used by PCI/ISA PnP device (PCI or ISA). |

- Assign IRQ For USB

The default value is Enabled.

| | |
|----------|-------------------------------|
| Enabled | Assign a specific IRQ for USB |
| Disabled | No IRQ is assigned for USB |

4.10. LOAD BIOS DEFAULTS

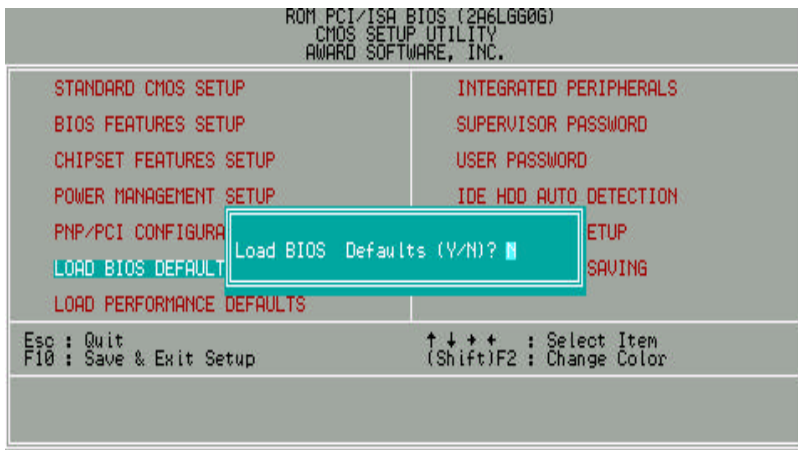


Figure 4.7: Load Bios Defaults

- Load BIOS Defaults

To load BIOS defaults value to CMOS SRAM, enter "Y". If not, enter "N".

4.11. LOAD PERFORMANCE DEFAULTS

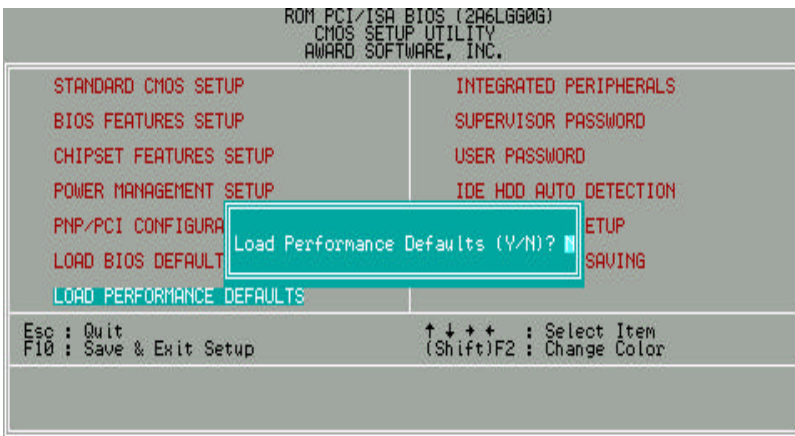
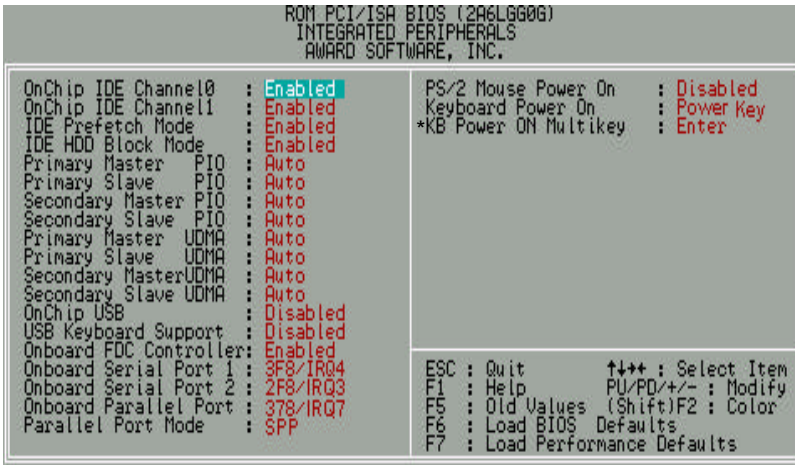


Figure 4.8: Load Performance Defaults

- Load Performance Defaults

To load Performance defaults value to CMOS SRAM, enter "Y". If not, enter "N".



4.12. INTEGRATED PERIPHERALS

Figure 4.9: Integrated Peripherals

* This item will show up when “Keyboard Power On: Multikey” is selected.

** This item will show up when “OnChip USB: Enabled” is selected.

- OnChip IDE Channel 0

The default value is Enabled.

| | |
|----------|--|
| Enabled | Enabled onboard 1st channel IDE port. |
| Disabled | Disabled onboard 1st channel IDE port. |

- * OnChip IDE Channel 1

The default value is Enabled.

| | |
|----------|--|
| Enabled | Enabled onboard 1st channel IDE port. |
| Disabled | Disabled onboard 1st channel IDE port. |

- IDE Prefetch Mode

The default value is Enabled.

| | |
|----------|----------------------------|
| Enabled | Enabled IDE Prefetch Mode |
| Disabled | Disabled IDE Prefetch Mode |

- IDE HDD Block Mode

The default value is Enabled.

| | |
|----------|----------------------------|
| Enabled | Enable IDE HDD Block Mode |
| Disabled | Disable IDE HDD Block Mode |

- Primary Master PIO (for onboard IDE 1st channel).

The default value is Auto.

| | |
|---------|--|
| Auto | BIOS will automatically detect the IDE HDD Accessing mode. |
| Mode0~4 | Manually set the IDE Accessing mode. |

- Primary Slave PIO (for onboard IDE 1st channel).

The default value is Auto.

| | |
|---------|--|
| Auto | BIOS will automatically detect the IDE HDD Accessing mode. |
| Mode0~4 | Manually set the IDE Accessing mode. |

- Secondary Master PIO (for onboard IDE 2nd channel).

The default value is Auto.

| | |
|---------|--|
| Auto | BIOS will automatically detect the IDE HDD Accessing mode. |
| Mode0~4 | Manually set the IDE Accessing mode. |

- Secondary Slave PIO (for onboard IDE 2nd channel).

The default value is Auto.

| | |
|---------|--|
| Auto | BIOS will automatically detect the IDE HDD Accessing mode. |
| Mode0~4 | Manually set the IDE Accessing mode. |

- Primary Master UDMA.

The default value is Auto.

| | |
|----------|--|
| Auto | BIOS will automatically detect the IDE HDD Accessing mode. |
| Disabled | Disable UDMA function. |

- Primary Slave UDMA.

The default value is Auto.

| | |
|----------|--|
| Auto | BIOS will automatically detect the IDE HDD Accessing mode. |
| Disabled | Disable UDMA function. |

- Secondary Master UDMA.

The default value is Auto.

| | |
|----------|--|
| Auto | BIOS will automatically detect the IDE HDD Accessing mode. |
| Disabled | Disable UDMA function. |

- Secondary Slave UDMA.

The default value is Auto.

| | |
|----------|--|
| Auto | BIOS will automatically detect the IDE HDD Accessing mode. |
| Disabled | Disable UDMA function. |

- OnChip USB

The default value is Disabled.

| | |
|----------|---------------------------|
| Enabled | Enabled OnChip USB port. |
| Disabled | Disabled OnChip USB port. |

- USB Keyboard Support

The default value is Disabled.

| | |
|----------|--------------------------------|
| Enabled | Enabled USB Keyboard Support. |
| Disabled | Disabled USB Keyboard Support. |

- Onboard FDC Controller

The default value is Enabled.

| | |
|----------|---------------------------|
| Enabled | Enable onboard FDC port. |
| Disabled | Disable onboard FDC port. |

- Onboard Serial Port 1

The default value is 3F8/IRQ4.

| | |
|----------|---|
| Auto | BIOS will automatically setup the port 1 address. |
| 3F8/IRQ4 | Enable onboard Serial port 1 and address is 3F8. |
| 2F8/IRQ3 | Enable onboard Serial port 1 and address is 2F8. |
| 3E8/IRQ4 | Enable onboard Serial port 1 and address is 3E8. |
| 2E8/IRQ3 | Enable onboard Serial port 1 and address is 2E8. |
| Disabled | Disable onboard Serial port 1. |

- Onboard Serial Port 2

The default value is 2F8/IRQ3.

| | |
|----------|---|
| Auto | BIOS will automatically setup the port 2 address. |
| 3F8/IRQ4 | Enable onboard Serial port 2 and address is 3F8. |
| 2F8/IRQ3 | Enable onboard Serial port 2 and address is 2F8. |
| 3E8/IRQ4 | Enable onboard Serial port 2 and address is 3E8. |
| 2E8/IRQ3 | Enable onboard Serial port 2 and address is 2E8. |
| Disabled | Disable onboard Serial port 2. |

- Onboard Parallel port

The default value is 378/IRQ7.

| | |
|----------|--|
| 378/IRQ7 | Enable onboard LPT port and address is 378/IRQ7. |
| 278/IRQ5 | Enable onboard LPT port and address is 278/IRQ5. |
| Disabled | Disable onboard LPT port. |
| 3BC/IRQ7 | Enable onboard LPT port and address is 3BC/IRQ7. |

- Parallel Port Mode

The default value is SPP.

| | |
|---------|--|
| SPP | Using Parallel port as Standard Printer Port. |
| EPP | Using Parallel port as Enhanced Parallel Port. |
| ECP | Using Parallel port as Extended Capabilities Port. |
| ECP/EPP | Using Parallel port as ECP/EPP mode. |

- PS/2 Mouse Power on

The default value is Disabled.

| | |
|--------------|--|
| Disabled | Disable PS/2 Mouse Power on . |
| Left Double | Click twice on PS/2 mouse left button to Power on system. |
| Right Double | Click twice on PS/2 mouse right button to Power on system. |

- Keyboard Power on

The default value is POWER Key.

| | |
|-----------|--|
| Disabled | Disable Keyboard Power on . |
| Multikey | Enter multikey combination to Power on system. |
| POWER Key | If your keyboard have "POWER Key" button, you can press the key to power on your system. |

- KB Power ON Multikey

| | |
|-------|---|
| Enter | Enter from 1 to 5 characters to set the Keyboard Power On Password. |
|-------|---|

You can power on your system by entering password from the Keyboard after setting the "Keyboard power on" jumper (JP1) and password in CMOS Setup.

4.13. SUPERVISOR / USER PASSWORD

When you select this function, the following message will appear at the center of the screen to assist you in creating a password.

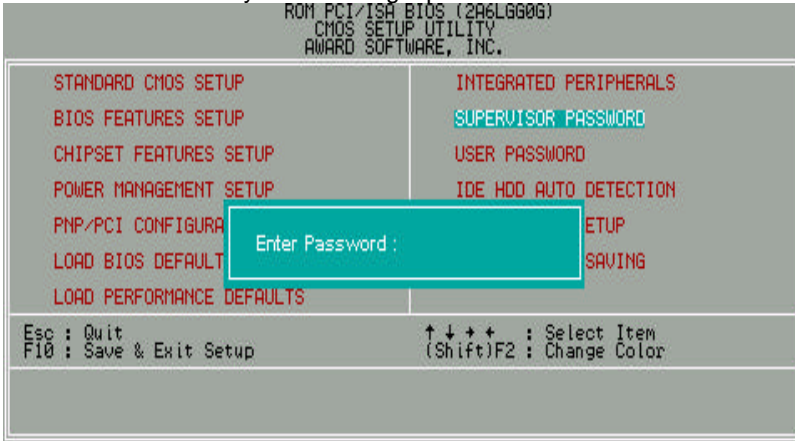


Figure 4.10: Password Setting

Type the password, up to eight characters, and press <Enter>. The password typed now will clear the previously entered password from CMOS memory. You will be asked to confirm the password. Type the password again and press <Enter>. You may also press <Esc> to abort the selection and not enter a password.

To disable password, just press <Enter> when you are prompted to enter password. A message "PASSWORD DISABLED" will appear to confirm the password being disabled. Once the password is disabled, the system will boot and you can enter Setup freely.

If you select System at Security Option in BIOS Features Setup Menu, you will be prompted for the password every time the system is rebooted or any time you try to enter Setup Menu. If you select Setup at Security Option in BIOS Features Setup Menu, you will be prompted only when you try to enter Setup.

4.14. IDE HDD AUTO DETECTION

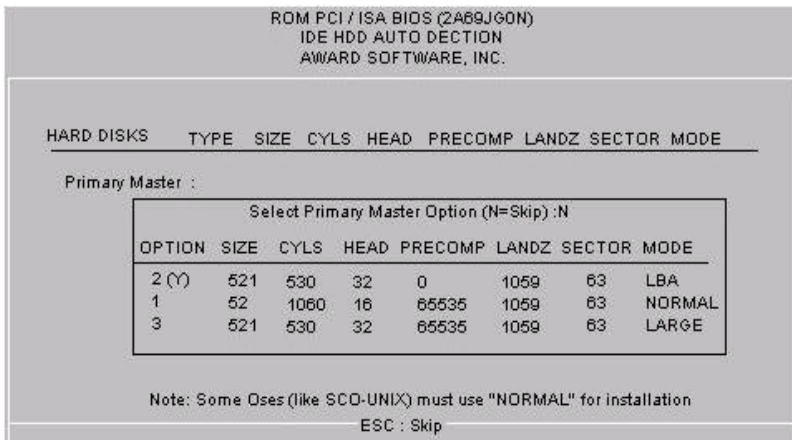
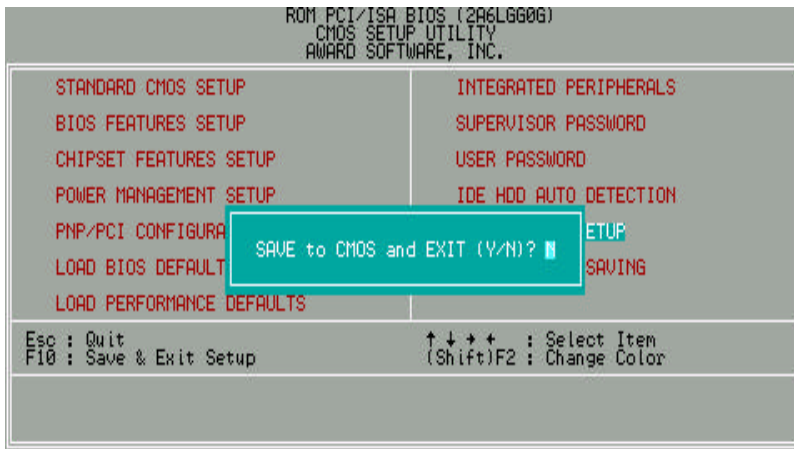


Figure 4.11: IDE HDD Auto Detection

Type "Y" will accept the H.D.D. parameter reported by BIOS.

Type "N" will keep the old H.D.D. parameter setup. If the hard disk cylinder number is over 1024, then the user can select LBA mode or LARGER mode for DOS partition larger than 528 MB.



4.15. SAVE & EXIT SETUP

Figure 4.12: Save & Exit Setup

Type "Y" will quit the Setup Utility and save the user setup value to RTC CMOS SRAM.

Type "N" will return to Setup Utility.

4.16. EXIT WITHOUT SAVING

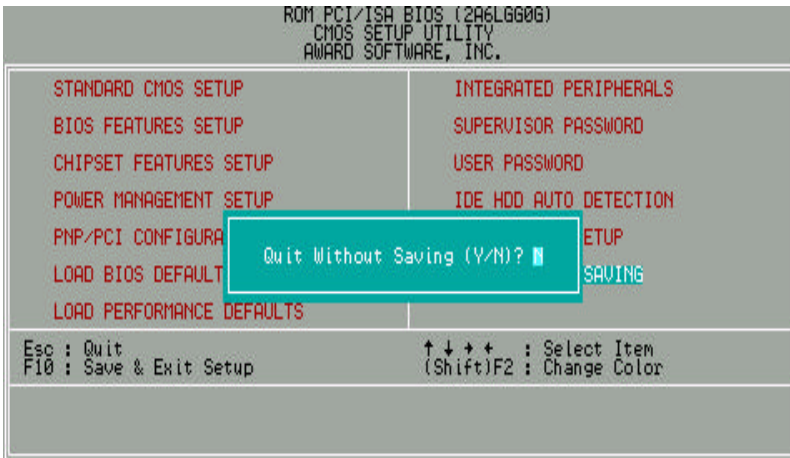


Figure 4.13: Exit Without Saving

Type "Y" will quit the Setup Utility without saving to RTC CMOS SRAM.

Type "N" will return to Setup Utility.

APPENDIX A: VIA Chipset Driver Installation

When loading the VIA drivers for the system, the Windows version should be OSR 2.1 or later or Windows 98 Bata3 or later.

If your system version is Win95 or OSR 2.0, You must use the **USB support update** (make sure the update language is the same with your system language) to upgrade your system to OSR 2.1.

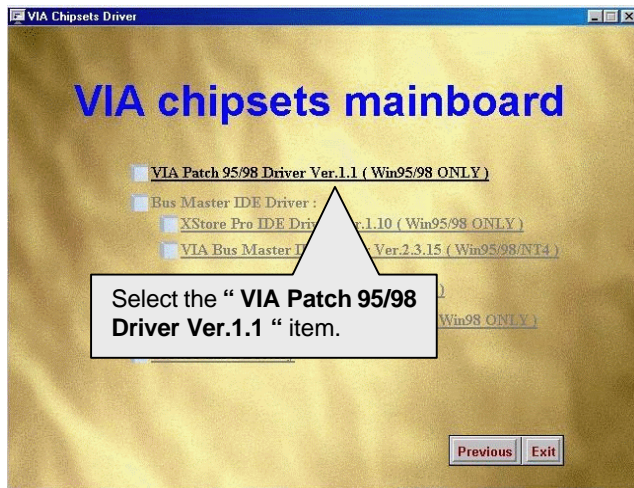
☛ You can find the **USB support update** in the **April 1997 MSDN Disc1\OSR2\USBSUPP**.



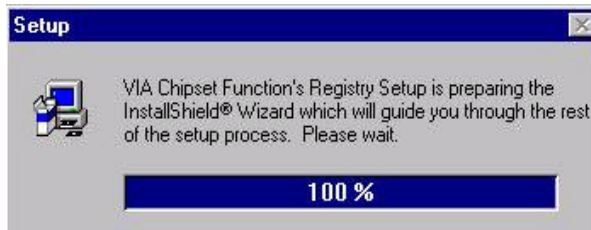
A.1 VIA Patch 95/98 Driver Ver.1.1(Win95/98 ONLY)

Step By Step Installation

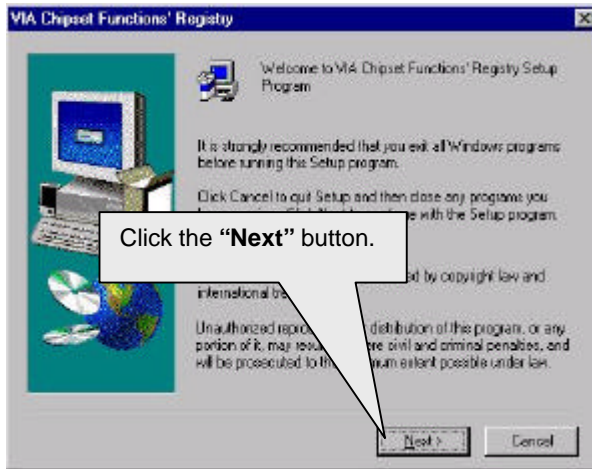
STEP 1:



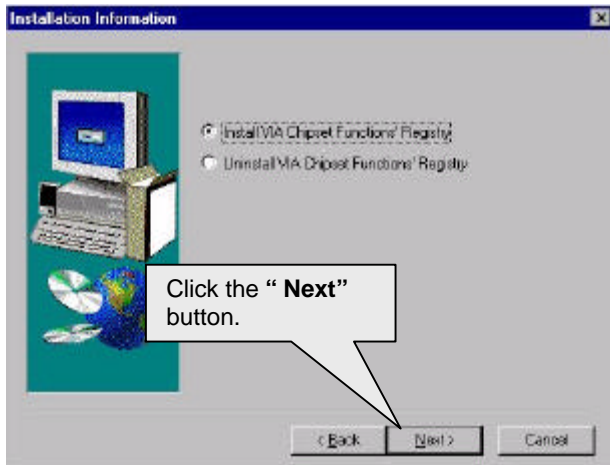
STEP 2:



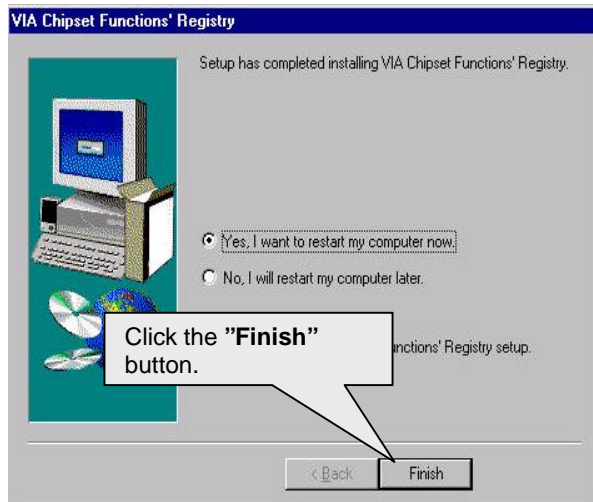
STEP 3:



STEP 4:



STEP 5:

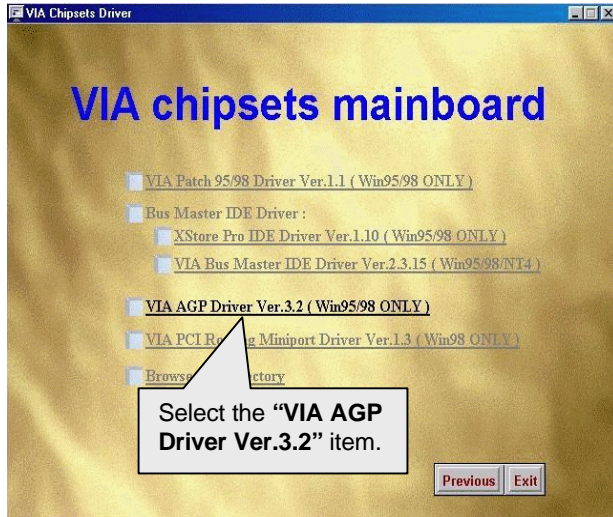


STEP 6:

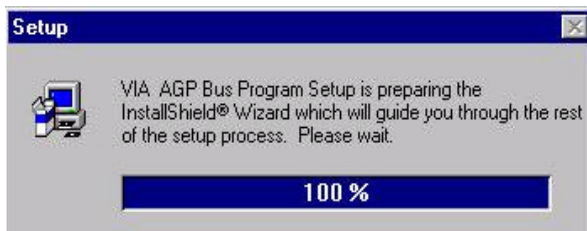
System will restart and start up using the VIA chipset driver.

A.2 VIA AGP Driver Ver.3.2 (Win95/98 ONLY)

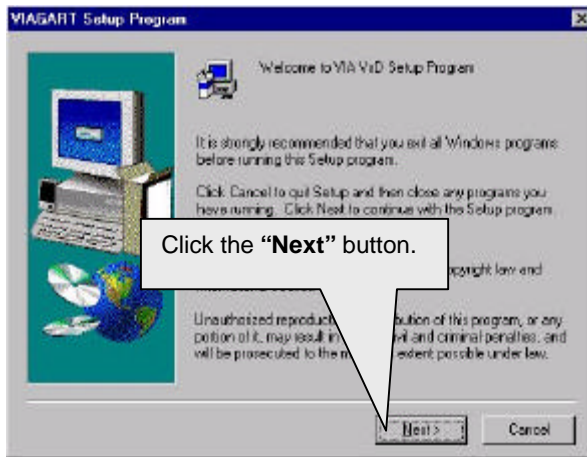
STEP 1:



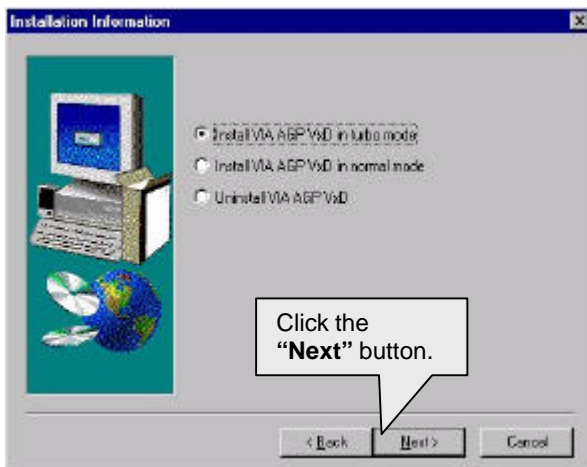
STEP 2:



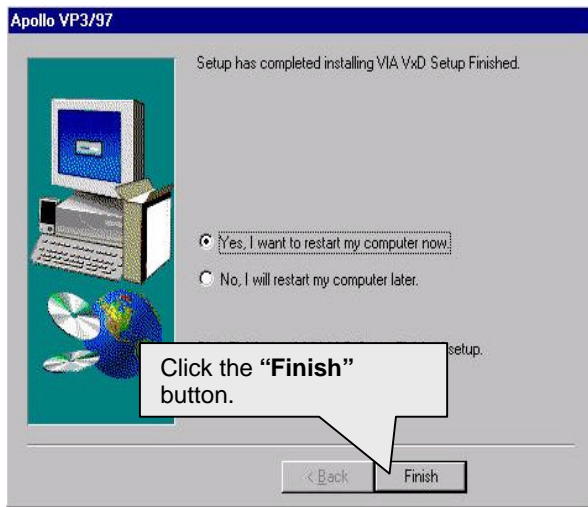
STEP 3:



STEP 4:



STEP 5:

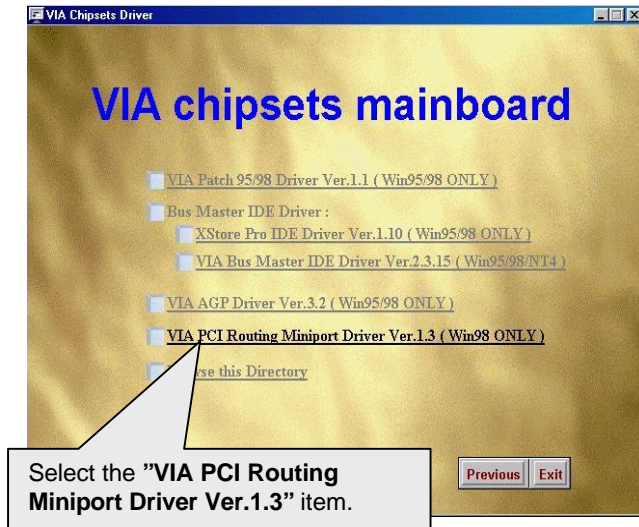


STEP 6:

System will restart and start up using the VIA chipset driver.

A.3 VIA PCI Routing Miniport Driver Ver.1.3 (Win98 ONLY)

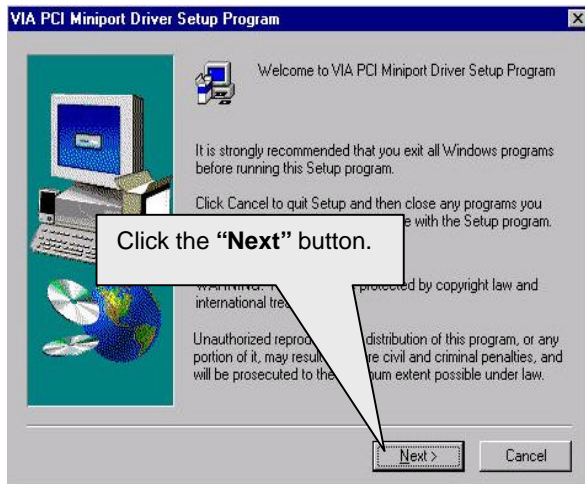
STEP 1:



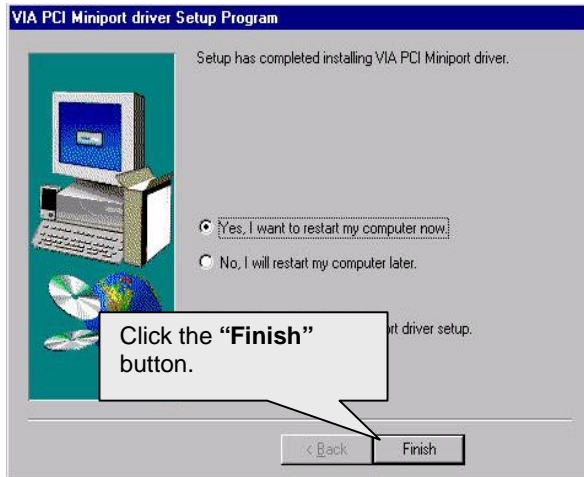
STEP 2:



STEP 3:



STEP 4:

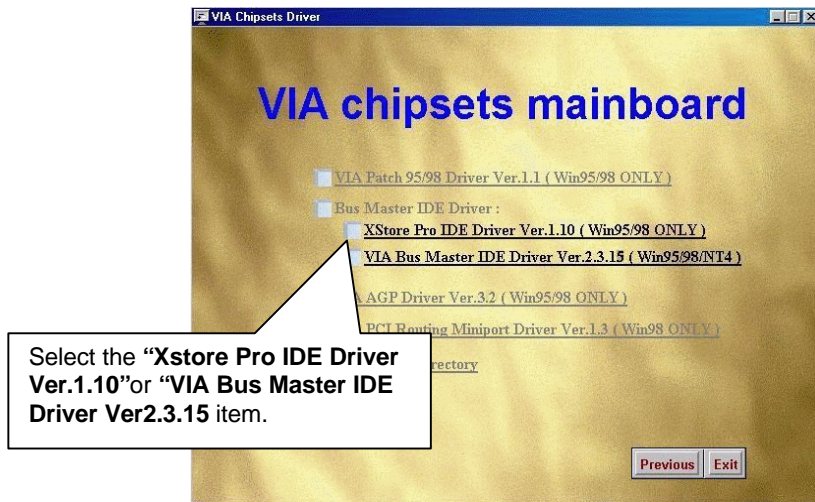


STEP 5:

System will restart and start up using the VIA chipset driver.

A.4 Bus Master IDE Driver

We support two kinds of high performance IDE Bus master (Ultra DMA) Drivers. You could install one of them to enable the DMA operation of your hard disk/CD-ROM drives.



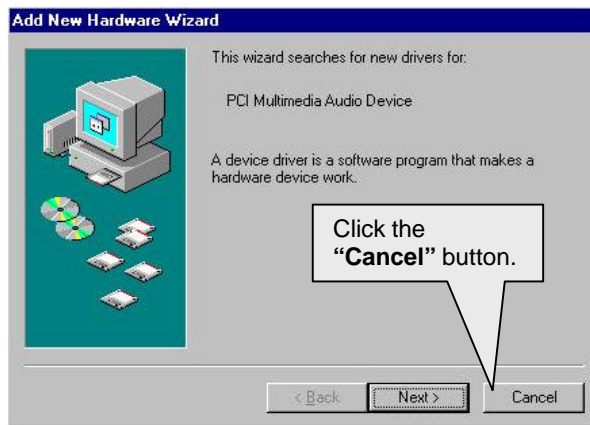
APPENDIX B: Audio Driver Installation

B.1. ESS Solo-1 PCI sound driver installation:

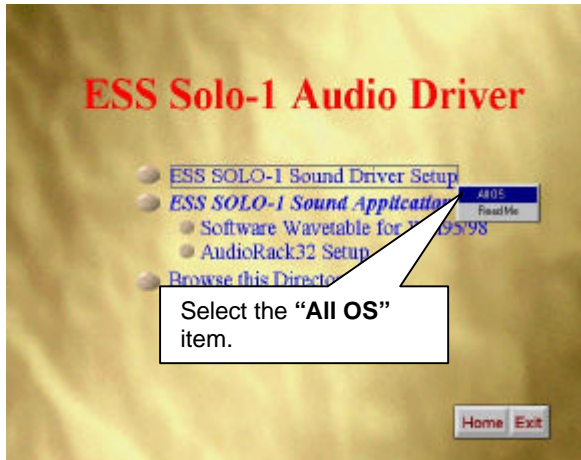
This manual assumes that your CD-ROM device drive letter is D:

When starting Windows 95/98, the operation system will detect that you have a new PCI Multimedia Audio Device, and the **Add New Hardware Wizard** will show up.

STEP 1:



STEP 4:

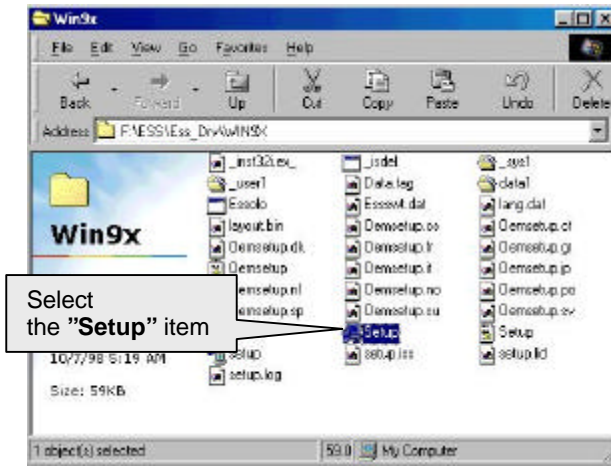


Please select the Operation System you want to install.
(Ex.If you are using windows 98, select the Win9x file folder.
If you are using Windows NT4.0, select the Nt4.0 file folder.)

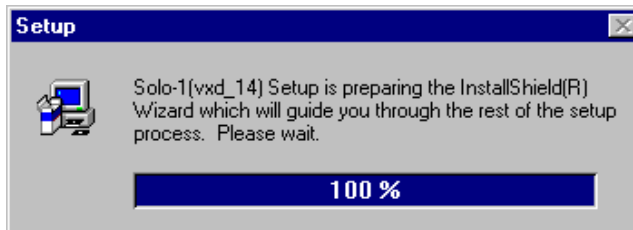
STEP 5:



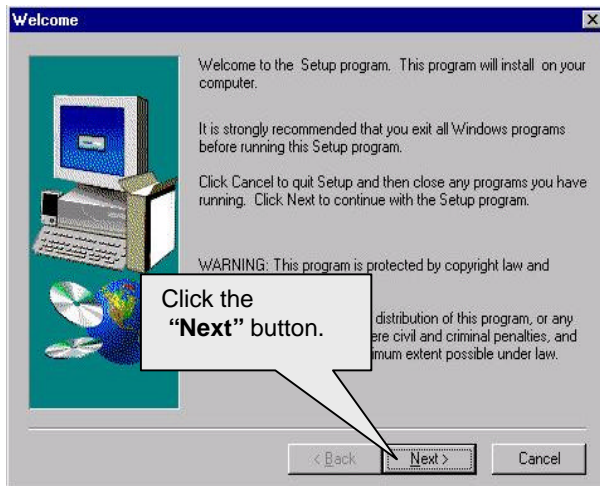
STEP 6:



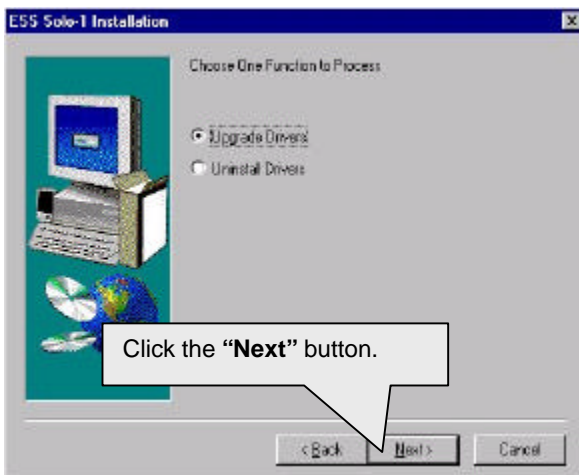
STEP 7:



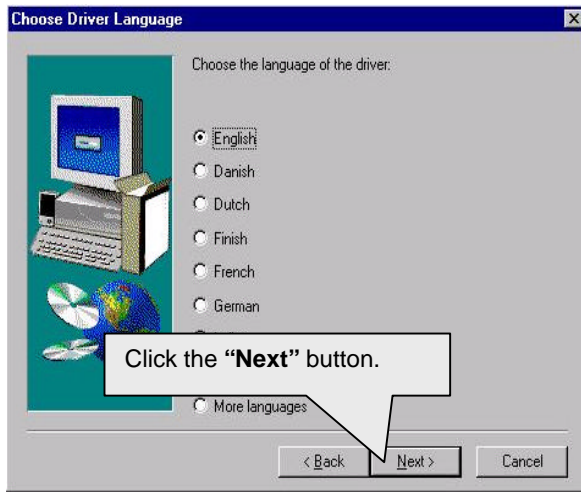
STEP 8:



STEP 9:



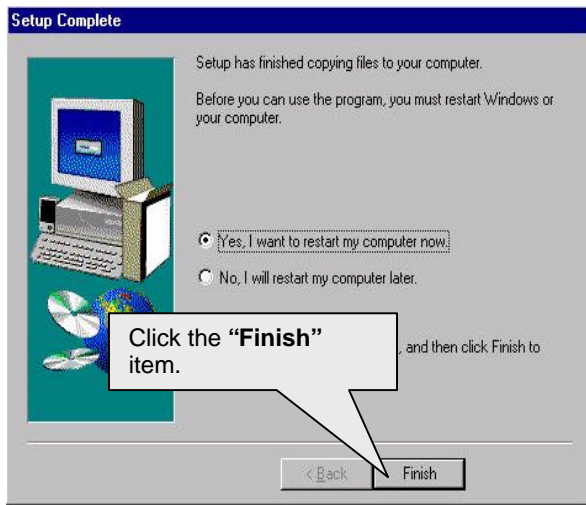
STEP 10:



STEP 11:



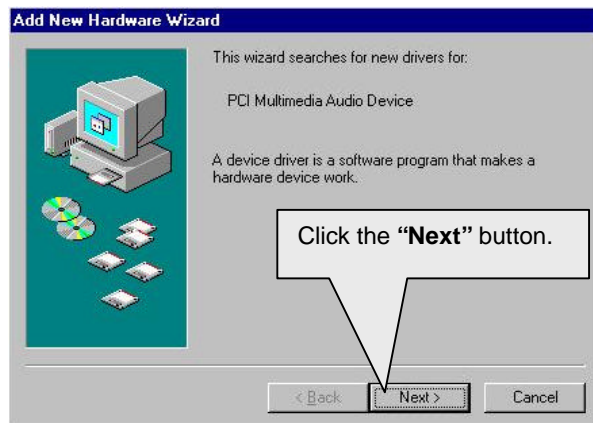
STEP 12:



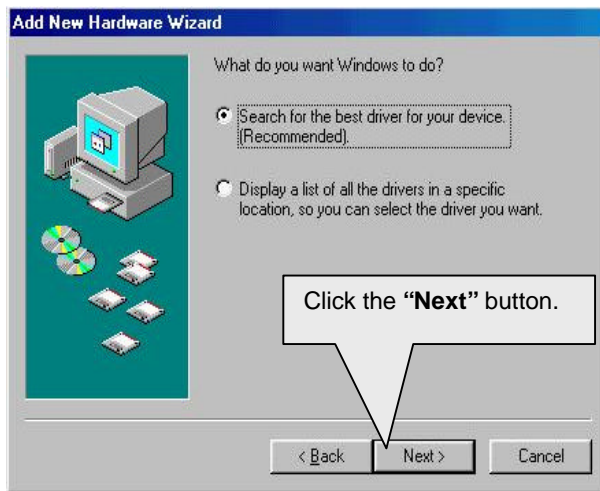
When restarting Windows95/98, the operation system will detect that you have "PCI Multimedia Audio Device", and the **Add New Hardware Wizard** will show up.

Please follow the steps below:

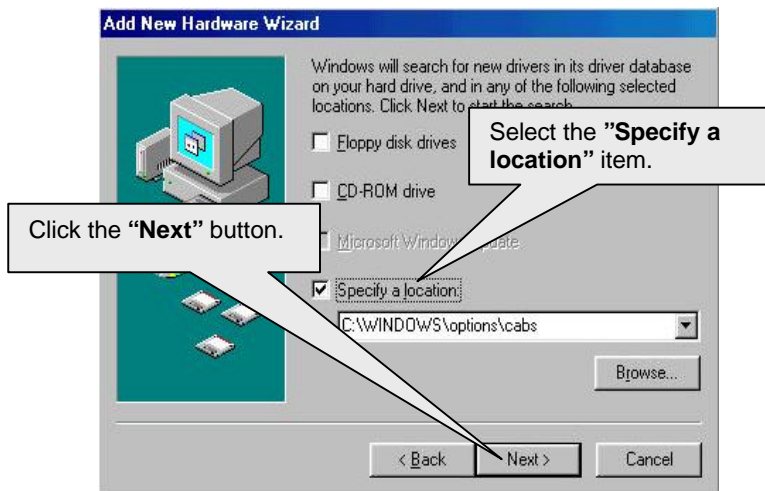
STEP 13:



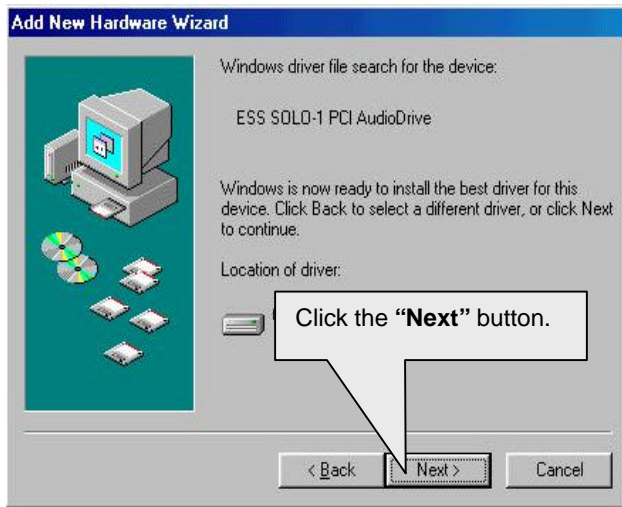
STEP 14:



STEP 15:



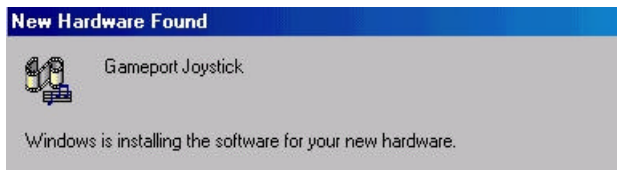
STEP 16:



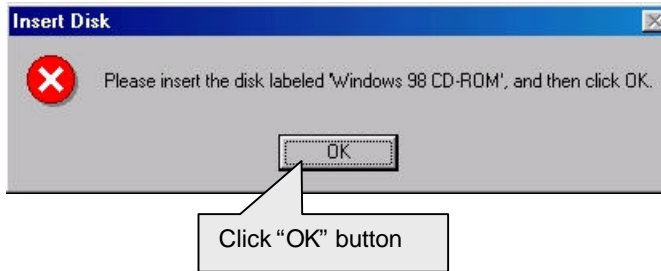
STEP 17:



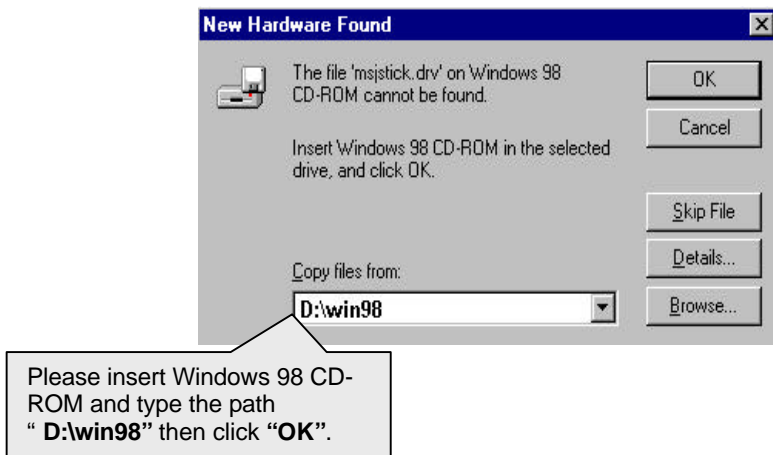
STEP 18:



STEP 19:



STEP 20:



Then the sound driver installation is completed.

APPENDIX C : Bugs & Limitations

1. For some SDRAM Modules, when you are running Winstone 99 (Business Winstone 99) under the Windows NT4.0 operating system, the following error message may appear:

“ mtrun-exe-Bad image: The application or DLL C:\WINNT\System \MSVCRi40.DLL is not a valid Windows NT image. Please check this against your installation diskette.”


```

ROM PCI/ISA BIOS (2A69KG0F)
CHIPSET FEATURES SETUP
AWARD SOFTWARE, INC.

Bank 0/1 DRAM Timing      : Turbo
Bank 2/3 DRAM Timing      : Turbo
Bank 4/5 DRAM Timing      : Turbo
SDRAM Cycle Length        : 2
DRAM Clock                 : Host CLK
Memory Hole At 15M-16M    : Disabled
Read Around write         : Disabled
Concurrent PCI/Host       : Disabled
Video RAM Cacheable       : Disabled
AGP Aperture Size         : 64M
Power LED in Suspend      : BLINKING
Spread Spectrum            : Disabled

Slow Down CPU Duty Cycle  : Normal
Shutdown Temp.(°C/°F)     : 75/167

**Temp. Select (°C/°F)**
CPU :70/158
**Temperature Alarm**
CPU :No
**Fan Fail Alarm**
CPU:No POWER:No SYS:No

Reset Case Open Status    :No
Case Opened                :No

**Current Temp.(°C/°F)**
CPU : 39/217

**Current Fan Speed (RPM)**
CPU: 4326 POWER:0 SYS:0

**Current Voltage (V)**
VCORE : 2.83 VGTL : 1.48 UCC3: 3.37
+ 5V: 4.94 +12V: 12.34 -12V: -12.85
- 5V:- 5.04 VBAT: 3.07 5VSB: 4.97

ESC : Quit          ↑↓↓ : Select Item
F1  : Help          PU/PD/+/- : Modify
F5  : Old Values   (Shift)F2 : Color
F6  : Load BIOS Defaults
F7  : LOAD PERFORMANCE DEFAULTS

```

FCC Compliance Statement:

This equipment has been tested and found to comply with limits for a Class B digital device, pursuant to Part 15 of the FCC rules. These limits are designed to provide reasonable protection against harmful interference in residential installations. This equipment generates, uses, and can radiate radio frequency energy, and if not installed and used in accordance with the instructions, may cause harmful interference to radio communications. However, there is no guarantee that interference will not occur in a particular installation. If this equipment does cause interference to radio or television equipment reception, which can be determined by turning the equipment off and on, the user is encouraged to try to correct the interference by one or more of the following measures:

- Reorient or relocate the receiving antenna
- Move the equipment away from the receiver
- Plug the equipment into an outlet on a circuit different from that to which the receiver is connected
- Consult the dealer or an experienced radio/television technician for

additional suggestions

You are cautioned that any change or modifications to the equipment not expressly approved by the party responsible for compliance could void Your authority to operate such equipment.

This device complies with Part 15 of the FCC Rules. Operation is subjected to the following two conditions 1) this device may not cause harmful interference and 2) this device must accept any interference received, including interference that may cause undesired operation.

Declaration of Conformity

We, Manufacturer/Importer
(full address)

G.B.T. Technology Träding GMBH
Ausschlager Weg 41, 1F, 20537 Hamburg, Germany

declare that the product
(description of the apparatus, system, installation to which it refers)

GA-6VMA

is in conformity with
(reference to the specification under which conformity is declared)
in accordance with 89/336 EEC-EMC Directive

| | |
|--|--|
| of radio disturbance characteristics of industrial, scientific and medical (ISM) high frequency equipment | electrical equipment "Harmonics" |
| of radio disturbance characteristics of broadcast receivers and associated equipment | electrical equipment "Voltage fluctuations" |
| of radio disturbance characteristics of household electrical appliances, portable tools and similar electrical apparatus | Residual, commercial and light industry Residual, commercial and light industry |
| of radio disturbance characteristics of fluorescent lamps and luminaries | Industrial environment |
| broadcast receivers and associated equipment | Industrial environment |
| of radio disturbance characteristics of information technology equipment | appliances tools and similar apparatus |

The manufacturer also declares the conformity of above mentioned product with the actual required safety standards in accordance with LVD 73/23 EEC

| | | | |
|-----------------------------------|---|-------------------------------------|---|
| <input type="checkbox"/> EN 60065 | Safety requirements for mains operated electronic and related apparatus for household and similar general use | <input type="checkbox"/> EN 60950 | Safety for information technology equipment including electrical business equipment |
| <input type="checkbox"/> EN 60335 | Safety of household and similar electrical appliances | <input type="checkbox"/> EN 50091-1 | General and Safety requirements for uninterruptible power systems (UPS) |

Manufacturer/Importer

(Stamp)

Date : Mar. 4, 1999

Signature : Rex Lin

Name : Rex Lin