

Chapter 6

SiS® 6326 VGA DRIVER

1. Overview

The SiS® 6326 AGP/PCI graphics & video acceleration is a highly integrated graphics controller. Integrating AGP 2x/PCI VGA controller, 3D/2D graphics accelerator and video accelerator, the NTSC/PAL TV-OUT solution and MPEG-II/I hardware video decoder.

1.1 SiS® 6326 Features

- Support 1MBx16 SDRAM type up to 100MHz.
- Support AGP 2X BUS Up to 133MHz.
- Hi performance and high quality 3D accelerator.
- Complete TV_Out solution.
- MPEG II/I Hardware Video Decoder.

1.2 System Requirements

This section describes system requirements for the VGA Driver installation and Usage.

Computer	Intel® Pentium® II/Pentium® III/Celeron™ processor or higher
Monitor	VGA Support, minimum 640x480 resolution
Operating system	DOS 5.0 or higher, Windows® 95/98, Windows® NT, or OS/2®
CD-ROM	Double Speed or Higher
Chipset	SiS® 6326
VGA BIOS	Version 1.01 or Higher

2. SiS® 6326 VGA Driver Setup & Usage Procedures

Insert the CD-title into your CD-ROM drive. This CD will auto-run. This will display installation for VGA driver and sound driver. Also included are Intel® PIIX4E patch for Windows® 95, Trend PC-cillin 98 and Bus Master driver. Just click the button for automatic installation for VGA driver.

2.1 Windows® 95/98

If you start Windows® 95/98, this will automatically detect this hardware onboard “PCI Multimedia Audio Device” and “Gameport Joystick”. You need to click “Next”, then “Finish”. Do not click on the “Cancel”. The driver need these ID.

2.1-1 Display Driver Installation Procedure:

- Step 1:** Insert the provided CD_ROM disk into the CD-ROM drive.
- Step 2:** Look for the CD_ROM drive, double click on the CD_ROM icon. This will show the setup screen.
- Step 3:** Click on “SiS 6326 Installation” icon.
- Step 4:** This will show the SiS installation menu.
- Step 5:** Click on “Display Drivers”.
- Step 6:** Click “OK”.
- Step 7:** This will copy the VGA drivers into the hard drive.
- Step 8:** A message will appear stating you must restart the Windows® 95/98 system, select **yes** to restart.
- Step 9:** After restarting, Windows® 95/98 will show a new display setting.

2.1-2 Changing resolution, color depth, and refresh rate:

- Step 1:** Click **Start** menu and select **Control Panel** from **Settings** group.
- Step 2:** Select **Display** icon.
- Step 3:** Select **Settings**.
- Step 4:** Select Color Palette to change between 16 color, 256 color, Hi color, or True color.
- Step 5:** Select desktop resolution from 640x480, 800x600, 1024x768, and 1280x1024.
- Step 6:** Select Refresh rate list box to change the screen refresh rate.
- Step 7:** Click OK or Apply.

2.2 Windows® NT

You need to install Windows® NT “Service Pack”, before you install Windows® NT driver.

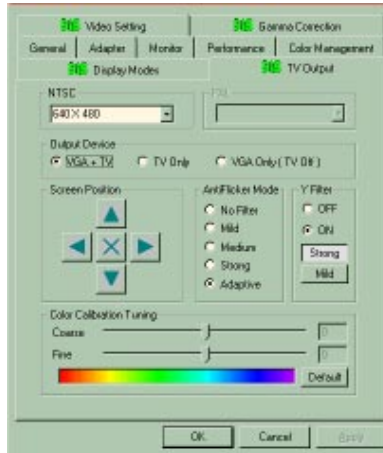
2.2-1 Display Driver Installation Procedure:

- Step 1:** Click **Start** menu and select **Control Panel** from **Settings** group.
- Step 2:** Select **Display** icon.
- Step 3:** Select **Settings** on the Display Properties.
- Step 4:** Select **Display Type**.
- Step 5:** Select **Change** from the **Adapter Type** Area.
- Step 6:** Select **Have Disk** of Change Display.
- Step 7:** Insert the **CD-Title Disk** into CD-ROM Drive.
- Step 8:** When the Install from Disk dialog box appears, look for your CD-ROM drive :**\\SVGA\\SiS\\6326\\Winnt**
- Step 9:** When the **Change Display** dialog box appears, click **OK**.
- Step 10:** When the Third-party Drivers dialog box appears, click **Yes**
A message will appear stating that the drivers were successfully installed. Click OK. You must now restart Windows® NT.

2.2-2 Changing resolution, color depth, and refresh rate:

- Step 1:** Click **Start** menu and select **Control Panel** from **Settings** group.
- Step 2:** Select **Display** icon.
- Step 3:** Select **Settings**.
- Step 4:** Select Color Palette to change between 16 color, 256 color, 32768 colors, 65536 colors, and 16777216 colors.
- Step 5:** To select desktop resolution size, go to the Desktop area and use the slide bar to change resolution from 640x480, 800x600, 1024x768, to 1280x1024.
- Step 6:** Select Test to test the resolution. If the display test screen was good, then select Yes when the Testing Mode dialog box appears. If the display test screen was bad, then select No. Windows® NT will give you an error message.
- Step 7:** Click OK. If the display test screen was a good and you select Yes, Windows® NT will change the mode without restarting the system.

2.3 Using “SiS TV-OUT”



If there are S-connector or composite connector in your adapter and you had connected your TV to one of this connector (S-connector would get more better quality) and you had turned TV on and you are in one of 640x480x60Hz modes for NTSC and 800x600x56Hz modes for PAL. Then,

1. Go to “Display Properties” Screen and you will find that “SiS TV-OUT” item had been added.
2. First select “SiS TV-OUT” item and you may
 - Use “Color Calibration Turning” to tune your color TV to get color if it appears black/white.
 - For NTSC, use “NTSC” to select “640x480 60Hz” to get full TV display but some information would be invisible. Or select “560x420 60Hz” to get a small display screen on your TV.
 - For PAL, use “PAL” to select “800x600 50Hz” to get full TV display but some information would be invisible. Or select “720x540 50Hz” to get a small display screen on your TV.
 - Use “Screen Position” to adjust your TV display position.
 - Use “AntiFlicker Mode” to adjust the anti-flicker effect.

- Use “Y Filter” to turn Y-filter on (image would be softer) or off (image would be sharper).
 - Use “TV-Mode” to turn TV output on or off.
 - Note1: SiS6326 only supports TV-OUT function in the following modes:
 - For NTSC, 640x480x60Hz and 640x400x60Hz (hidden)
 - For PAL, 800x600x60Hz and 640x480x50Hz (hidden)
 - Low resolution modes but they are hidden and used by application programs and cannot be select for end user
 - Note2: If TV output is turned on, the display frame rate would be forced to 60Hz. Only when you turn off TV output and close “Display Properties” then enter “Display Properties” again, the “Display Modes” would appear and let you set other frame rates.
3. After completing selection, select “OK” or “Apply” to complete the whole setting.
4. Two cases happen :
- If you did not change “NTSC” selection, you may continue your job.
 - If you change “NTSC” selection, program would refresh the screen and ask if you want to keep it. Just click “Yes” if you want to keep it. Or click “No” if you don’t want to change

2.4 Using “SiS Gamma Correction”

If you are in TV-OUT enable modes and in 16-bit color (64K-color) or 24-bit color (true color) modes, you may use “SiS Gamma Correction” to adjust your TV display quality to your favorite style.

1. Go to “Display Properties” Screen and you will find that “SiS Gamma Correction” item had been added.
2. First select “SiS Gamma Correction” item and you may
 - Use “Setting Gamma” to tune your color TV’s color style.
 - Use “Default” to return to the original program default setting.
 - Use “Brightness” to turn your TV to brighter or darker.
3. After completing selection, select “OK” or “Apply” to complete the whole setting.