

Tyan S1830
Tsunami AT

Motherboard User's Manual
Revision 1.30

Copyright © Tyan Computer Corporation, 1999. All rights reserved. No part of this manual may be reproduced or translated without prior written consent from Tyan Computer Corp.

All registered and unregistered trademarks and company names contained in this manual are property of their respective companies including, but not limited to the following.

AMIBIOS is a trademark of American Megatrends Incorporated.

Windows is a trademark of Microsoft Corporation.

IBM, PC, AT, PS/2 are trademarks of IBM Corporation.

INTEL, Pentium II, Celeron are trademarks of Intel Corporation.

S1830S/SL Tsunami AT is a trademark of TYAN Computer Corporation.

Information contained in this publication has been carefully checked for accuracy and reliability. In no event will Tyan Computer be held liable for any direct or indirect, incidental or consequential damage, loss of use, loss of data, or other malady resulting from errors or inaccuracies of information contained in this manual. The information contained in this document is subject to change without notice.

PRINTED IN USA

Table of Contents

1. Introduction.....	4
Overview.....	4
Icons.....	5
Hardware Specifications/Features.....	5
Software Specifications.....	7
Technical Support.....	8
Returning Merchandise for Service.....	8
2. Board Installation.....	10
Unpacking.....	10
Installation.....	10
Setting Jumpers.....	23
3. Onboard Resource Settings.....	24
Quick Reference for Jumpers.....	24
Map of Motherboard Jumpers.....	25
Hardware CMOS & Password Reset.....	28
Soft Power Connector.....	29
Speaker Connector Installation.....	29
Hardware Reset Switch Connector Installation.....	29
External SMI.....	30
CMOS RTC.....	30
Flash EEPROM.....	30
RAM Installation.....	31
Cache Memory.....	32
Frequently Asked Questions.....	32
4. BIOS Configuration.....	34
Main Setup.....	35
Advanced CMOS Setup.....	40
Chipset Setup.....	45
Power Management Setup.....	51
Plug and Play Setup.....	55
Peripheral Setup.....	60
5. System Resources.....	62
Beep Codes.....	62
Troubleshooting System Problems.....	63
Displayed Error Messages.....	64
Glossary.....	66

chapter 1

Introduction

Overview

The S1830S and S1830SL (S1830) Tsunami AT is a quality, high performance mainboard designed for Intel Pentium II and Celeron microprocessors. This mainboard utilizes the Intel 440BX AGPset and can support CPU speeds of 233MHz through 450MHz, and host bus speeds of 66MHz or 100MHz. The Tsunami AT also has 100MHz Front Side Bus support, which allows you to take full advantage of 100MHz SDRAM memory modules.

The S1830 mainboard, with built-in AGP slot, provides high performance capabilities that are ideal for a wide range of demanding applications such as CAD, CAM, CAE, desktop publishing, 3D animation, and video production.

This integrated system board achieves high reliability with numerous features and yet is small enough to be supported in a Baby AT form factor. Some of the features included are onboard dual channel PCI PIO, Bus Master IDE and UltraDMA/33, onboard floppy controller, and onboard high speed I/O.

Flexibility and expandability have been designed into the Tsunami AT. With I/O and drive controller support built onboard, the one AGP slot, four PCI and four ISA slots (one shared, eight usable) are free for numerous add-on expansion cards.

Remember to take a look at TYAN Computer’s web site located at <http://www.tyan.com>. There you can find information on all of TYAN’s products along with FAQs, distributors list, drivers, and BIOS setting explanations.

Icons

In order to help you navigate this manual and set up your system, we have added several icons to our format.



This icon alerts you to particularly important details regarding the setup or maintenance of your system. This icon often appears next to information that may keep you from damaging your board or system. While we will often point out the most vital paragraphs in a chapter, you should always read every word in the text. Failing to do so can lead to exasperation and expense.



Wherever possible, we have included step-by-step instructions for setting up your system, which are indicated by this icon. However, it is in your best interest to read an entire section (and perhaps the entire manual) before you begin to fiddle with your motherboard.



While we have alerted you to potential dangers in several places in the manual with this icon, these warnings should not be regarded as the whole of your safety regimen. Never forget that computers are electrical devices, and are capable of delivering a shock. Prevent damage to yourself and to your board: always ensure that your system is turned off and unplugged whenever you are working with it, and that you are equipped with a static safety device.

Hardware Specifications/Features

Processor Information

- One SEC slot (Slot One type)
- 66MHz to 100MHz BIOS selectable bus support
- Pentium II /III 233-600MHz
- Supports Celeron CPU

Chipset Information

- Intel 440BX AGPset
- Intel PIIX4e controller

Voltage and Power Information

- National 309 Super I/O chipset
- AT/ATX power supply connectors
- +12V power source for DC fan onboard
- 3.3V DRAM support
- Utilizes GTL+ bus to reduce power consumption and EMI
- Power recovery after interrupt
- Wake-on LAN 3-pin header (requires ATX 2.01 compliant power supply)
- VRM component installed onboard
- Onboard CPU/chassis fan headers

Main Memory

- Up to 1024MB onboard
- Four 168-pin DIMM sockets
- Supports 66 or 100MHz SDRAM (100 MHz SDRAM required for 100MHz bus speeds)
- Supports SDRAM w/SPD, SDRAM+ECC

System Management (1830SL only)

- National LM79 and LM75 ASICs with onboard alarm for monitoring temperature, supply voltages, and fan speed. Reports to the OS for system monitoring
- Intel LANDesk® Client Manager software

Expansion Slots

- One 32-bit AGP slot
- Four 32-bit PCI Bus Master slots
- Four 16-bit ISA slots
- One shared, eight usable

Physical Dimensions

- Baby AT design.
- 13 inches x 8.6 inches

BIOS Information

- AMI Plug and Play flash BIOS
- Deep Green, Energy Star, Year 2000

Disk Drive & System I/O

- compliant
- Yellow LED for sleep, PC98 ready
- UltraDMA/33 (UIDE) built-in (up to 33MB/s DTR)
- Two PCI bus mastering EIDE channels
- Supports EIDE CD-ROMs
- PIO Mode 3&4 (up to 17MB/s DTR)
- Bus mastering mode (up to 22MB/s DTR)
- Support for two floppy drives (supports Mode 3 and up to 2.88MB)
- Two serial ports (16550 UARTs)
- One ECP/EPP parallel port
- One IR (InfraRed) I/O interface port header
- Two USB rev 1.2 port headers.
- One PS/2 mouse port.
- One AT keyboard connector.

Warranty

- 3 year manufacturer's warranty.

Software Specifications

OS

- Operates with MS-DOS, Windows 3.x, Windows for WorkGroups 3.x, Windows 95, Windows 98, Windows NT, OS/2, Novell Netware, Solaris, and SCO Unix.

Information presented in this publication has been carefully checked for reliability. However, no responsibility is assumed for inaccuracies. The information contained in this document is subject to change without notice.

Technical Support

If a problem arises with your system, you should turn to your dealer for help first. Your system has most likely been configured by them, and they should have the best idea of what hardware and software your system contains. Hence, they should be of the most assistance. Further, if you purchased your system from a dealer near to you, you can actually bring your system in to them to have it serviced, instead of attempting to do so yourself (which can have expensive consequences).

Help resources:

1. See FAQ and beep codes sections of this manual.
2. See Tyan web site for FAQ, bulletins, driver updates, etc.
<http://www.tyan.com>
3. Contact your dealer or distributor for help BEFORE calling Tyan.
4. Check the Tyan user group: alt.comp.periphs.mainboard.tyan
5. Email Tyan tech support: techsupport@tyan.com
6. Call Tyan tech support: 510-440-8808

Returning Merchandise for Service

During the warranty period, contact your distributor or system vendor **FIRST** for any product problems. This warranty only covers normal customer use and does not cover damages incurred during shipping or failure due to the alteration, misuse, abuse, or improper maintenance of products.

For Resellers Only:

A receipt or copy of your invoice marked with the date of purchase is required before any warranty service can be rendered. You can obtain service by calling the manufacturer for a Return Merchandise Authorization (RMA) number. The RMA number should be prominently displayed on the outside of the shipping carton and the package should be mailed prepaid, or hand-carried to the manufacturer. TYAN will pay to have the board shipped back to you.

This page has been intentionally left blank.

chapter 2

Board Installation

Unpacking

The mainboard package should contain the following:

- (1) S1830S/SL mainboard
- (1) 40-pin IDE and 34-pin floppy cable pack
- (1) One PS/2 Mouse cable
- (1) User's manual
- (1) CPU retention module
- (1) System Management & Driver CD (Intel LANDesk - 1830SL only)
- (1) One BX Driver Diskette (1830S only)

Installation

You are now ready to install your mainboard. The mounting hole pattern of the S1830 matches the Baby AT system board specifications. Your chassis should be that of a standard AT mainboard form factor with AT or ATX power supply.



procedure

How to install our products right...the first time.

What's the first thing I should do?

The first thing you should do is read this user's manual. It contains important

information which will make configuration and setup much easier.

The next step is to properly ground yourself. First, unplug the power from your computer case and then touch the metal casing of the power supply or any metal part on the computer case. This will discharge any electricity from your body. Take the motherboard out of the cardboard box and static bag, holding it by its edges, and place it on a grounded anti-static surface, component side up. Inspect the board for damage.



important!

DO NOT APPLY POWER TO THE BOARD IF IT HAS BEEN DAMAGED!

Press down on any of the socket ICs if it appears that they are not properly seated (the board should still be on an anti-static mat). Do not touch the bottom of the board. Remember, don't take any electronic device out of its protective bag until you are ready to actually install it into the computer case. If you don't ground yourself, you risk zapping the motherboard or adapter card. Subsequent problems may not arise immediately because electrostatic discharge damage, unlike physical damage, causes the device to fail over time.

Install the motherboard into your case.

Follow the instructions provided by the case manufacturer for proper installation guidelines. TYAN recommends that you use only one screw to hold down the motherboard. The rest of the mounting holes should be used for the plastic standoffs. If your case does not have a hole for a standoff, simply cut off the bottom of the plastic standoff so that the flat portion rests on the metal. The adapter cards and the screws holding them down will keep your board flat. The fastening screw should not short any of the traces on the motherboard. Make certain that you do not overtighten the screw, as it will damage the motherboard and possibly break internal traces in the surrounding area. The hole you should use is located at the top-center of the board where the adapter cards are fastened to the case.

Plug in the power connector as shown.

The Tsunami AT has both AT and ATX power supply connectors. The soft power on/off functions of Windows 9x and Wake on LAN are only supported with ATX power supplies. The photos on the next page show the ATX power connector before (Figure 1) and after (Figure 2) it has been plugged in.

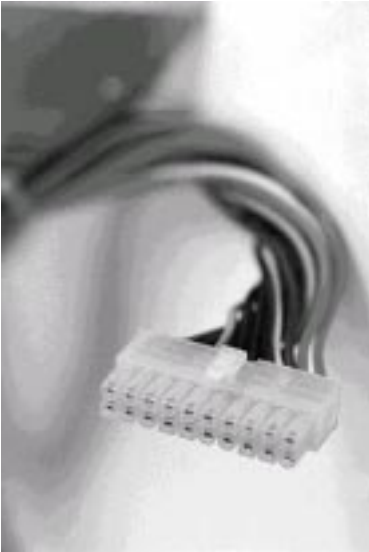


Figure 1

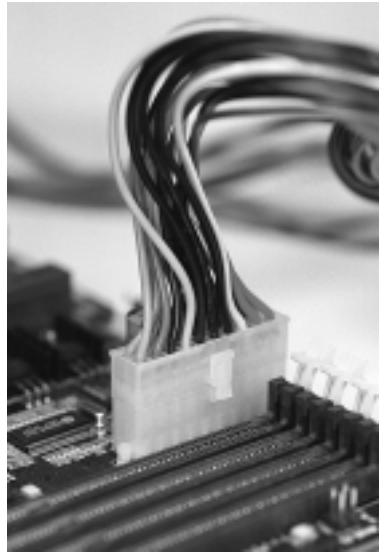


Figure 2



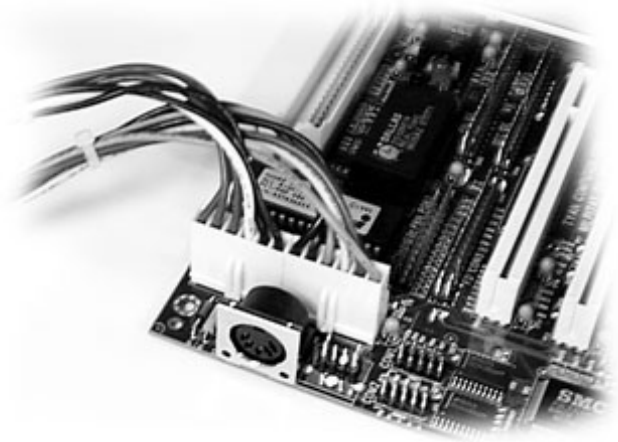
The plastic clip on the power connector should lock over the plastic tab on the onboard connector. You shouldn't be able to plug the power connector in any other way but just to be safe, make sure it looks like Figure 2 above. Make absolutely certain that you do not miss any pins because, if you do, you will void your warranty and cause damage to yourself or your motherboard when you turn the system on. After connecting the power, make sure the connector is seated firmly into its socket so it will not become loose or fall off when the computer is jostled or moved. **Note: Tyan recommends using an ATX power supply that conforms to industry standard revision 2.01.**



If you decide to use an AT power supply instead, connect the power supply to the board as shown in Figure 3 (Next page).

Note that the black wires are in the center of the two connectors. You should not be able to plug the two power connectors in any other way but just to be safe, make sure you have them connected as shown above. Make absolutely certain that you do not miss any pins because if you do, you will void your warranty and cause damage to yourself or your motherboard when you turn the system on. After connecting the power, make sure the connectors are seated firmly into their sockets so they will not become loose or fall off during movement of the computer.

Figure 3

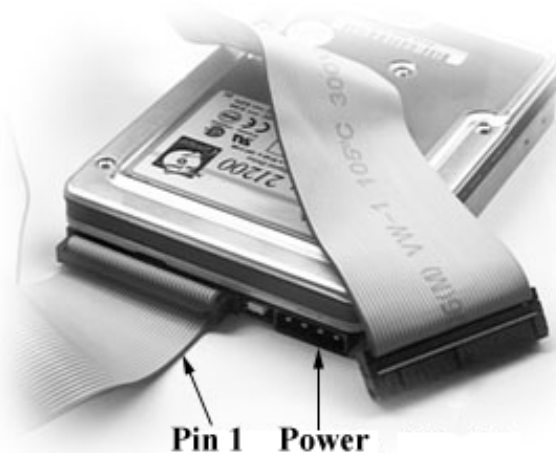


Next, connect your IDE cables (if you're using IDE hard drives).

The colored stripe on the cable indicating pin 1 should face towards the rear of the case (towards the ATX connectors).

In Figure 4 (below) you can see how the IDE cables should look when they are connected to your hard drive. Notice how Pin 1 (denoted by a red stripe) is connected so that it is next to the power connector of the drive. In most cases, this is the proper way of connecting your IDE cable to the hard drive. Figure 5 (on the next page) shows the IDE cable properly connected to the motherboard.

Figure 4



Contact your hard disk drive manufacturer or documentation for more information.

Some symptoms of incorrectly installed HDDs are:

- Hard disk drives are not auto-detected: may be a Master/Slave problem or a bad IDE cable. Contact your vendor.
- Hard Disk Drive Fail message at bootup: may be a bad cable or lack of power going to the drive.
- No video or beeps on bootup: usually means the cable is on backwards.
- Hard drive lights are constantly on: bad IDE cable or defective drive or motherboard. Try another HDD.
- Hard drives do not power up: check power cables and cabling. May also be a bad power supply or IDE drive.

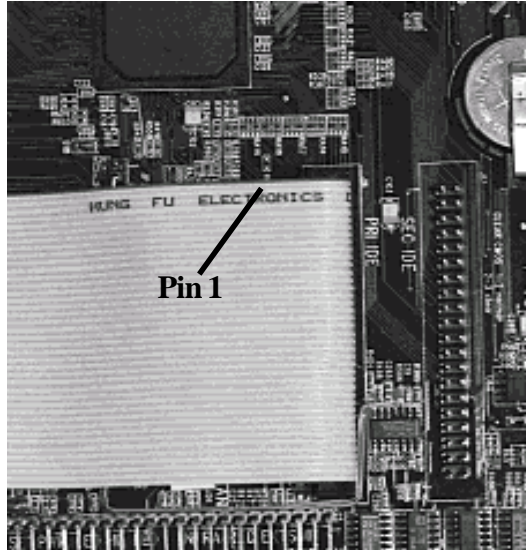


Figure 5

Now that you have installed your IDE drives, your floppies are next.

Pin 1 on the floppy cable is usually denoted by a red or colored stripe down one side of the cable (see Figure 6 on next page). Most of the current floppy drives on the market require that the colored stripe be positioned so that it is right next to the power connector. In most cases, there will be a key pin on the cable which will force you to connect the cable properly.

Drive A: is usually attached to the end of the cable with the twist in it. Drive B: is usually connected to the middle of the cable. Refer to your installation instructions or call your dealer if you are unsure about attaching floppy drives. Refer to Figure 6 for a detailed anatomy of the floppy cable. Remember, you can only have 2 floppy drives connected at any given time.



The colored stripe on the cable indicating pin 1 should face towards the rear of the case (towards the ATX connectors), as with the IDE cables. Please refer to your documentation for proper installation, or see Figure 5 on page 14.

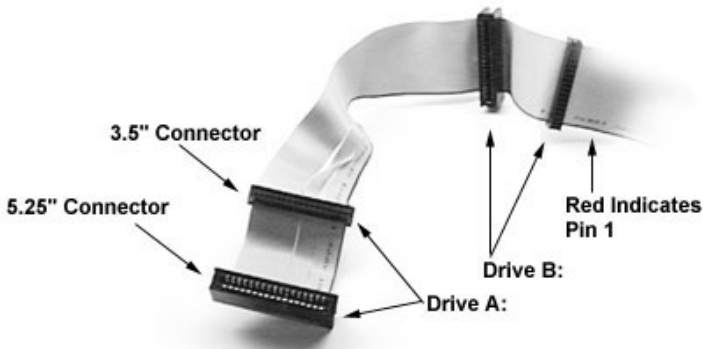


Figure 6

Some symptoms of incorrectly installed floppies are:

- Floppy drives are not detected: usually caused by faulty cables, backward cables, or a bad floppy or motherboard. Try another single floppy drive to verify the problem or try another cable. Also, check to see if the onboard floppy is enabled in the BIOS.
- Floppy Drive Fail message at bootup: the cable, floppy, or motherboard may be faulty. Try another cable or floppy drive to verify.
- Light on the floppy is on constantly: a dead give-away that the cable is on backwards. Reverse the cable at the motherboard end or the floppy end and try again.

Next are the Com and Printer ports.



Figure 7

Like the IDE and floppy cables, the colored or red edge of the cable always denotes pin 1 (Figure 7 previous page). Similarly, pin 1 on the motherboard is always pointing towards the keyboard connector or edge of the board. TYAN cables conform to the IBM standard pinouts and will differ from most other manufacturers'. Other cables will not work on TYAN boards.

The Printer and Com1 ports are on the same back plate. You want to make sure that you correctly align the connectors with the pins on the board because they are easy to miss. On most TYAN cables, there should be a pin missing on the motherboard. This is normal since it lines up with a key pin on the I/O connectors. This forces you to align the connector in the correct direction. The Printer port and Com2 are easily confused. The Printer cable is always attached with Com1 (Figure 8) where Com2 is supplied separately on a second back plate (Figure 9). Remember: Only TYAN cables will work on this motherboard. If you are using an existing case with old cables, your system may not function properly. Use TYAN-approved connectors to ensure compatibility.

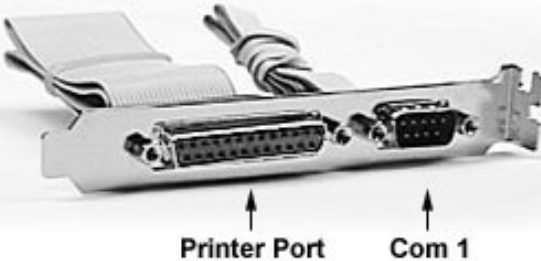


Figure 8



Figure 9

Connecting the PS/2 mouse.

This board has a PS/2 mouse port built in. Simply plug your PS/2 mouse into the PS/2 port; the pins will allow you to plug the mouse in only in the correct way. If you have any trouble locating the port, turn to the full page motherboard map on page 25. **Warning:** When plugging in your keyboard and mouse, or when plugging anything into a serial or Com port, make sure that the power is off. Connecting these devices and ports while the power is on is called "hot plugging," and may damage your system.



important!

Installing your add-in cards is relatively simple but...

there are a few rules you need to follow when plugging in a card. In order to assure proper operation and a quick installation, adhere to these guidelines:

- If you are going to install a PCI-Bus interface card on your system, be aware that any one of the two PCI slots can support a Master or Slave device.
- NEVER force a card into a slot. If it doesn't fit, look at the socket on the computer to make sure there are no wires or other obstructions to the slot.
- NEVER plug an ISA card into a PCI slot or a PCI card in an ISA slot. You will void your warranty and damage your system board if you do this.
- When plugging the card in, especially when installing long cards, try to push the entire card in at one time. Don't force one end of the card into the socket first and then the other. This will create a rocking motion between the card and the slot and it will damage the pins within the socket.
- Make sure that the cards are seated securely into the slots.
- Before turning on the system, make sure no cards are touching each other to prevent shorting.

If you follow these basic guidelines, there shouldn't be any problems with installation. However, if you do encounter any problems, have a qualified professional install your cards for you or contact your card manufacturer.

Remember, always read the manuals and installation notes that come with the adapter cards. They contain important information which will help you install the components right, the first time.

Next, you need to install your memory.

Since TYAN boards are manufactured with performance in mind, you should use add-in components that match. Some DIMM modules may seem to be high quality because of name or feel but that does not guarantee real-world usability. Some cheaper or OEM memory may have brand-name components, but they may be on inferior or substandard parts which do not meet the critical tolerances our products require. Because of this, your memory may not work correctly in a TYAN board though it may work well in a competitor's board. This is because many of our competitors do not adhere to the strict tolerances required for high performance. If you buy a TYAN board, you are getting the

best system available. To make installation easy and trouble free, get high quality parts. Some brands we recommend are Advantage Memory, Corsair Microsystems, Millenium, Kingston Memory, QesTec Incorporated, Unigen, Micron Technology, and Crucial Technology. These DIMMs have proven to be very stable on our boards and perform extremely well.

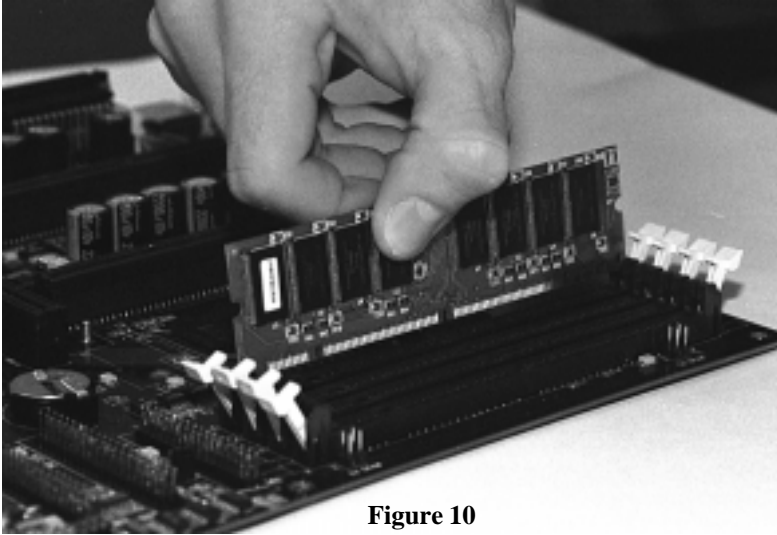


Figure 10



To install your DIMMs, line your module up so that the pins fit into the slot. There is only one way that your DIMM can fit properly. Make sure that the short row of pins is lined up with the short gap in the DIMM slot. Figure 10 shows how to sit the DIMM into its slot. To insert the DIMM, push down vertically on the module with even force, as shown in the photo. Do not shove one end in first; doing so will bend the DIMM pins.

To lock the DIMM into place, push the plastic clips on either end of the slot onto the notches in the ends of the DIMM (see Figure 11 on the following page). To remove your DIMM, simply pull the clips back, and pull up on the module.

Place the DIMMs in an anti-static bag as soon as you remove them to avoid static damage.

Finally, install your CPU.

Pentium II processors (233 through 400MHz) can be used on the Tsunami AT. Please refer to pages 27-29 for the correct CPU jumper settings for your board.

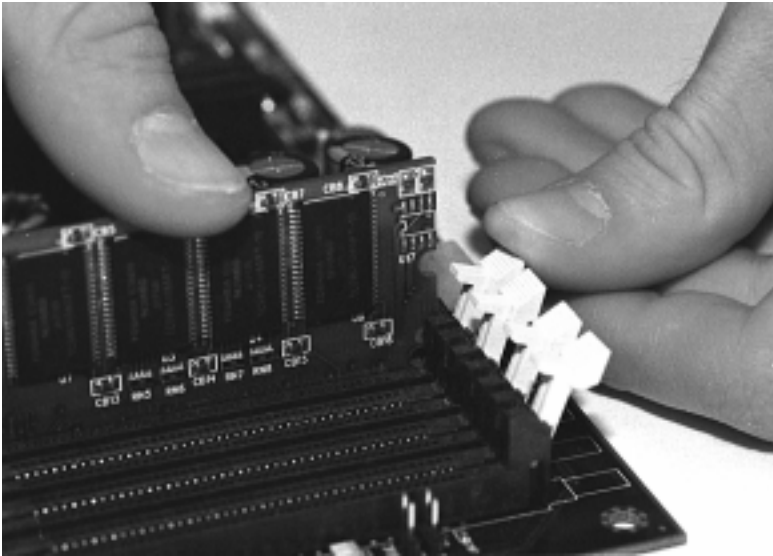


Figure 11

Remember:

- The CPU is a sensitive electronic component and it can easily be damaged by static electricity. Do not touch the CPU pins with your fingers.
- Before the CPU is installed, the mainboard must be placed on a flat surface. You should be able to insert the CPU with minimal, but firm, pressure. Do not press down hard on the CPU.

Currently, Intel produces two types of Pentium II processors: the active (or boxed) processor and the passive processor (see Figures 12 and 13 on the next page). These two types of processors are essentially the same in design; the only difference lies in their cooling methods. The active processor is equipped with a cooling fan and heat sink, while the passive processor is equipped with a heat sink alone. Both types of CPUs provide the user with the same performance, and both types can be installed in the Pentium II slot on the Tsunami AT board.

Installing CPU Retention Modules

Installation of a Pentium II processor requires a CPU retention module, which is first secured onto the motherboard.

To attach the retention module, place the motherboard on a flat surface. Locate the key pin on one end of the Pentium II slot on the board. Then carefully line

up the key notch on the retention module with the key pin on the Pentium II slot (the key pin on the Pentium II slot indicates the correct orientation of the CPU).



Figure 12



Figure 13

Drop the retention module (Figure 15 on the following page) down over the Pentium II slot so that the retention module sits flat against the motherboard. Tighten the screws in a clockwise manner to secure the module to the board. Warning: Do not overtighten the screws as you may damage the module and/or the motherboard.



Figure 14 Pentium II Slot Connector and Key Pin



Installing the Active Processor

When the retention module is securely installed, you are ready to plug in the CPU. Press down firmly on the CPU until you hear a “click” (see Figure 16 on the following page). This clicking sound indicates that the CPU is fully locked into the retention module. If you have an active processor, you will also need to connect the CPU’s cooling fan cable to the cooling fan power connector on the board.

Locate the cooling fan connector (e.g. FAN1) on the motherboard. Plug the CPU’s cooling fan cable into the cooling fan connector on the board. There will be a plastic clip assembly similar to that of the ATX power connector that will

force you to connect the fan cable correctly (see Figure 17 below).



Figure 15



Figure 16

INSTALL

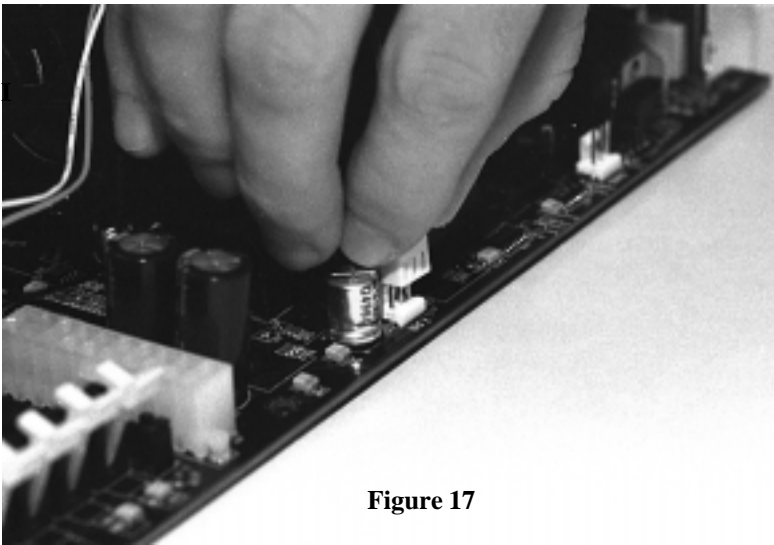


Figure 17

Installing the Passive Processor

The installation of the passive processor differs only slightly from that of the active processor. Your passive CPU package should contain one CPU retention module, one heat sink retention bracket with mounting locks, two mounting attachments, and one heat sink lock. Install the retention module as explained in the active processor section.

The heat sink mount (Figure 18 on the next page) has two pins on the bottom and four pins on the top. Notice that the bottom two pins are of different sizes. The size of the pins and the holes in the motherboard will determine the correct orientation. When the bracket is correctly installed, the four pins on top will be

right next to the Pentium II CPU slot.



Figure 18

Insert the heat sink mount into the holes on the motherboard. When the bracket is properly inserted into the holes on the motherboard, you will hear a clicking noise.

Align the CPU with the CPU retention module. Make sure the heat sink is lined up with the heat sink mount bracket. If you put the CPU in the wrong way, you may damage the CPU, the motherboard, and/or the CPU socket. Slowly press down on the CPU module until the CPU locks into place. You will hear a clicking noise when the CPU is locked securely into the module.

The heat sink lock (Figure 19) has four notches which will correspond to the four pins on the heat sink mounting bracket. Gently slide the lock between the heat sink and the heat sink mounting bracket until both sides of the lock are firmly secured. A clicking sound will be heard when the lock is securely fastened to the heat sink mounting bracket. To remove the lock from the heat sink mounting bracket, gently press the ends of the locks inward and pull.



Figure 19

Lock the heat sink mount to the board by inserting the two mounting locks (Figure 20) into the pins of the heat sink mounting bracket which are now below the mainboard. There will be a click when the locks are securely fastened.



Figure 20

Removing the CPU.

To remove the CPU, move the locks to the center of the CPU. A click will be heard when the CPU has been unlocked. Gently pull up on the CPU, taking care not to bend the motherboard or the CPU retention module.

To remove the lock from the retention module, gently press the ends of the locks inward and pull.

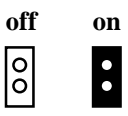
You are done.

Other than checking the jumper settings and cable connections and putting the case back on, you are done. Installing a new motherboard may sound difficult, but by following these directions, you should have a fairly uneventful time installing our products. If you do encounter problems, your dealer will be able to help you, or you can consult one of our many technical support resources (see page 8).

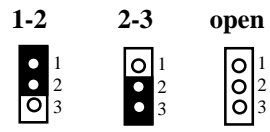
Setting Jumpers

In this manual, the terms “closed” and “on” are used when referring to jumpers (or jumper pins) that are active; “open” and “off” are used when referring to jumpers (or jumper pins) that are inactive. Jumpers and pins are connected by slipping the black plastic jumper connector overtop of two adjacent jumper pins. The metal rod inside the plastic shell bridges the gap between the two pins, completing the circuit. See the drawings below for examples of “on” and “off” pins and jumpers.

2 pin jumpers



3 (or more) pin jumpers



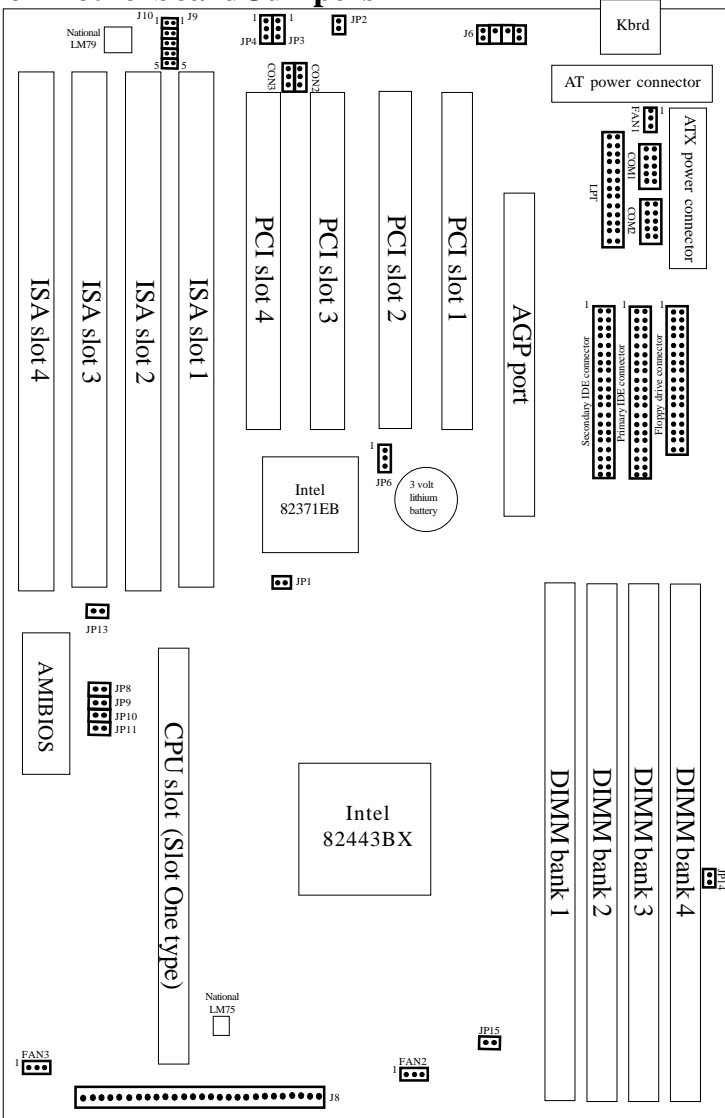
chapter 3

Onboard Resource Settings

Quick References for Jumpers

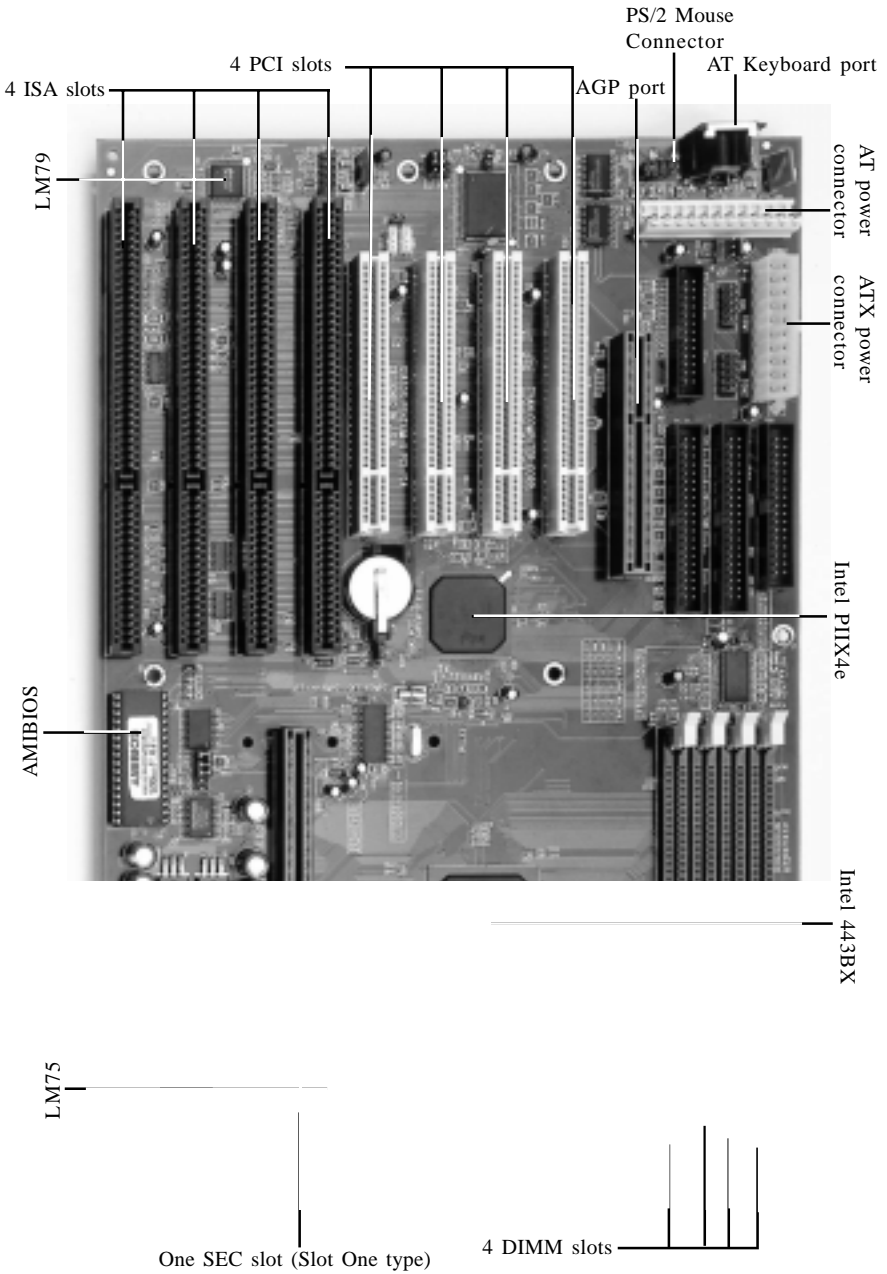
The tables on the following pages will help you set the jumpers for CPU speed, InfraRed, and external connector pin assignments, among others. The miniature motherboard maps will help you locate the jumpers on your board. A full-page map of the motherboard can be found on the facing page.

Map of Motherboard Jumpers



The number “1”s printed on the board next to jumpers of 3 pins or more indicate the position of pin 1 for that jumper.

TYAN Chapter 3
COMPUTER Onboard Resource Settings



CPU Settings for 66MHz Bus

Clock Speed	Mult	JP8	JP9	JP10	JP11
233MHz	x3.5	ON	OFF	OFF	ON
266MHz	x4	ON	ON	ON	OFF
300MHz	x4.5	ON	OFF	ON	OFF
333MHz	x5	ON	ON	OFF	OFF

CPU Settings for 100MHz Bus

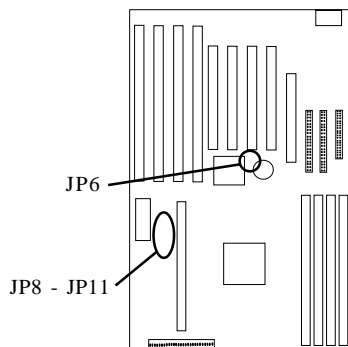
Clock Speed	Mult	JP8	JP9	JP10	JP11
350MHz	x3.5	ON	OFF	OFF	ON
400MHz	x4	ON	ON	ON	OFF
450MHz	x4.5	ON	OFF	ON	OFF
500MHz*	x5	ON	ON	OFF	OFF

* Due to CPU availability, this speed has not been tested.

The CPU speed is controlled by setting the bus speed (described in BIOS setup) and by setting the multiplier with the jumpers described above that are appropriate for your CPU and memory. You must have a 100MHz processor to run at a bus speed of 100MHz. Tyan does not recommend and is not responsible for functionality or damage to components caused by operating a CPU, memory or any bus at higher than rated speeds (overclocking).

CMOS Reset

	JP6
Default	1-2
Reset CMOS	2-3





Hardware CMOS & Password Reset

If you have been locked out of your system because you forgot your password or set the CMOS incorrectly, follow the instructions below.

1. Power off the system
2. Set jumper JP6 to pins 2 and 3 (see previous page for location of JP6).
3. Wait for 2 seconds, then return jumper JP6 to pins 1 and 2.
4. Power on the system again.

By following this procedure, you will erase your password and reset the CMOS to the BIOS defaults. InfraRed/Floppy Drive Settings

J8 External Connector Settings

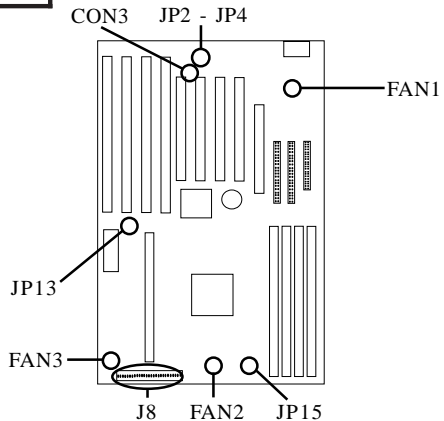
Pins	1-2	6-10	13-16	18-20	22-23	24-27
Function	Power On/Off	InfraRed	HDD LED	Power LED	Reset Switch	Speaker
Assignment	1=Power On/Off 2=GND	6=5V 8=IR RX 9=GND 10=IR TX	13=5V 15=LED- 16=LED+	18=Sleep LED 20=Power LED	22=GND 23=Reset	24=5V 26=Internal Speaker 27=Speaker-

InfraRed/Floppy Drive Settings

IR/FDD	JP2	JP3	JP4
2 FDD (Default)	ON	2-3	1-2
1 IR/1 FDD	OFF	1-2	2-3

Power Supply Type

	JP15	JP13
AT power supply	ON	OFF
ATX power supply	OFF	ON

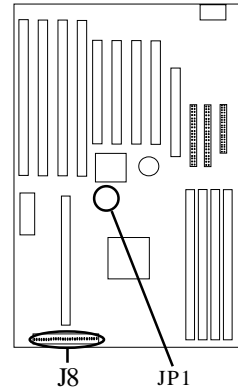


Other Pin Assignments

	1	2	3
CON3 (Wake-on LAN)	Standby 5V	GND	Wake (Power On, Active High)
FAN1-3	GND	VCC	Fan Monitor

Soft Power Connector

The Soft Power Connector is located on pins 1 and 2 of jumper block J8. The Tsunami AT uses the PIIX4e chip for power management, including turning on and off the system. If the Power Button Function option in the Power Management Menu is set to On/Off (which is the default), pressing the power button once, after the BIOS has booted up, will turn the system on and off. If the Power Button Function option is set to Suspend, pressing the power button once will wake the system or send it in to Suspend mode. In this case, you cannot turn the system off unless you shut down through the Windows operating system or you hold the power button down for four seconds. The soft power function requires an ATX power supply.



ONBOARD

Speaker Connector Installation

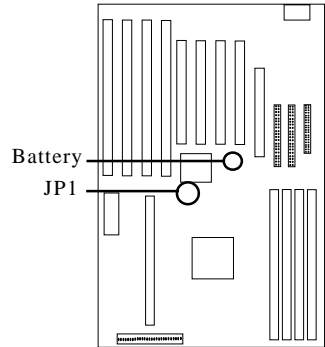
The Tsunami AT provides a 4-pin header to connect the speaker. The speaker is connected to pins 24-27 of jumper block J8.

Hardware Reset Switch Connector Installation

The Reset switch on your case's display panel provides you with the Hardware Reset function, which is the same as power on/off. The system will do a cold start after the Reset button is pushed. The Reset switch is a 2-pin connector and should be installed on pins 22 and 23 of jumper block J8.

External SMI

The EXTSMI (External System Management Interface) connector, JP1, is used by some plug-in cards. Certain applications associated with these plug-in cards use the interface for hardware control and queries.



Windows 95 Users:

You may encounter problems with some of the devices in the Intel 82371EB chipset. Neither the PCI Bridge nor the PCI Universal Serial Bus device IDs for this chipset (also called PIIX4e) are recognized by Windows 95. This is a software problem, not a hardware problem, and can be easily remedied by either upgrading to Windows 98 or installing the 82371EB patch on the Tyan BX Driver Diskette or CD. The patch can also be downloaded from the Tyan web or ftp site at <http://www.tyan.com/html/drivers.html> or at <ftp://download.intel.com/design/pcisets/busmastr/setupex.exe>. Note that USB requires Windows 95 OSR 2.1 or above; please contact Microsoft for the USB update.



CMOS RTC

The 440BX AGPset includes a Real Time Clock (RTC) circuit, which provides the date and time for the system. If the external battery for the RTC is low, it will prevent your system from POSTing, and you will not get a display. Normally the life span of an external battery is 2 years. If yours is running low, you will need to replace it with a new 3V lithium battery (Sony CR2032).

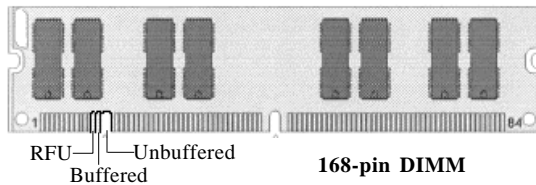
Flash EEPROM

The Tsunami AT uses flash memory to store BIOS programs. It can be updated as new versions of the BIOS become available. You can upgrade your BIOS easily using the Flash Writer Utility (see page 61).

RAM Installation

The Tsunami AT uses a 64-bit data path from memory to CPU and can accom-

moderate up to 1024MB of SDRAM. The 168-pin DIMMs must be of the 3.3V, **unbuffered** variety. The position of the notch in the DRAM key position will tell you whether or not a DIMM is unbuffered (see the figure below). All installed memory will be automatically detected, so there is no need to set any jumpers.



Some details of memory installation:

- At least one unbuffered DIMM must be installed for the system to POST.
- The mainboard supports 8MB, 16MB, 32MB, 64MB, 128MB, and 256MB SDRAM w/SPD and SDRAM+ECC DIMM modules.
- 66MHz or 100MHz SDRAM modules can be used, but you must use 100MHz SDRAMs if you wish to take advantage of the 100MHz Front Side Bus speed.

The table on the next page shows some of the possible memory configurations.

DIMM Bank 1	DIMM Bank 2	DIMM Bank 3	DIMM Bank 4	Total
8MBx1	0	0	0	8MB
8MBx1	8MBx1	0	0	16MB
8MBx1	8MBx1	8MBx1	0	24MB
16MBx1	8MBx1	8MBx1	0	32MB
16MBx1	16MBx1	8MBx1	8MBx1	48MB
16MBx1	16MBx1	16MBx1	0	48MB
32MBx1	16MBx1	16MBx1	0	64MB
32MBx1	32MBx1	16MBx1	16MB	96MB
32MBx1	32MBx1	32MBx1	32MB	128MB
64MBx1	32MBx1	32MBx1	0	128MB
64MBx1	64MBx1	32MBx1	0	160MB
64MBx1	64MBx1	64MBx1	0	192MB
128MBx1	64MBx1	64MBx1	0	256MB
128MBx1	128MBx1	64MBx1	0	320MB
128MBx1	128MBx1	128MBx1	0	384MB
128MBx1	128MBx1	256MBx1	0	512MB
128MBx1	256MBx1	256MBx1	0	640MB
256MBx1	256MBx1	256MBx1	0	768MB
256MBx1	256MBx1	256MBx1	256MBx1	1024MB

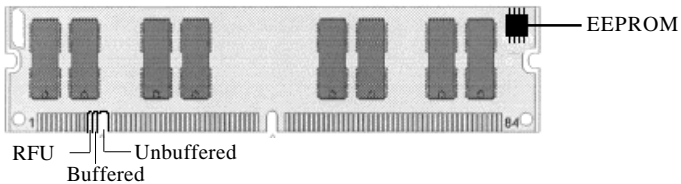
Cache Memory

Pentium II processors have the L2 (Level 2) cache built into their architecture, so there is no need for an L2 cache on the motherboard. The Pentium II processor has a physical L2 cache size of 512KB and a cacheable memory area of 512MB.

Frequently Asked Questions

Q: Why don't I get a display after I put in my old DIMM module?

A: The 440BX chipset requires the memory manufacturer to program an EEPROM chip with **SPD** (Serial Presence Detection) on the module in order for the BIOS to program the 440BX's timing registers properly. Your DIMM may not have the EEPROM chip on the module, or the EEPROM may not contain the correct program. Check with your memory vendor for details. The figure below shows a DIMM module with an EEPROM chip.



168-pin DIMM

Q: My system sometimes becomes unstable. How should I check the system?

A: The first thing to do is to check and see if you have any device conflict in address, IRQ, or DMA. If you are using Windows 95, the Device Manager is a good place to start. Please consult your operating system manual for details. Second of all, slowing down the memory timing in the BIOS's chipset setup section will help the situation, as well. Many memory modules are not suitable for high performance systems and are probably the main source of your problem.

Q: Can I use EDO DIMMs on this motherboard?

A: No. The Intel 440BX AGPset does not support EDO memory. The 440BX AGPset supports bus speeds of 100MHz, and EDO memory does not. You must use SDRAM (which does support 100MHz bus speeds) on this board.

Q: What is AGP?

A: AGP (Accelerated Graphics Port) is a new bus architecture for 3D graphics. The AGP slot eliminates the PCI bandwidth bottleneck by bypassing the PCI interface and accessing the system memory directly. Currently, the AGP supports 1X and 2X modes, which yield bandwidths of 264MB/s (at 33MHz bus speed) and 533MB/s (at 66MHz bus speed), respectively. Compare this with the mere 132MB/s (at 33MHz bus speed) that you get with the PCI bus.

Q: Does my operating system support AGP?

A: Currently, only Windows 98 and Windows NT 5.0 will have built-in support for AGP. Some AGP cards require Windows 95 OSR2.1 or a special driver from Intel. Please check with your graphics vendor for more details.

chapter 4

BIOS Configuration

The AMIBIOS Setup screen is shown below.

AMI BIOS EASY SETUP UTILITY Ver.1.16 (c)1998 American Megatrends, Inc. All Rights Reserved	
Main	Advanced Security Exit
System Date	Thu Oct 15 1998
System Time	12:55:37
Floppy Drive A	1.44 MB 3½
Floppy Drive B	Not Installed
Primary IDE Master	Auto
Primary IDE Slave	Auto
Secondary IDE Master	Auto
Secondary IDE Slave	Auto
Auto-Detect Hard Disks	[Enter]
Boot Sector Virus Protection	Disabled
<div style="border: 1px solid black; padding: 5px; float: right; width: 200px;"><p>Setup Help</p><p>Month: Jan - Dec Day: 01 - 31 Year: 1901 - 2099</p><p>- Previous Item - Next Item -® Select Menu</p></div>	
ESC:Exit Enter:Select F5:Setup Defaults F6:Original Values F10:Save & Exit	

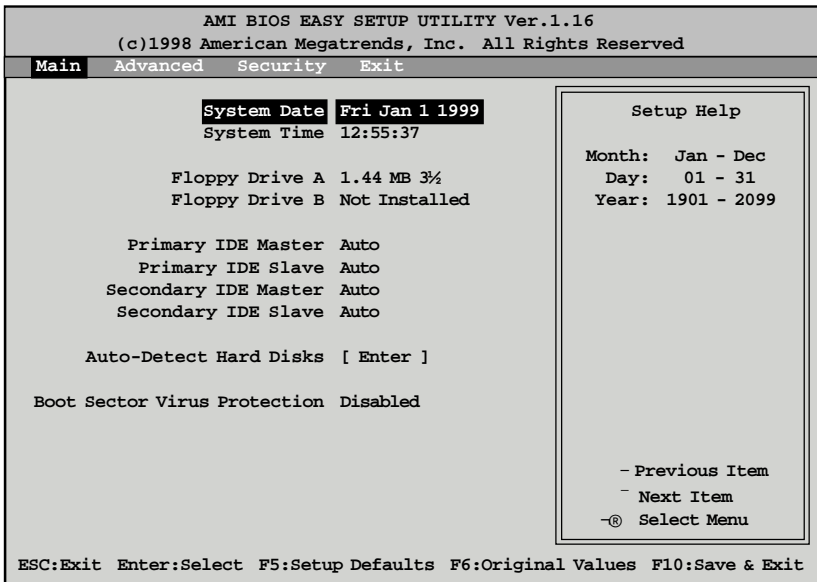
You can select a Setup option by using the following keyboard keys:

Key	Function
Tab	Moves from one box to the next
Arrow keys	Changes selections within a box
Enter	Opens highlighted selection

The pages which follow contain explanations of the settings for the AMIBIOS Setup menus. Drawings have been included for ease of reference. Overall, the AMIBIOS Setup program is easy to use, and fairly intuitive. Note that the graphics in the manual are simpler than those that appear on your screen.

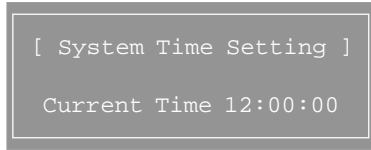
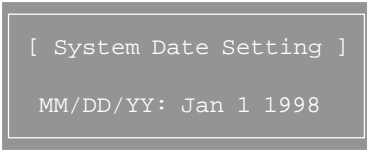
Main Setup

Select the AMIBIOS Setup options below by choosing Main Setup from the AMIBIOS Setup main menu. The Standard Setup menu screen is shown below.



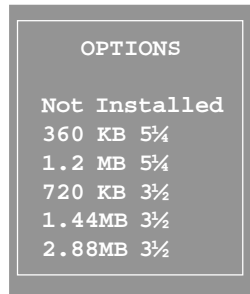
System Date/Time

You can type the date and time in directly, or select the portion of the date or time that you want to modify and adjust it using the - - cursor keys. The clock runs on a 24-hour cycle (i.e. 1:00 PM is 13:00).



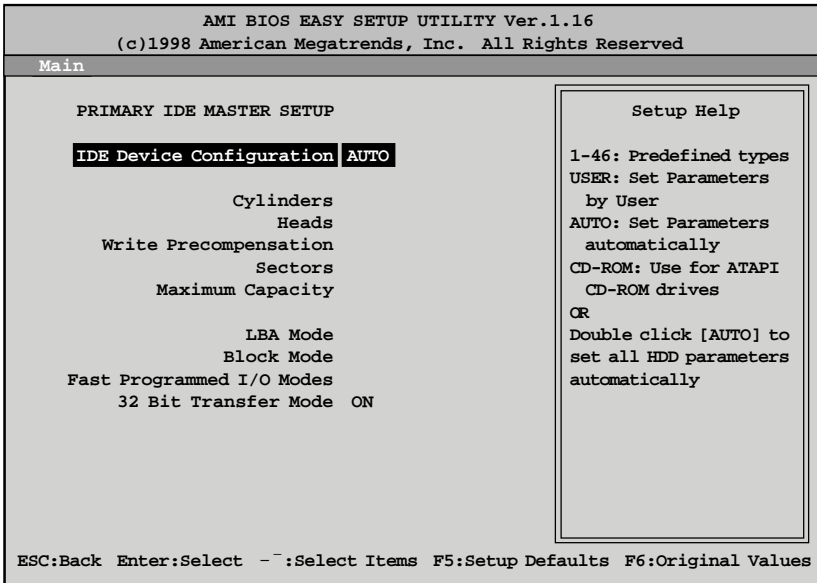
Floppy Drive A: and B:

Move the cursor to these fields via the arrow keys and select the floppy type. The settings are 360KB 5¼ inch, 1.2 MB 5¼ inch, 720KB 3½ inch, 1.44MB 3½ inch, or 2.88MB 3½ inch. If you are not sure what type of floppy drive you have, consult the documentation that came with your drive.



Primary Master, Primary Slave, Secondary Master, Secondary Slave

Select these options to configure the various drives. A screen with a list of drive parameters appears.



IDE Device Configuration: To have the BIOS autodetect the IDE drive, select Auto. Otherwise, you may choose one of the 46 drive types offered, or enter the parameters yourself (see Entering Drive Parameters on page 42). Consult the table below to see how to configure various drive types yourself.

Type	How to Configure
SCSI	Select <i>Type</i> . Select <i>Not Installed</i> on the drive parameter screen. The SCSI drivers provided by the SCSI manufacturer should allow you to configure the SCSI drive.
IDE	Select <i>Type</i> . Select <i>Auto</i> to let AMIBIOS determine the parameters. Click on <i>OK</i> when AMIBIOS displays the drive parameters. Select <i>LBA Mode</i> . Select <i>On</i> if the drive has a capacity greater than 540MB. Select <i>Block Mode</i> . Select <i>On</i> to allow block mode data transfers. Select <i>32-Bit Mode</i> . Select <i>On</i> to allow 32-bit data transfers. Select the <i>PIO Mode</i> . It is best to select <i>Auto</i> to allow AMIBIOS to determine the PIO mode. If you select a PIO mode that is not supported by the IDE drive, the drive will not work properly. If you are absolutely certain that you know the drive's PIO mode, select PIO mode 0-4, as appropriate.
CD-ROM	Select <i>Type</i> . Select <i>CDROM</i> . Click on <i>OK</i> when AMIBIOS displays the drive parameters.
Standard MFM	(MFM drives are older IDEs which use an encoding scheme that produces slower data access and less storage room.) Select <i>Type</i> . You must know the drive parameters. Select the drive type that exactly matches your drive's parameters.
Non-Standard MFM	Select <i>Type</i> . If the drive parameters do not match the drive parameters listed for drive types 1-46, select <i>User</i> and enter the correct hard disk drive parameters.

LBA/Large Mode: These modes make it possible for the BIOS to take advantage of the additional space on drives which are larger than 504MB. This can be autodetected (when you select Auto for Type), or you can turn the modes On or Off yourself.

Block Mode: If On, Block Mode automatically detects the optimal number of block read/writes per sector that the drive can support.

Fast Programmed I/O Modes: Programmed Input/Output is a method of transmitting data between devices that uses the system's CPU as part of the data path. There are 6 modes - 5 with their own transmission speed and 1 auto mode. To use modes 3 and 4, you must be using an Enhanced IDE drive.

PIO Mode	Data Transfer Rate (MBps)
Auto	
0	3.3
1	5.2
2	8.3
3	11.1
4	16.6

32bit Transfer Mode: If On, allows for the transmission of 32 bits in parallel (i.e. at the same time). If Off, only 16 bits will be transmitted in parallel.

Entering Drive Parameters

If you select User for the drive Type, you can enter the hard disk drive parameters yourself. The drive parameters are as follows:

Parameter	Description
Type	The number for a drive with certain identification parameters (see the next page for a table of drive types).
Cylinders (Cyl)	The number of cylinders in the disk drive.
Heads (Hd)	The number of heads.
Write Precompensation (WP)	The actual physical size of a sector gets progressively smaller as the track diameter diminishes. Yet, each sector must still hold 512 bytes. Write precompensation circuitry on the hard disk compensates for the physical difference in sector size by boosting the write current for sectors on inner tracks. This parameter is the track number on the disk surface where write precompensation begins.
Sectors (Sec)	The number of sectors per track. MFM drives have 17 sectors per track. RLL drives have 26 sectors per track. ESDI drives have 34 sectors per track. SCSI and IDE drives have even more sectors per track.
Size	The formatted capacity of the drive is the number of heads times the number of cylinders times the number of sectors per track times 512 (bytes per sector).

Auto-Detect Hard Disks

This option lets the system detect your hard disk(s) automatically for your convenience.

Boot Sector Virus Protection

The available settings for this option are 'Enable' and 'Disable'.

Default Settings

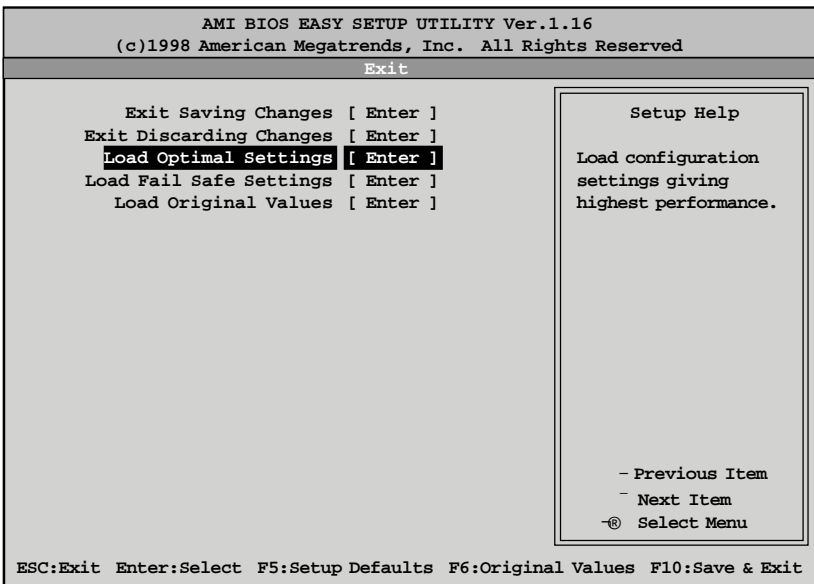
Every option in AMIBIOS Setup contains two default values: a Fail-Safe default and the Optimal default value. You can also choose to restore the original BIOS settings (i.e. those that your board came with) at any time. These options can be found in the 'Exit' menu.

Optimal Defaults

The Optimal default values provide optimum performance settings for all devices and system features.

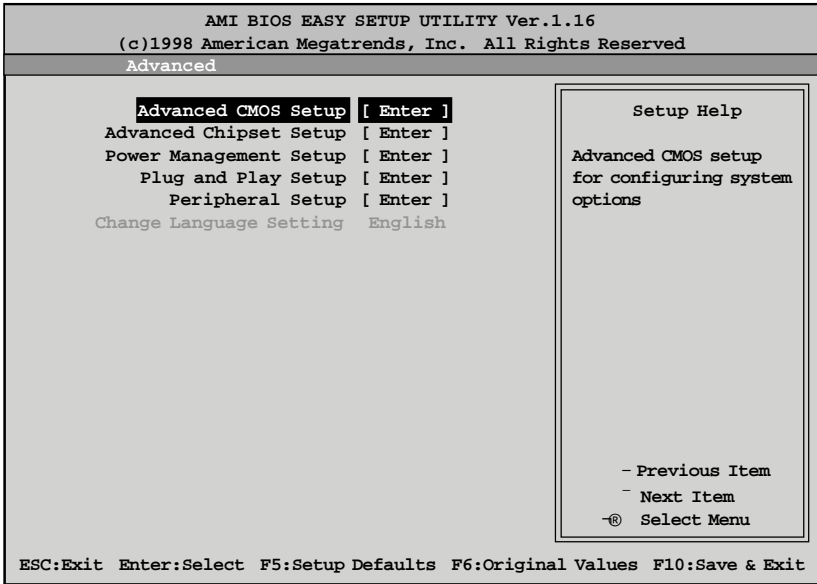
Fail-Safe Defaults

The Fail-Safe default settings consist of the safest set of parameters. Use them if the system is behaving erratically. They should always work but do not provide optimal system performance characteristics.



Advanced CMOS Setup

The Advanced Setup options included in the AMIBIOS Setup for the Tsunami AT are described in this chapter. Select Advanced Setup from the AMIBIOS Setup main menu to display the Advanced Setup options.



Advanced CMOS Setup Default Settings Chart

Setting Option	Optimal Default	Fail-Safe Default
Quick Boot	Disabled	Disabled
Primary Master ARMD Emulated as	Auto	Auto
Primary Slave ARMD Emulated as	Auto	Auto
Secondary Master ARMD Emulated as	Auto	Auto
Secondary Slave ARMD Emulated as	Auto	Auto
1st Boot Device	Floppy	Floppy
2nd Boot Device	1st IDE-HDD	1st IDE-HDD
3rd Boot Device	AT API CDR OM	AT API CDR OM
Try Other Boot Devices	Yes	Yes
Floppy Access Control	Read-Write	Read-Write
Hard Disk Access Control	Read-Write	Read-Write

Settings Chart (Continued)

Setting Option	Optimal Default	Fail-Safe Default
S.M.A.R.T. for Hard Disks	Disabled	Disabled
Boot Up Num-Lock	On	On
PS/2 Mouse Support	Enabled	Enabled
Primary Display	VGA/EGA	VGA/EGA
Password Check	Setup	Setup
Boot to OS/2	No	No
Internal Cache	WriteBack	WriteBack
System BIOS Cacheable	Enabled	Disabled
Cache Bus ECC	Enabled	Enabled
Default Primary Video	AGP	AGP
C000,16K Shadow	Cached	Cached
C400,16K Shadow	Cached	Cached
C800,16K Shadow	Disabled	Disabled
CC00,16K Shadow	Disabled	Disabled
D000,16K Shadow	Disabled	Disabled
D400,16K Shadow	Disabled	Disabled
D800,16K Shadow	Disabled	Disabled
DC00,16K Shadow	Disabled	Disabled

BIOS

Advanced Setup

Quick Boot

Set this option to Enabled to instruct AMIBIOS to boot quickly when the computer is powered on. This option replaces the old Above 1 MB Memory Test Advanced Setup option. The settings are:

Setting	Description
Disabled	AMIBIOS tests all system memory. AMIBIOS waits up to 40 seconds for a READY signal from the IDE hard disk drive. AMIBIOS waits for .5 seconds after sending a RESET signal to the IDE drive to allow the IDE drive time to get ready again. AMIBIOS checks for a key press and runs AMIBIOS Setup if the key has been pressed.
Enabled	AMIBIOS does not test system memory above 1MB. AMIBIOS does not wait up to 40 seconds for a READY signal from the IDE hard disk drive. If a READY signal is not received immediately from the IDE drive, AMIBIOS does not configure that drive. AMIBIOS does not wait for .5 seconds after sending a RESET signal to the IDE drive to allow the IDE drive time to get ready again. You cannot run AMIBIOS Setup at system boot, because there is no delay for the <i>Hit to run Setup</i> message.

Pri/Sec Master/Slave ARMD Emulated as

ATAPI Removable Media Disks (e.g. ZIP drives) are hybrid drives. They are removable, and can be used as floppy drives, but also have great capacity and so are sometimes used as hard drives. These four options ensure that, if you have an ARMD attached as a master or slave device, it can be properly detected by the system. The settings are Auto, Floppy, and Hard Disk.

1st Boot Device

This option sets the type of device for the first boot drive that the AMIBIOS attempts to boot from after AMIBIOS POST completes. The settings are Disabled, 1st IDE-HDD, 2nd IDE-HDD, 3rd IDE-HDD, 4th IDE-HDD, Floppy, ARMD-FDD, ARMD-HDD, ATAPI CDROM, SCSI, NETWORK, and I₂O.

2nd Boot Device

This option sets the type of device for the second boot drive that the AMIBIOS attempts to boot from after AMIBIOS POST completes. The settings are Disabled, 1st IDE-HDD, 2nd IDE-HDD, 3rd IDE-HDD, 4th IDE-HDD, Floppy, ARMD-FDD, ARMD-HDD, ATAPI CDROM, and SCSI.

3rd Boot Device

This option sets the type of device for the third boot drive that the AMIBIOS attempts to boot from after AMIBIOS POST completes. The settings are Disabled, 1st IDE-HDD, 2nd IDE-HDD, 3rd IDE-HDD, 4th IDE-HDD, Floppy, ARMD-FDD, ARMD-HDD, ATAPI CDROM.

Try Other Boot Devices

Set this option to Yes to instruct AMIBIOS to attempt to boot from any other drive in the system if it cannot find a boot drive among the drives specified in the 1st Boot Device, 2nd Boot Device, and 3rd Boot Device options. The settings are Yes or No.

Floppy Access Control

This option specifies the read-write access that is set when booting from a floppy drive. The settings are Read-Write or Read-Only.

Hard Disk Access Control

This option specifies the read-write access that is set when booting from a hard disk drive. The settings are Read-Write or Read-Only.

S.M.A.R.T. for Hard Disks

Set this option to Enabled to permit AMIBIOS to use the SMART (System

Management and Reporting Technologies) protocol for reporting server system information over a network. Enabling this feature allows you to back up your data when your hard disk is about to fail. The settings are Enabled or Disabled.

Boot Up Num-Lock

Set this option to Off to turn the Num Lock key off when the computer is booted so you can use the arrow keys on both the numeric keypad and the keyboard. The settings are On or Off.

PS/2 Mouse Support

Set this option to Enabled to enable AMIBIOS support for a PS/2-type mouse. The BIOS will allocate IRQ12 for the PS/2 mouse. The settings are Enabled or Disabled.

Primary Display

This option configures the type of monitor attached to the computer. The settings are Absent, VGA/EGA, CGA40x25, CGA80x25, or Mono.

Password Check

This option enables password checking every time the system boots or when you run AMIBIOS Setup. If Always is chosen, a user password prompt appears every time the computer is turned on. If Setup is chosen, the password prompt appears if AMIBIOS is executed.

Boot To OS/2

Set this option to Yes if you are running an OS/2 operating system and using more than 64 MB of system memory on the motherboard. The settings are Yes or No.

Internal Cache

This option sets the type of caching algorithm used by the L1 internal cache memory on the CPU. The settings are Disabled, WriteThru, or WriteBack.

System BIOS Cacheable

When set to Enabled, the contents of the F0000h system memory segment can be read from or written to cache memory. The contents of this memory segment are copied from the BIOS ROM to system RAM for faster execution. The settings are Enabled or Disabled. The Optimal default setting is Enabled.

Cache Bus ECC

When Enabled, this option permits ECC error checking on the L2 cache bus. This ensures that cached data is not improperly altered. The settings are Enabled or Disabled.

Default Primary Video

This option sets the primary video card as either AGP (Accelerated Graphics Port) card or a regular PCI video card. The settings are AGP or PCI.

MPS Revision

This option sets the Multi-Processor Symmetry. Then settings are 1.1 or 1.4.

C000,16K Shadow and C400,16K Shadow

These options specify how the 32 KB of video ROM at C0000h is treated. The settings are:

Setting	Description
Disabled	The contents of the video ROM are not copied to RAM.
Enabled	The contents of the video ROM area from C000h-C7FFFh are copied (shadowed) from ROM to RAM for faster execution.
Cached	The contents of the video ROM area from C000h-C7FFFh are copied from ROM to RAM and can be written to or read from cache memory.

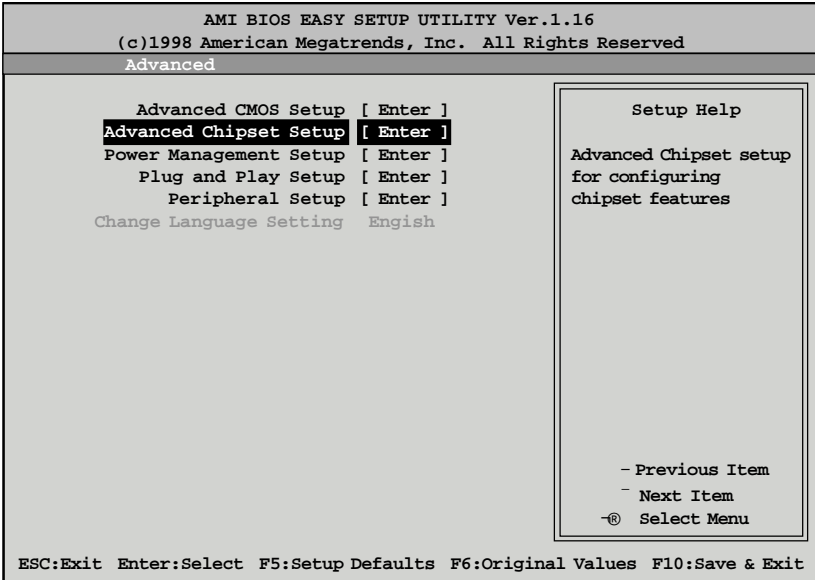
C800,16K Shadow; CC00,16K Shadow; D000,16K Shadow; D400,16K Shadow; D800, 16K Shadow; and DC00,16K Shadow

These options enable shadowing of the contents of the ROM area named in the option. The ROM area not used by ISA adapter cards is allocated to PCI adapter cards. The settings are:

Setting	Description
Disabled	The contents of the video ROM are not copied to RAM.
Enabled	The contents of the designated ROM area are copied (shadowed) from ROM to RAM for faster execution.
Cached	The contents of the designated ROM area are copied from ROM to RAM and can be written to or read from cache memory.

Chipset Setup

Choose Chipset Setup on the AMIBIOS Setup main menu. All Chipset Setup options are then displayed. AMIBIOS Setup can be customized. AMIBIOS Setup can be customized via AMIBCP. See the AMIBIOS Utilities Guide for additional information.



Advanced Chipset Setup Default Settings Chart

Setting Option	Optimal Default	Fail-Safe Default
USB Function	Disabled	Disabled
*USB KB/Mouse Legacy Support	Disabled	Disabled
*Port 64/60 Emulation	Disabled	Disabled
SERR#	Disabled	Disabled
PERR#	Disabled	Disabled
WSC# Handshake	Enabled	Enabled
USWC Write Post	Enabled	Enabled
Master Latency Timer (Clks)	64	64
Multi-Trans Timer (Clks)	32	32
PCI1 to PCI0 Access	Disabled	Disabled
Method of Memory Detection	Auto & SPD	Auto & SPD
DRAM Integrity Mode	ECC Hardware	ECC Hardware

Settings Chart (continued)

Setting Option	Optimal Default	Fail-Safe Default
DRAM Refresh Rate	15.6 us	15.6 us
Memory Hole	Dis abled	Dis abled
SDRAM RAS# to CAS# Delay	3S CLKs	3S CLKs
SDRAM RAS# Precharge	3S CLKs	3S CLKs
Power Down SDRAM	Dis abled	Dis abled
ACPI Control Register	Dis abled	Dis abled
Gated Clock	Dis abled	Dis abled
Graphics Aperture Size	64 MB	64 MB
Search for MDA Resources	Yes	Yes
AGP Multi-Trans Timer (AGP Clks)	32	Dis abled
AGP Low-Priority Timer (Clks)	16	Dis abled
AGP SERR	Dis abled	Dis abled
AGP Parity Error Response	Dis abled	Dis abled
8bit I/O Recovery Time	Dis abled	Dis abled
16bit I/O Recovery Time	Dis abled	Dis abled
PIIX4 SERR#	Dis abled	Dis abled
USB Passive Release	Enabled	Enabled
PIIX4 Passive Release	Enabled	Enabled
PIIX4 Delayed Transaction	Dis abled	Dis abled
Type F DMA Buffer Control1	Dis abled	Dis abled
Type F DMA Buffer Control2	Dis abled	Dis abled
DMA-0 Type	Normal ISA	Normal ISA
DMA-1 Type	Normal ISA	Normal ISA
DMA-2 Type	Normal ISA	Normal ISA
DMA-3 Type	Normal ISA	Normal ISA
DMA-5 Type	Normal ISA	Normal ISA
DMA-6 Type	Normal ISA	Normal ISA
DMA-7 Type	Normal ISA	Normal ISA

* Setting option not selectable.

USB Function

Set this option to Enabled to enable USB (Universal Serial Bus) support. The settings are Enabled or Disabled.

USB KB/Mouse Legacy Support

Set this option to Enabled to enable support for older keyboards and mouse devices if the USB Function option is set to Enabled. The settings are Enabled or Disabled.

Port 64/60 Emulation

Setting this option to Enabled allows a USB keyboard to act like a legacy keyboard. If this option is not Enabled, USB keyboard lights will not work under Windows NT. With other operating systems, a USB keyboard will work normally with this option Disabled. The settings are Enabled or Disabled.

SERR#

Set this option to Enabled to enable the SERR# signal on the bus. The settings are Enabled or Disabled.

PERR#

Set this option to Enabled to enable the PERR# signal on the bus. The settings are Enabled or Disabled. The Optimal and Fail-safe default settings are Disabled.

WSC# Handshake

Set this option to Enabled to enable handshaking for the WSC# signal. Handshaking is a form of encryption; see the Glossary for more information. The settings are Enabled or Disabled.

USWC Write Post

This option sets the status of USWC posted writes to I/O. USWC is a type of memory that is used by VGA devices. The settings are:

Setting	Description
Enabled	USWC posted writes to I/O are enabled.
Disabled	USWC posted writes to I/O are disabled.

BX Master Latency Timer (Clks)

This option specifies the master latency timer (in PCI clocks) for devices in the computer. The settings are Disabled, 32, 64, 96, 128, 160, 192, or 224.

Multi-Trans Timer (Clks)

This option specifies the multi-trans latency timings (in PCI clocks) for devices in the computer. The settings are Disabled, 32, 64, 96, 128, 160, 192, or 224.

PCI1 to PCI0 Access

Set this option to Enabled to enable access between two different PCI buses (PCI1 and PCI0). The settings are Enabled or Disabled.

Method of Memory Detection

This option determines how your system will detect the type of system memory you have installed. Options are Auto+SPD or Auto only.

DRAM Integrity Mode

This option sets the type of system memory checking. The settings are:

Setting	Description
Non ECC	No error checking or error reporting is done.
EC	Errors are detected, but no corrections will be made.
ECC Hardware	Errors are detected, and single bit errors are corrected.

DRAM Refresh Rate

This option specifies the interval between refresh signals to DRAM system memory. The settings are 15.6 us (microseconds), 31.2 us, 62.4 us, 124.8 us, or 249.6 us.

Memory Hole

This option specifies the location of an area of memory that cannot be addressed on the ISA bus. The settings are Disabled, 512KB-640KB, or 15MB-16MB.

SDRAM RAS# to CAS# Delay

This option specifies the length of the a inserted between the RAS and CAS signals of the DRAM system memory access cycle if SDRAM is installed. The settings are Auto, 2 SCLKs or 3 SCLKs. The Optimal default setting is Auto.

SDRAM RAS# Precharge

(CHANGE) This option specifies the length of the RAS precharge part of the DRAM system memory access cycle when SDRAM system memory is installed in this computer. The settings are Auto, 2 SCLKs, or 3 SCLKs.

Power Down SDRAM

If this option is set to Enabled, the SDRAM Power Down feature is enabled. The settings are Enabled or Disabled.

ACPI Control Register

Set this option to Enabled to enable the ACPI (Advanced Configuration and Power Interface) control register. The settings are Enabled or Disabled. The Optimal and Fail-safe default settings are Enabled.

Gated Clock

Set this option to Enabled to enable the gated clock. The settings are Enabled or Disabled.

Graphics Aperture Size

This option specifies the amount of system memory that can be used by the Accelerated Graphics Port (AGP). The settings are 4 MB, 8 MB, 16 MB, 32 MB, 64 MB, 128 MB, or 256 MB.

Search for MDA Resources

Set this option to Yes to let AMIBIOS search for MDA resources. The settings are Yes or No.

AGP Multi-Trans Timer (AGP Clks)

This option sets the AGP multi-trans timer. The settings are in units of AGP Clocks. The settings are Disabled, 32, 64, 96, 128, 160, 192, or 224.

AGP Low-Priority Timer (Clks)

This option sets the AGP low priority timer. The settings are in units of AGP Clocks. The settings are Disabled, 16, 32, 48, 64, 80, 96, 112, 128, 144, 176, 192, 208, 224, or 240.

AGPSERR

Set this option to Enabled to enable the AGP SERR signal. The settings are Enabled or Disabled.

AGP Parity Error Response

Set this option to Enabled to enable AGP parity error response. The settings are Enabled or Disabled.

8bit I/O Recovery Time

This option specifies the length of a delay inserted between consecutive 8-bit I/O operations. The settings are Disabled and from 1 to 8 Sysclk (system clocks) in increments of one.

16bit I/O Recovery Time

This option specifies the length of a delay inserted between consecutive 16-bit I/O operations. The settings are Disabled and from 1 to 4 Sysclk (system clocks) in increments of one.

PIIX4SERR#

Set this option to Enabled to enable the SERR# signal for the Intel PIIX4 chip. The settings are Enabled or Disabled.

USB Passive Release

Set this option to Enabled to enable passive release for USB. The settings are Enabled or Disabled.

PIIX4 Passive Release

Set this option to Enabled to enable passive release for the Intel PIIX4e chip. This option must be Enabled to provide PCI 2.1 compliance. The settings are Enabled or Disabled.

PIIX4DELAYED TRANSACTION

Set this option to Enabled to enable delayed transactions for the Intel PIIX4 chip. This option must be Enabled to provide PCI 2.1 compliance. The settings are Enabled or Disabled.

TypeF DMA Buffer Control1 and 2

These options specify the DMA channel where TypeF buffer control is implemented. The settings are Disabled, Channel-0, Channel-1, Channel-2, Channel-3, Channel-5, Channel-6, or Channel-7.

DMA-n Type

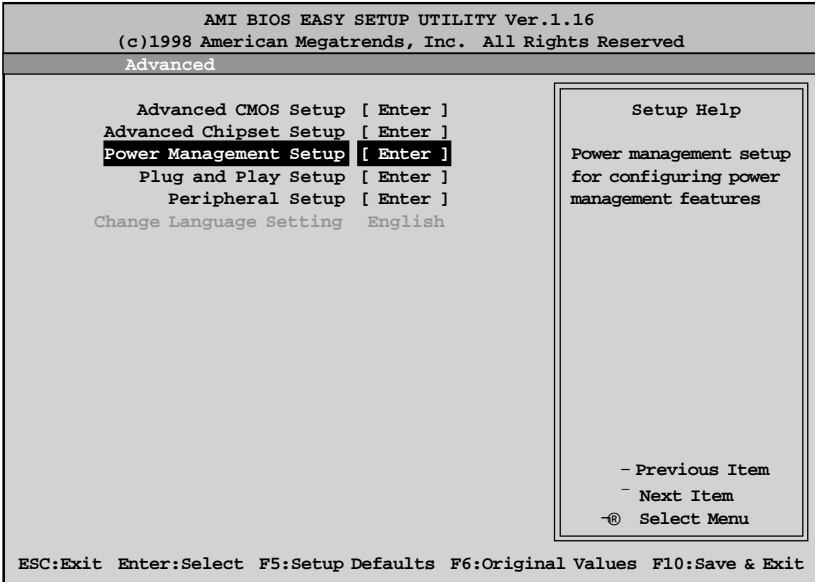
These options specify the bus that the specified DMA channel can be used on. The settings are Normal ISA, PC/PCI, or Distributed.

CPU Bus Frequency

This option provides selective CPU Bus Frequency; however, it is strongly recommended that the default setting (Auto) be selected. Unpredictable situations may arise if the Intel default CPU bus speed is not used. The settings are Auto, 66.8MHz, 68.5MHz, 75MHz, 83.3MHz, 100MHz, 103MHz, or 112MHz.

Power Management Setup

The AMIBIOS Setup options described in this section are selected by choosing Power Management Setup from the AMIBIOS Setup main menu.



BIOS

Power Management Setup Default Settings Chart

Setting Option	Optimal Default	Fail-Safe Default
ACPI Aware O/S	No	No
Power Management / APM	Enabled	Enabled
Power Button Function	On/Off	On/Off
Green P/C Monitor Power State	Suspend	StandBy
Video Power Down Mode	Suspend	Disabled
Hard Disk Power Down Mode	Suspend	Disabled
Hard Disk Time Out (Minute)	Disabled	Disabled
Power Saving Type	Sleep	Sleep
Standby / Suspend Timer Unit	4 min	4 min
Standby Time Out	Disabled	Disabled
Suspend Time Out	Disabled	Disabled
Slow Clock Ratio	50% - 62.5%	50% - 62.5%
Display Activity	Ignore	Ignore

Setting Option	Optimal Default	Fail-Safe Default
Device6 (Serial port 1)	Monitor	Monitor
Device7 (Serial port 2)	Monitor	Monitor
Device8 (Parallel port)	Monitor	Monitor
Device5 (Floppy disk)	Monitor	Monitor
Device0 (Primary master IDE)	Monitor	Monitor
Device1 (Primary slave IDE)	Monitor	Monitor
Device2 (Secondary master IDE)	Monitor	Monitor
Device3 (Secondary slave IDE)	Monitor	Monitor
Power Supply Type	AT	AT
LAN Wake-up	Disabled	Disabled
PC 98 Power LED	Disabled	Disabled
Fan OFF at Suspend	Enabled	Enabled
RTC Wake-up	Disabled	Disabled
*Hour	N/A	N/A

* Setting option not selectable.

ACPI Aware O/S

Set this option to Yes to enable Advanced Configuration and Power Interface (ACPI) BIOS for an ACPI-aware operating system.

Power Management/APM

Set this option to Enabled to enable the chipset power management and APM (Advanced Power Management) features. The settings are Enabled or Disabled.

Power Button Function

This option specifies how the power button mounted externally on the computer chassis is used. See Soft Power Connector on page 31 for more information. The settings are shown in the table below.

Setting	Description
On/Off	Pushing the power button turns the computer on or off.
Suspend	Pushing the power button places the computer in Suspend mode or Full On power mode.

Green PC Monitor Power State

This option specifies the power state that the green PC-compliant video monitor enters when AMIBIOS places it in a power saving state after the

specified period of display inactivity has expired. The settings are Off, Stand By, or Suspend.

Video Power Down Mode

This option specifies the power state that the video subsystem enters when AMIBIOS places it in a power saving state after the specified period of display inactivity has expired. The settings are Stand By, Suspend, or Disabled.

Hard Disk Power Down Mode

This option specifies the power conserving state that the hard disk drive enters after the specified period of hard drive inactivity has expired. The settings are Disabled, Stand By, or Suspend.

Hard Disk Time Out (Minute)

This option specifies the length of a period of hard disk drive inactivity. When this length of time expires, the computer enters power-conserving state specified in the Hard Disk Power Down Mode option (see above). The settings are Disabled, and from 1 to 15 minutes, in one minute intervals.

Power Saving Type

There are several types of sleeping states within the general sleep state. This option allows you to choose how “asleep” you want your system to be. In deeper sleep modes, more energy is saved. However, upon waking up, the system must “reorient” itself, and reestablish control over the system’s sleeping components. The settings are POS, Sleep, Stop Clock, and Deep Sleep. POS is the lightest sleep mode; Deep Sleep is the heaviest.

Standby/Suspend Timer Unit

This option specifies the unit of time used for the Standby and Suspend time out periods. The settings are 4 msec, 4 sec, 32 sec, or 4 min.

Standby Time Out

This option defines the length of time that the system, while in Full On state, must be inactive before it enters Standby mode. The settings are Disabled and from 4 minutes to 508 minutes, in increments of 4 minutes.

Suspend Time Out

This option defines the length of time that the system, while in Standby mode, must be inactive before it enters Suspend mode. The settings are Disabled and from 4 minutes to 508 minutes, in increments of 4 minutes.

Slow Clock Ratio

This option specifies the speed at which the system clock runs in the Standby Mode power saving state. The settings are expressed as a percentage of the normal CPU clock speed. The settings are 0-12.5%, 12.5%-25%, 25%-37.5%, 37.5%-50%, 50%-62.5%, 62.5%-75%, or 75-87.5%.

Display Activity

When set to Monitor, this option enables event monitoring on the video display. If set to Monitor and the computer is in a power saving state, display activity will cause the system to enter the Full On state. AMIBIOS reloads the Standby and Suspend time-out timers if display activity occurs. The settings are Monitor or Ignore.

Device *n* (Device identity)

When set to Monitor, these options enable event monitoring on the specified hardware interrupt request line. If set to Monitor and the computer is in a power saving state, any activity on the IRQ line will cause the system to enter the Full On state. AMIBIOS reloads the Standby and Suspend time-out timers if activity occurs on the specified IRQ line. The settings for each of these options are Monitor or Ignore.

LAN Wake-up

When this option is Enabled, the system will wake up when a signal is received on the Wake-on LAN header. In order for this wake up function to work, the system must have been brought up at least past the POST before it was last shut down (i.e. if you turn the system off before the POST, the registry will not be set, and the system will not be able to wake up using this function). This function requires an ATX 2.01 compliant power supply with 5V standby (STB5V) current of at least 800mA. The settings are Enabled or Disabled.

PC98 Power LED

When this option is Enabled, your power LED will turn to yellow when your system is in Suspend mode. Note that if you do not have a two-color LED, your LED will turn off when the system is in Suspend mode if this option is set to Enabled. The settings are Enabled or Disabled.

FAN OFF at Suspend

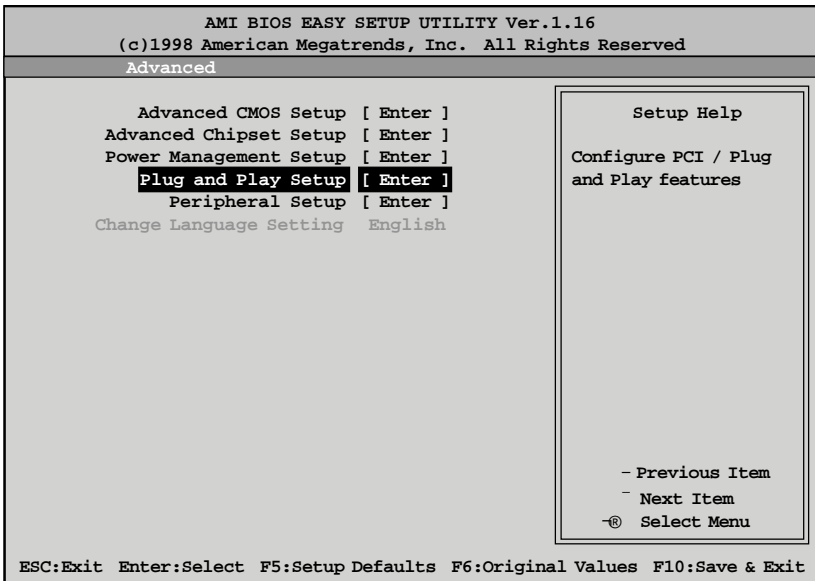
If this option is Enabled, the CPU fan will turn off when the system is in Suspend mode. If Disabled, the CPU fan will remain on while the system is in Suspend mode. The settings are Enabled or Disabled.

RTC Wake-up

If Enabled, this option allows you to set an hour and minute for the system to wake up. The next two fields allow you to choose the wake up time. Note that the time fields will not be available if this option is set to Disabled. In order for this wake up function to work, the system must have been brought up at least past the POST before it was last shut down (i.e. if you turn the system off before the POST, the registry will not be set, and the system will not be able to wake up using this function). The settings are Enabled or Disabled.

Plug and Play Setup

Choose PCI/Plug and Play Setup from the AMIBIOS Setup screen to display the PCI and Plug and Play Setup options, described below.



Plug and Play Setup Default Settings Chart

Setting Option	Optimal Default	Fail-Safe Default
Plug and Play Aware O/S	Yes	Yes
PCI Latency Timer (PCI Clocks)	64	64
PCI VGA Palette Snoop	Disabled	Disabled
Allocate IRQ to PCI VGA	Yes	Yes
PCI IDE Bus Master	Disabled	Disabled
Off Board PCI IDE Card	Auto	Auto
*Off Board PCI IDE Primary IRQ	Disabled	Disabled
*Off Board PCI IDE Secondary IRQ	Disabled	Disabled
PCI Slot 1 IRQ Priority	Auto	Auto
PCI Slot 2 IRQ Priority	Auto	Auto
PCI Slot 3 IRQ Priority	Auto	Auto
PCI Slot 4 IRQ Priority	Auto	Auto
DMA Channel 0	PNP	PNP
DMA Channel 1	PNP	PNP
DMA Channel 3	PNP	PNP
DMA Channel 5	PNP	PNP
DMA Channel 6	PNP	PNP
DMA Channel 7	PNP	PNP
IRQ3	PCI/PnP	PCI/PnP
IRQ4	PCI/PnP	PCI/PnP
IRQ5	PCI/PnP	PCI/PnP
IRQ7	PCI/PnP	PCI/PnP
IRQ9	PCI/PnP	PCI/PnP
IRQ10	PCI/PnP	PCI/PnP
IRQ11	PCI/PnP	PCI/PnP
IRQ12	PCI/PnP	PCI/PnP
IRQ14	PCI/PnP	PCI/PnP
IRQ15	PCI/PnP	PCI/PnP

* Setting option is not selectable

Plug and Play Aware O/S

Set this option to Yes to inform AMIBIOS that the operating system can handle plug and Play (PnP) devices. The settings are No or Yes.

PCI Latency Timer (PCI Clocks)

This option specifies the latency timings (in PCI clocks) for PCI devices installed in the PCI expansion slots. The settings are 32, 64, 96, 128, 160, 192, 224, or 248.

PCI VGA Palette Snoop

When this option is set to Enabled, multiple VGA devices operating on different buses can handle data from the CPU on each set of palette registers on every video device. Bit 5 of the command register in the PCI device configuration space is the VGA Palette Snoop bit (0 is disabled). For example, if there are two VGA devices in the computer (one PCI and one ISA) and this field is set for:

Setting	Description
Disabled	Data read and written by the CPU is only directed to the PCI VGA device's palette registers.
Enabled	Data read and written by the CPU is directed to the both the PCI VGA device's palette registers and the ISA VGA device palette registers, permitting the palette registers of both devices to be identical.

This option must be set to Enabled if any ISA adapter card installed in the system requires VGA palette snooping.

Allocate IRQ to PCI VGA

Set this option to Yes to allocate an IRQ to the VGA device on the PCI bus. The settings are Yes or No.

PCI IDE BusMaster

Set this option to Enabled to specify that the IDE controller on the PCI bus has bus mastering capability. The settings are Disabled or Enabled.

OffBoard PCI IDE Card

This option specifies whether or not an offboard PCI IDE controller adapter card is used in the computer, and where it is installed. If an offboard PCI IDE controller is used, the motherboard onboard IDE controller is automatically disabled. The settings are Auto and Slot1 through Slot6. If Auto is selected, AMIBIOS automatically determines the correct setting (including using the onboard controller if no offboard controller card is detected). This option forces IRQ 14 and 15 to a PCI slot on the PCI local bus. This is necessary to

support non-compliant PCI IDE adapter cards.

OffBoard PCI IDE Primary IRQ

This option specifies the PCI interrupt used by the primary IDE channel on the offboard PCI IDE controller. The settings are Disabled, Hardwired, INTA, INTB, INTC, or INTD.

Offboard PCI IDE Secondary IRQ

This option specifies the PCI interrupt used by the secondary IDE channel on the offboard PCI IDE controller. The settings are Disabled, Hardwired, INTA, INTB, INTC, or INTD.

PCI Slot *n* IRQ Priority

These options specify the IRQ priority for PCI devices installed in the PCI devices installed in the PCI expansion slots. The settings are Auto, IRQ 3, 4, 5, 7, 9, 10, and 11, in priority order.

DMA Channel *n*

These options allow you to specify the bus type used by each DMA channel. The settings are PnP or ISA/EISA .

IRQ_{*n*}

These options specify the bus that the specified IRQ line is used on. These options allow you to reserve IRQs for legacy ISA adapter cards. These options determine if AMIBIOS should remove an IRQ from the pool of available IRQs passed to devices that are configurable by the system BIOS. The available IRQ pool is determined by reading the ESCD NVRAM. If more IRQs must be removed from the pool, you can use these options to reserve the IRQ by assigning an ISA/EISA setting to it. Onboard I/O is configured by AMIBIOS. All IRQs used by onboard I/O are configured as PCI/PnP. IRQ12 only appears if the Mouse Support option in Advanced Setup is set to Disabled. IRQ14 and 15 will not be available if the onboard PCI IDE is enabled. If all IRQs are set to ISA/EISA and IRQ14 and 15 are allocated to the onboard PCI IDE, IRQ9 will still be available for PCI and PnP devices, because at least one IRQ must be available for PCI and PnP devices. The settings are ISA/EISA or PCI/PnP.

Reserved Memory Size

This option specifies the size of the memory area reserved for legacy ISA adapter cards. The settings are Disabled, 16K, 32K, or 64K.

Reserved Memory Address

This option specifies the beginning address (in hex) of the reserved memory area. The specified ROM memory area is reserved for use by legacy ISA adapter cards. This option does not appear if the Reserved Memory Size option is set to Disabled. The settings are C0000, C4000, C8000, CC000, D0000, D4000, D8000, or DC000.

PCI Device Search Order

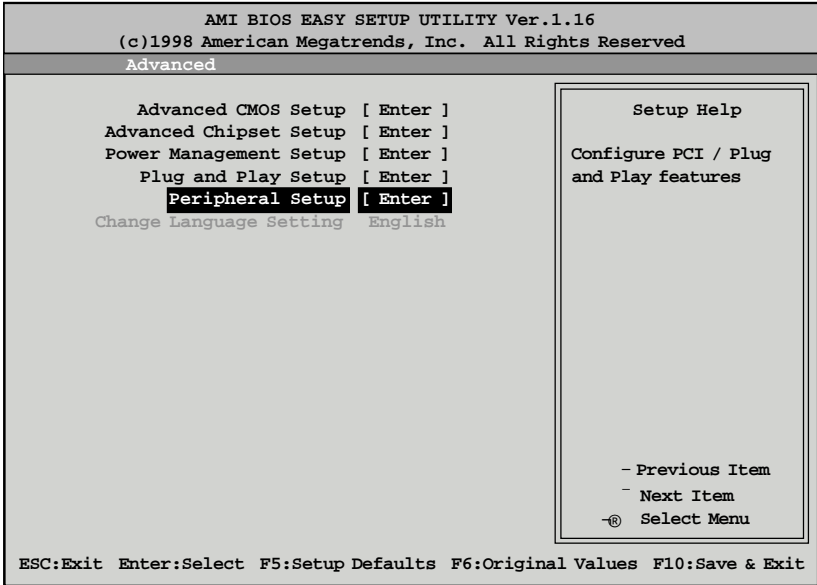
This option changes the BIOS scan order of the PCI slot - from first to last or last to first. The settings are First-Last or Last-First.

BIOS Devnode for Shadow RAM

This option is used for some add-on card ROMs which do not claim the correct memory range that they occupy. The settings are Disabled or Enabled.

Peripheral Setup

Peripheral Setup options are displayed by choosing Peripheral Setup from the AMIBIOS Setup main menu. All Peripheral Setup options are described here.



Peripheral Setup Default Settings Chart

Setting Option	Optimal Default	Fail-Safe Default
Power Interruption	Dis abled	Dis abled
Overdock Warning Mes sage	E nabled	E nabled
LM79 IN0	2.06	2.06
LM79 IN1	1.52	1.52
LM79 IN2	3.36	3.36
LM79 IN3	5.10	5.10
LM79 IN4	11.73	11.73
LM79 IN5	-11.70	-11.70
LM79 IN6	-5.2	-5.2
LM79 F an1	5400	5443
LM79 F an2	N/A	N/A
Onboard FDC	Auto	Auto
Onboard Serial Port 1	3F 8h	3F 8h
Onboard Serial Port 2	2F 8h	2F 8h

Default Settings Chart (Continued)

Setting Option	Optimal Default	Fail-Safe Default
*IR Receiver Pin	IRRX1	IRRX1
Onboard Parallel Port	378	378
Parallel Port Mode	Normal	Normal
*EPP Version	N/A	N/A
Parallel Port IRQ	7	7
*Parallel Port DMA Channel	N/A	N/A
Onboard IDE	Both	Both

* Setting Option is not Selectable

Overclock Warning Message

When enabled, this option sends a warning message if the CPU is overclocked. The settings are Enabled or Disabled.

LM79 IN(X)

This option specifies various CPU core voltage settings.

Power Interruption

The settings are Enabled or Disabled.

Onboard FDC

Set this option to Enabled to enable the floppy drive controller on the motherboard. The settings are Auto, Enabled, or Disabled.

Onboard Serial Port1

This option specifies the base I/O port address of serial port 1. The settings are Auto, Disabled, 3F8h, 2F8h, 3E8h, or 2E8h.

Onboard Serial Port2

This option specifies the base I/O port address of serial port 2. The settings are Auto, Disabled, 3F8h, 2F8h, 3E8h, or 2E8h.

Serial Port2 Mode

This option specifies the operating mode for serial port 2. This option will not appear if the Onboard Serial Port2 option is set to Disabled, or is set to Auto and your system does not have an onboard serial port 2. The settings are Normal, Sharp-IR, IrDA, and Consumer.

chapter 5

System Resources

Beep Codes

Fatal errors, which halt the boot process, are communicated through a series of audible beeps. If AMIBIOS POST can initialize the system video display, it displays the error message. Displayed error messages, in most cases, allow the system to continue to boot. Displayed error messages are described on pages 64-65. See below for the beep code chart.

Beeps	Error Message	Description
1	Refresh Failure	The memory refresh circuitry is faulty.
2	Parity Error	Parity error in the base memory (the first 64 KB block) of memory.
3	Base 64 KB Memory Failure	Memory failure in first 64 KB.
4	Timer Not Operational	A memory failure in the first 64 KB of memory, or Timer 1 is not functioning.
5	Processor Error	The CPU generated an error.
6	8042 - Gate A20 Failure	Cannot switch to protected mode.
7	Processor Exception Interrupt Error	The CPU on the CPU Card generated an exception interrupt.
8	Display Memory Read/Write Error	The system video adapter is either missing or its memory is faulty. This is not a fatal error.
9	ROM Checksum Error	The ROM checksum value does not match the value encoded in AMIBIOS.
10	CMOS Shutdown Register Read/Write Error	The shutdown register for CMOS RAM has failed.
11	Cache Memory Bad — Do Not Enable Cache	The cache memory test failed. Cache memory is disabled. Do not press <Ctrl> <Alt> <Shift> <+> to enable cache memory.

Troubleshooting System Problems

If the computer beeps...	then...
1, 2, or 3 times...	reseat the memory SIMMs or DIMMs. If the system still beeps, replace the memory.
6 times...	reseat the keyboard controller chip. If it still beeps, replace the keyboard controller. If it still beeps, try a different keyboard, or replace the keyboard fuse, if there is one.
8 times...	there is a memory error on the video adapter. Replace the video adapter, or the RAM on the video adapter.
9 times...	the BIOS ROM chip is bad. The system probably needs a new BIOS ROM chip.
11 times...	reseat the cache memory on the motherboard. If it still beeps, replace the cache memory.
4, 5, 7, or 10 times...	the motherboard must be replaced.

Displayed Error Messages

If an error occurs after the system display has been initialized, the error message will be displayed as follows:

```
ERROR Message Line 1  
ERROR Message Line 2  
Press <F1> to continue
```

and the system will halt. The system will not halt if the Wait for <F1> If Any Error option in Advanced Setup is Disabled.

RUN SETUP UTILITY

may also appear. Press <F1> to run WINBIOS Setup if this message appears.

Error Message	Explanation
8042 Gate-A20 Error	Gate A20 on the keyboard controller (8042) is not working. Replace the 8042.
Address Line Short!	Error in the address decoding circuitry.
C: Drive Error	No response from drive C:. Run the AMIDiag Hard Disk Utility. Check the C: hard disk type in Standard Setup.
C: Drive Failure	No response from hard disk drive C:. Replace the drive.
Cache Memory Bad, Do Not Enable Cache!	Cache memory is defective. Run AMIDiag.
CH-2 Timer Error	An AT system has two timers. There is an error in timer 2.
CMOS Battery State Low	CMOS RAM is powered by a battery. The battery power is low. Replace the battery.
CMOS Checksum Failure	CMOS RAM checksum is different than the previous value. Run WINBIOS Setup.
CMOS System Options Not Set	The values stored in CMOS RAM have been destroyed. Run WINBIOS Setup.
CMOS Display Type Mismatch	The video type in CMOS RAM does not match the type detected. Run WINBIOS Setup.
CMOS Memory Size Mismatch	The amount of memory found by AMIBIOS is different than the amount in CMOS RAM. Run WINBIOS Setup.
CMOS Time and Date Not Set	Run Standard Setup to set the date and time.
D: Drive Error	No response from drive D:. Run the AMIDiag Hard Disk Utility. Check the hard disk type in Standard Setup.

Error Message	Explanation
D: drive failure	No response from hard disk drive D:. Replace the drive.
Diskette Boot Failure	The boot diskette in drive A: cannot be used to boot the system. Use another boot diskette and follow the screen instructions.
Display Switch Not Proper	Some systems require a video switch be set to either color or monochrome. Turn the system off, set the switch properly, then power on.
DMA Error	Error in the DMA controller.
DMA 1 Error	Error in the first DMA channel.
DMA 2 Error	Error in the second DMA channel.
FDD Controller Failure	AMIBIOS cannot communicate with the floppy disk drive controller. Check all appropriate connections after the system is powered down.
HDD Controller Failure	AMIBIOS cannot communicate with the hard disk drive controller. Check all appropriate connections after the system is powered down.
INTR1 Error	Interrupt channel 1 failed POST.
INTR2 Error	Interrupt channel 2 failed POST.
Invalid Boot Diskette	AMIBIOS can read the diskette in floppy drive A:, but it cannot boot the system with it. Use another boot diskette and follow the screen instructions.
Keyboard Is Locked...Unlock It	The keyboard lock on the system is engaged. The system must be unlocked to continue to boot.
Keyboard Error	The keyboard has a timing problem. Make sure a Keyboard Controller AMIBIOS is installed. Set Keyboard in Advanced Setup to Not Installed to skip the keyboard POST routines.
KB/Interface Error	There is an error in the keyboard connector.
No ROM BASIC	Cannot find a proper bootable sector on either drive A: or C:. AMIBIOS cannot find ROM Basic.
Off Board Parity Error	Parity error in memory installed on an adapter card in an expansion slot. The format is: OFF BOARD PARITY ERROR ADDR = (XXXX) XXXX is the hex address where the error occurred. Run AMIDiag to find and correct memory problems.
On Board Parity Error	Parity error in motherboard memory. The format is: ON BOARD PARITY ERROR ADDR = (XXXX) XXXX is the hex address where the error occurred. Run AMIDiag to find and correct memory problems.
Parity Error ????	Parity error in system memory at an unknown address. Run AMIDiag to find and correct memory problems.

Glossary

ACPI (Advanced Configuration and Power Interface) is a power management specification that allows the operating system to control the amount of power distributed to the computer's devices. Devices not in use can be turned off, reducing unnecessary power expenditure.

AGP (Accelerated Graphics Port) is a PCI-based interface which was designed specifically for demands of 3D graphics applications. The 32-bit AGP channel directly links the graphics controller to the main memory. While the channel runs at only 66MHz, it supports data transmission during both the rising and falling ends of the clock cycle, yielding an effective speed of 133MHz.

The **AT** was the original form factor of IBM's PC.

ATAPI (AT Attachment Packet Interface), also known as IDE or ATA, is a drive implementation that includes the disk controller on the device itself. It allows CD-ROMs and tape drives to be configured as master or slave devices, just like hard drives.

The **ATX** form factor was designed to replace the AT form factor. It improves on the AT design by rotating the board ninety degrees, so that the IDE connectors are closer to the drive bays, and the CPU is closer to the power supply and cooling fan. The keyboard, mouse, serial, USB, and parallel ports are built in.

Bandwidth refers to carrying capacity. The greater the bandwidth, the more data the bus, phone line, or other electrical path, can carry. Greater bandwidth, then, also results in greater speed.

A **BBS** (Bulletin Board System) is a computer system with a number of modems hooked up to it which acts as a center for users to post messages and access information.

The **BIOS** (Basic Input/Output System) program resides in the ROM chip, and provides the basic instructions for controlling your computer's hardware. Both the operating system and application software use BIOS routines to ensure compatibility.

A **buffer** is a portion of RAM which is used to temporarily store data, usually from an application, though it is also used when printing, and in most keyboard drivers. The CPU can manipulate data in a buffer before copying it, all at once, to a disk drive. While this improves system performance--reading to or writing from a disk drive a single time is much faster than doing so repeatedly--there is the possibility of losing your data should the system crash. Information stored in a buffer is temporarily stored, not permanently saved.

A **bus** is a data pathway. The term is used especially to refer to the connection between the processor and system memory, and between the processor and PCI or ISA local buses.

Bus mastering allows peripheral devices and IDEs to access the system memory without going through the CPU (similar to DMA channels).

A **cache** is a temporary storage area for data that will be needed often by an application. Using a cache lowers data access times, since the needed information is stored in the SRAM instead of in the slower DRAM. Note that the cache is also much smaller than your regular memory: a typical cache size is 512KB, while you may have as much as 1GB of regular memory.

Cache size refers to the physical size of the cache onboard. This should not be confused with the cacheable area, which is the total amount of memory which can be scanned by the system in search of data to put into the cache. A typical setup would be a cache size of 512KB, and a cacheable area of 512MB. In this case, up to 512MB of the main memory onboard is capable of being cached. However, only 512KB of this memory will be in the cache at any given moment. Any main memory above 512MB could never be cached.

Closed and open jumpers Jumpers and jumper pins are active when they are On or Closed, and inactive when they are Off or Open.

CMOS Complementary Metal-Oxide Semiconductors are chips that hold the basic start-up information for the BIOS.

The **COM port** is another name for the serial port, which is so-called because it transmits the eight bits of a byte of data along one wire, and receives data on another single wire (that is, the data is transmitted in serial form, one bit after another). Parallel ports transmit the bits of a byte on eight

different wires at the same time (that is, in parallel form, eight bits at the same time).

DIMM **D**ual **I**n-line **M**emory **M**odules are a faster and more capacious form of RAM than SIMMs, and do not need to be installed in pairs.

DIMM bank DIMM banks are sometimes called DIMM sockets, because the physical slot and the logical unit are the same. That is, one DIMM module fits into one DIMM socket, which is capable of acting as a memory bank.

DMA **D**irect **M**emory **A**ccess channels are similar to IRQs. DMA channels allow hardware devices (like sound cards or keyboards) to access the main memory without involving the CPU. This frees up CPU resources for other tasks. As with IRQs, it is vital that you do not double up devices on a single line. Plug and Play devices will take care of this for you.

In **Doze mode**, only the CPU's speed is slowed.

DRAM **D**ynamic **R**AM is a widely available, very affordable form of RAM which has the unfortunate tendency to lose data if it is not recharged regularly (every few milliseconds). This refresh requirement makes DRAM slower three to ten times slower than non-recharged RAM such as SRAM.

EDO RAM (**E**xtended **D**ata-**O**ut **R**AM) speeds access to memory locations by assuming that memory addresses are static: the next time it looks for a bit of data, it will be at the same spot, or one nearby.

EEPROM Electrically Erasable Programmable ROM, also called Flash BIOS, is a ROM chip which can, unlike normal ROM, be updated. This allows you to keep up with changes in the BIOS programs without having to buy a new chip. TYAN's BIOS updates can be found at <http://www.tyan.com/html/drivers.html>

ESCD (**E**xtended **S**ystem **C**onfiguration **D**ata) is a format for storing information about Plug and Play devices in the system BIOS. This information helps properly configure the system each time it boots.

Firmware is low level software that controls the system hardware.

Form factor is an industry term for the size, shape, power supply type, and external connector type of the PCB (personal computer board) or motherboard. The standard form factors are the AT and ATX, although TYAN also makes some Baby-AT boards.

A **Global timer** is an onboard hardware timer, such as the Real Time Clock.

Handshaking is a form of encryption. One system, typically the server, sends an encryption scheme to another agent, typically a client. Thus, the client's data is protected during transmittal to the server.

HDD stands for **Hard Disk Drive**.

H-SYNC controls the horizontal properties of the monitor.

IC (**Integrated Circuit**) is the formal name for the computer chip.

IDE **Integrated Device** (or **Drive**) **Electronics** is a simple, self-contained hard drive interface. It can handle drives up to 8.4GB in size. Almost all IDEs sold now are in fact Enhanced IDEs (EIDEs).

IDE INT (**IDE Interrupt**) is a hardware interrupt signal that goes to the IDE.

I/O **Input/Output** is the connection between your computer and another piece of hardware (mouse, keyboard, etc.).

IRQ An **Interrupt Request** is an electronic request that runs from a hardware device to the CPU. The interrupt controller assigns priorities to incoming requests and delivers them to the CPU. It is important that there is only one device hooked up to each IRQ line; doubling up devices on IRQ lines can lock up your system. Happily, Plug and Play operating systems take care of these details for you.

ISA stands for **Industry Standard Architecture**. ISA is a slower 8- or 16-bit BUS (data pathway).

Latency is the amount of time that one part of a system spends waiting for another part to catch up. This is most common when the system sends data out to a peripheral device, and is waiting for the peripheral to send some data back (peripherals tend to be slower than onboard system components).

NVRAM ROM and EEPROM are both examples of **Non-Volatile RAM**, memory that holds its data without power. DRAM, in contrast, is volatile.

OEMs (Original Equipment Manufacturers) like Compaq or IBM package other companies' motherboards and hardware inside their case and sell them.

The **parallel port** transmits the bits of a byte on eight different wires at the same time (that is, in parallel form, eight bits at the same time).

PCI stands for **Peripheral Component Interconnect**. PCI is a 32-bit local bus (data pathway) which is faster than the ISA bus. Local buses are those which operate within a single system (as opposed to a network bus, which connects multiple systems).

The **PCI PIO (PCI Programmable Input/Output)** modes are the data transfer modes used by IDE drives. These modes use the CPU for data transfer (DMA channels do not). PCI refers to the type of bus used by these modes to communicate with the CPU.

PCI-to-PCI bridge allows you to connect multiple PCI devices onto one PCI slot.

Pipeline burst SRAM is a fast secondary cache. It is used as a secondary cache because SRAM is slower than SDRAM, but usually larger. Data is cached first to the faster primary cache, and then, when the primary cache is full, to the slower secondary cache.

Pipelining improves system performance by allowing the CPU to begin executing a second instruction before the first is completed. A pipeline can be likened to an assembly line, with a given part of the pipeline repeatedly executing a set part of an operation on a series of instructions.

PM timers (Power Management timers) are software timers that count

down the number of seconds or minutes until the system times out and enters sleep, suspend, or doze mode.

PnP is an acronym for Plug and Play, a design standard that has become ascendant in the industry. Plug and Play devices require little set-up to use. Novice end users can simply plug them into a computer that is running on a Plug and Play-aware operating system (such as Windows 95), and go to work. Devices and operating systems that are not Plug and Play require you to reconfigure your system each time you add or change any part of your hardware.

The term **RAM** (**R**andom **A**ccess **M**emory), while technically referring to a type of memory where any byte can be accessed without touching the adjacent data, is often used to refer to the system's main memory. This memory is available to any program running on the computer.

ROM (**R**ead-**O**nly **M**emory) is a storage chip which contains the BIOS (Basic Input/Output System), the basic instructions required to boot the computer and start up the operating system.

SDRAM (**S**ynchronous **D**ynamic **R**AM) is so-called because it can keep two sets of memory addresses open simultaneously. By transferring data alternately from one set of addresses, and then the other, SDRAM cuts down on the delays associated with non-synchronous RAM, which must close one address bank before opening the next.

The **serial port** is so called because it transmits the eight bits of a byte of data along one wire, and receives data on another single wire (that is, the data is transmitted in serial form, one bit after another).

SIMM **S**ingle **I**n-line **M**emory **M**odules are the most common form of RAM. They must be installed in pairs, and do not have the carrying capacity or the speed of DIMMs.

SIMM bank/socket SIMM sockets are the physical slots into which you stick SIMM modules. A pair of SIMM sockets form a SIMM bank, and act as a unit. If only one socket is filled, the bank will not operate.

In **Sleep/Suspend mode**, all devices except the CPU shut down.

SRAM Static **RAM**, unlike DRAM, does not need to be refreshed in order to prevent data loss. Thus, it is faster, and more expensive.

In **Standby mode**, the video and fixed disk drive shut down; all other devices operate normally.

UltraDMA/33 is a fast version of the old DMA channel. UltraDMA is also called UltraATA. Without UltraDMA your system cannot take advantage of the higher data transmission rates of the new UltraATA hard drives.

Universal Serial Bus or USB, is a versatile port. This one port type can function as a serial, parallel, mouse, keyboard, or joystick port. It is fast enough to support video transfer, and is capable of supporting up to 127 daisy-chained peripheral devices.

VGA (Video Graphics Array) is the PC video display standard.

V-SYNC controls the vertical properties of the monitor.

ZIF socket Zero Insertion Force sockets make it possible to insert CPUs without damaging the sensitive pins. The CPU is lightly placed in an open ZIF socket, and the metal lever pulled down. This shifts the processor over and down, guiding it into place on the board.

Notice for the USA

Compliance Information Statement (Declaration of Conformity Procedure) DoC FCC Part 15: This Device complies with Part 15 of the FCC Rules.

Operation is subject to the following conditions:

1) this device may not cause harmful interference, and
2) this device must accept any interference received including interference that may cause undesired operation. If this equipment does cause harmful interference to radio or television reception, which can be determined by turning the equipment off and on, the user is encouraged to try one or more of the following measures:

- Reorient or relocate the receiving antenna.
- Increase the separation between the equipment and receiver.
- Plug the equipment into an outlet on a circuit different from that of the receiver.
- Consult the dealer or an experienced radio/television technician for help.

Notice for Canada

This apparatus complies with the Class B limits for radio interference as specified in the Canadian Department of Communications Radio Interference Regulations. (Cet appareil est conforme aux normes de Classe B d'interférence radio tel que spécifié par le Ministère Canadien des Communications dans les règlements d'interférence radio.)

Notice for Europe (CE Mark)

This product is in conformity with the Council Directive 89/336/EEC, 92/31/EEC (EMC).

CAUTION: LITHIUM BATTERIES included with this board. Danger of explosion if battery is incorrectly replaced. Replace only with the same or equivalent type recommended by manufacturer. Dispose of used batteries according to manufacturer instructions.