

# COMPAQ DESKPRO 486/25



**COMPAQ**

It simply works better.

# The ultimate desktop persona

Compaq, the leader in high-performance personal computing, introduces the world to a new generation of speed and performance in a desktop: the COMPAQ DESKPRO 486/25 Personal Computer.

Compaq designed it from the ground up to unleash the power of the evolutionary new 486 microprocessor. Virtually every component and subsystem has been optimized to capitalize on the enhanced performance of this microprocessor—from its advanced processing system, to its high-performance storage options and high-speed Extended Industry Standard Architecture (Extended ISA or EISA) expansion bus. Moreover, all these enhancements maintain full compatibility with industry-standard hardware and software.

Together, these enhancements deliver performance that's *up to three times faster* than 25-MHz 386-based PCs. Performance that's rated at 15 VAX MIPS, outpacing many technical workstations.

## Desktop performance like never before

Speed and power as you've never known it. That's what you'll find in the new COMPAQ DESKPRO 486/25.

At the heart of the system is the 25-MHz 486 microprocessor. Its design combines three advanced 32-bit processing components onto one powerful device. It includes the processor itself. An integrated numeric coprocessor to speed numeric calculations. And an 8-Kbyte cache to reduce wait states.

To boost performance further, Compaq added a second-level cache memory controller with 128 Kbytes of high-speed static RAM. Combined with interleaved memory architecture, it ensures the fastest possible microprocessor-to-memory transfer rate. Performance in calculation-intensive applications can be increased even further with an optional Weitek 4167 coprocessor.

The 486 microprocessor works in concert with the exclusive COMPAQ Flexible Advanced Systems

Architecture. Flex Architecture integrates a separate memory bus with the powerful EISA expansion bus. This combination reduces processing time, while maintaining compatibility with 8-, 16- and powerful new 32-bit expansion boards. By separating memory and I/O buses, Flex Architecture enables every subsystem to work at its optimal speed. So nothing slows you down.

In fact, the COMPAQ DESKPRO 486/25 gets you off to a flying start with four megabytes of RAM that's standard on every model. So you can run your applications under MS OS/2 Version 1.2, MS-DOS, or under the UNIX operating system.

## The power of compatibility

Our mission to provide users with powerful, high-quality personal computers is well known. But we're equally committed to working within the industry standard.

The COMPAQ DESKPRO 486/25 brings new power to literally tens of thousands of business productivity and technical application programs—the largest library of software programs in the world. So you can do everything from word processing to photorealistic imaging to networking.

Its powerful EISA expansion bus represents an open 32-bit extension to the industry-standard 8-/16-bit bus design. So you have complete compatibility with the wide selection of 8- and 16-bit expansion boards, including the ones you already use. Moreover, you can take advantage of the increased performance offered by new 32-bit expansion boards. EISA means an open future that enables the best 8-, 16- and 32-bit technology of today and tomorrow to work in concert—protecting your investment from obsolescence as your systems grow.

This high level of compatibility lets you work with the broad array of peripherals your job may demand, giving you the freedom to customize the system to your exact needs.

# computer.

## Accelerated applications

If you need unparalleled performance from your PC and the flexibility to handle the most demanding applications and environments, the COMPAQ DESKPRO 486/25 delivers like no other.

It's perfect for CAD/CAM/CAE, statistical analysis and general scientific applications, coupling the power of a workstation with the flexibility of a PC.

In the UNIX desktop environment, it easily handles multitasking, switching between applications and intensive use of single applications in a stand-alone or connected environment.

In the business world, it delivers extra performance for portfolio modeling, cost analysis, project management, forecasting, lease revenue scenarios and other compute-intensive applications.

And in networked or multiuser environments, the COMPAQ DESKPRO 486/25 provides the performance and expandability for use as a database engine, a file server or a host. So you can put its power to work for a whole group of people.

## Massive expandability

The capability to tackle this wide range of demanding applications is built into the new COMPAQ DESKPRO 486/25.

Inside, you'll find eight expansion slots. A separate high-speed 32-bit slot lets you expand memory internally to 100 megabytes. And up to seven EISA slots let you work with thousands of expansion boards.

You'll also find the flexibility to use up to seven internal storage devices. For maximum drive performance, you can choose high-speed 650- and 320-MB Fixed Disk Drives with 1:1 interleave and ESDI controllers, along with fast 210- and 120-MB Fixed Disk Drives. You can also use both 5<sup>1</sup>/<sub>4</sub>-inch and 3<sup>1</sup>/<sub>2</sub>-inch diskette drives.

Storage performance is taken to a new level through innovative drive array technology. This

option configures two 210-Megabyte Fixed Disk Drives in a 420-megabyte "drive array" that's addressed as a single unit. The optional COMPAQ 32-Bit Intelligent Drive Array Controller manages the array, improving performance in network server and multiuser environments.

All this gives you an internal storage of 1.3 gigabytes. So you can sort massive database files from a mainframe or minicomputer. If you need more, the Fixed Disk Expansion Unit stores another 1.3 gigabytes, for a total of 2.6 gigabytes.

Accelerated VGA graphics are integrated on the system board, keeping expansion slots free for other uses. And standard interfaces make it easy to connect a printer, plotter, pointing device and other tools.

The standard COMPAQ Expanded Memory Manager supports the Lotus/Intel/Microsoft Expanded Memory Specification Standard Version 4.0, permitting memory access beyond 640K when working in MS-DOS. This lets you efficiently manipulate large amounts of data without additional hardware.

For data protection, you can choose tape drives with the capacity for fast, easy backup. Even the optional 420-Megabyte Two-Drive Array offers a high-speed system for data protection.

## A tradition of innovation

With the introduction of the COMPAQ DESKPRO 486/25, Compaq again extends the performance and capabilities of desktop personal computing. Like other COMPAQ personal computers, the COMPAQ DESKPRO 486/25 offers a powerful and innovative solution to the performance needs of the user. No matter what the application or environment.

The COMPAQ DESKPRO 486/25 is supported not only by a tradition of technological innovation. It's also supported by a worldwide network of Authorized COMPAQ Computer Dealers who can customize a solution to your needs.

## Standard Configurations

**Model 650:** 4 megabytes of system memory; one 1.2-Megabyte 5<sup>1</sup>/<sub>4</sub>-inch Diskette Drive; one Full-Height 650-Megabyte Fixed Disk Drive; 15-MHz ESDI controller; and six 8-/16-/32-bit EISA expansion slots available.

---

**Model 320:** 4 megabytes of system memory; one 1.2-Megabyte 5<sup>1</sup>/<sub>4</sub>-inch Diskette Drive; one Half-Height 320-Megabyte Fixed Disk Drive; 15-MHz ESDI controller; and six 8-/16-/32-bit EISA expansion slots available.

---

**Model 120:** 4 megabytes of system memory; one 1.2-Megabyte 5<sup>1</sup>/<sub>4</sub>-inch Diskette Drive; one Half-Height 120-Megabyte Fixed Disk Drive; and seven 8-/16-/32-Bit EISA expansion slots available.

---

## Specifications

**Processor:** 32-bit 25-MHz 486 microprocessor with integrated numeric coprocessor and integrated cache memory controller with 8 Kbytes of high-speed static RAM, second-level cache memory controller with 128 Kbytes of high-speed static RAM.

---

**Compatibility:** Runs thousands of popular software packages and hardware products designed for industry-standard personal computers.

---

**Memory:** 4 megabytes of 32-bit high-speed RAM standard (paged and interleaved), expandable to 100 megabytes without taking an additional expansion slot.

---

**Expansion Slots:** Total of eight expansion slots: one high-speed 32-bit memory slot; seven 8-/16-/32-bit EISA slots compatible with industry-standard expansion boards.

---

**Storage Devices:** 5<sup>1</sup>/<sub>4</sub>-inch 1.2-Megabyte Diskette Drive (one standard, second optional); 5<sup>1</sup>/<sub>4</sub>-inch 360-Kbyte Diskette Drive (optional); 3<sup>1</sup>/<sub>2</sub>-inch 1.44-Megabyte Diskette Drive (optional). The following Fixed Disk Drives all feature 1:1 interleave: 650-Megabyte (standard and optional) Fixed Disk Drive (average access time less than 18 ms); 320-Megabyte (standard and optional) Fixed Disk Drive (average access time less than 18 ms); 210-Megabyte (optional) Fixed Disk Drive (average access time less than 19 ms); 120-Megabyte (standard and optional) Fixed Disk Drive (average access time less than 19 ms). Other options include 320-/525-Megabyte Tape Drive, 150-/250-Megabyte Tape Drive and Fixed Disk Expansion Unit (Model 650 and Model 300).

---

**Standard Interfaces:** Integrated Accelerated Video Graphics Controller, Pointing Device (mouse) Interface, Parallel Printer Interface and High-Speed Asynchronous (serial) Communications Interface.

---

**Keyboard:** COMPAQ Enhanced Keyboard.

---

**Display Options:** 16-inch (40.6 cm) Advanced Graphics Color Monitor; 14-inch (35.6 cm) COMPAQ Video Graphics Color Monitor; 12-inch (30.5 cm) COMPAQ Video Graphics Monochrome Monitor.

---

**Display Controller Options:** Advanced Graphics 1024 Board; Advanced Graphics 1024 Memory Board.

---

**Memory Options:** 2-Megabyte Single-Socket Memory Module; 8-Megabyte Single-Socket Memory Module; 8-Megabyte Dual-Socket Memory Module; 32-Megabyte Dual-Socket Memory Module.

---

**Security:** External keylock, power-on password, keyboard password and network server mode prevent unauthorized access.

---

**Other Options:** 15-MHz ESDI controller; COMPAQ 32-Bit Intelligent Drive Array Controller; 525-Megabyte, 320-Megabyte, 250-Megabyte, 150-Megabyte tape cartridges; COMPAQ 2400-Baud Internal Modem (U.S. and Canada); Asynchronous Communications/Parallel Printer Board; MS-DOS Version 4, MS-DOS Version 3 and MS OS/2 Standard Version 1.2; COMPAQ DESKPRO 486/25 Technical Reference Guide, Advanced Graphics System Technical Reference Guide.

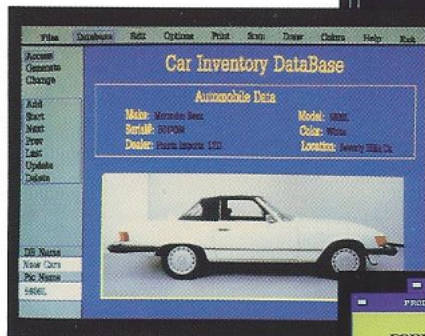
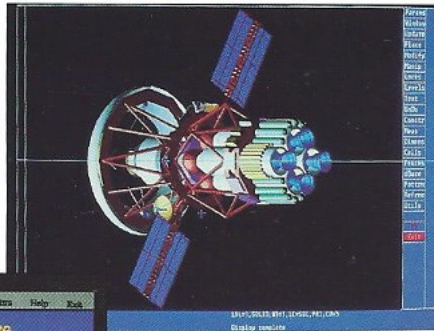
---

**Warranty:** One-year limited warranty.

---

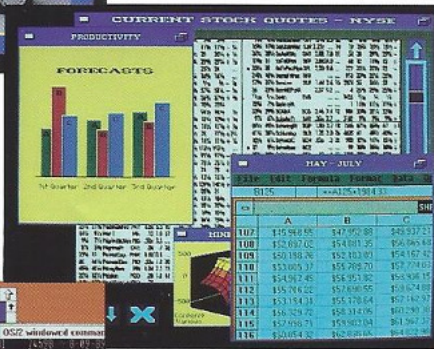
**Physical Specifications:** System unit—19.2" W×6.5" H×17.7" D (48.8 cm W×16.6 cm H×45.0 cm D); Keyboard—18.5" W×1.7" H×7.0" D (47.0 cm W×4.3 cm H×17.8 cm D).

The COMPAQ DESKPRO 486/25 gives you a new level of performance from leading CAD/CAE applications.



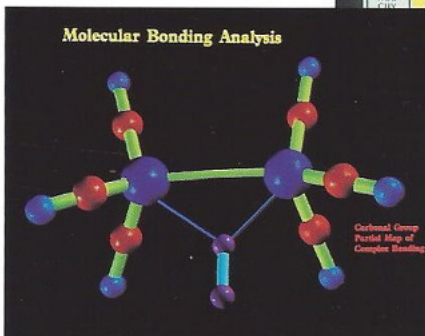
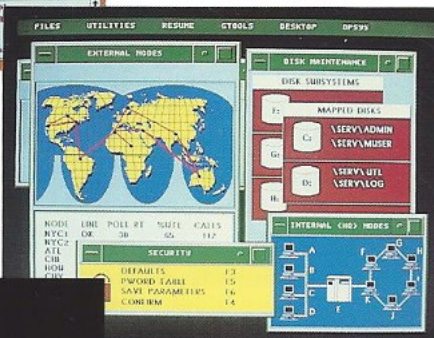
You can handle complex image processing like this database.

The COMPAQ DESKPRO 486/25 lets you fly through complex financial models, cost scenarios and other specialized business applications.



You can work with multitasking operating systems to easily juggle your workload.

The COMPAQ DESKPRO 486/25 delivers the performance and expandability to act as a powerful network server or multiuser host.



You'll have the power to work with demanding scientific and research analyses.

# COMPAQ DESKPRO 486/25

Accelerated VGA graphics with VGA passthrough are integrated on the system board, keeping your slots free for other uses.

There are eight expansion slots. A high-speed 32-bit slot enables you to expand memory up to 100 megabytes. Up to seven EISA slots work with thousands of 8-, 16- and 32-bit expansion boards, giving you room to grow.



Exclusive COMPAQ Flexible Advanced Systems Architecture permits the highest possible performance from the 32-bit processing system while maintaining maximum compatibility with industry-standard peripherals.

To boost performance further, Compaq added a second-level cache memory controller with 128 Kbytes of high-speed static RAM. This processing combination delivers performance that's up to three times faster than 25-MHz 386-based PCs, surpassing many technical workstations.

The COMPAQ DESKPRO 486/25 is powered by the new 486 processor system that employs an integrated numeric coprocessor and an 8-Kbyte cache.

Room for seven mass storage devices allows for maximum configuration flexibility.